



Meadowvale, Norwich - NR5 0NJ



Meadowvale

Norwich

Positioned in a QUIET CUL-DE-SAC, this well presented SEMI-DETACHED HOUSE offers a perfect opportunity to IMPROVE/ REMODEL and MAKE YOUR OWN. Comprising a PRACTICAL LAYOUT, opening to a welcoming HALLWAY ENTRANCE with stairs rising to the first floor and a conveniently located two-piece W.C. THREE RECEPTION ROOMS are offered on the ground floor, including a spacious SITTING ROOM with an exposed brick FEATURE FIREPLACE. Moving through, the fully fitted KITCHEN offers high specification 'Neff' INTEGRATED APPLIANCES and ample storage space, flowing into the separate DINING ROOM and continuing to the CONSERVATORY. Heading upstairs, THREE BEDROOMS open from the landing, serviced by a three-piece FAMILY BATHROOM. Outside, the low maintenance frontage offers DRIVEWAY PARKING, leading to a CARPORT and beyond to the GARAGE. The REAR GARDEN is PRIVATE and FULLY ENCLOSED offering a low maintenance and garage access.



Council Tax band: C

Tenure: Freehold

EPC Energy Efficiency Rating: TBC

- Semi-Detached House
- Sitting Room, Dining Room & Conservatory
- Fully Fitted Kitchen with Integrated Appliances
- Ground Floor W.C & Family Shower Room
- Three Bedrooms
- Quiet Cul-De-Sac Setting
- Driveway Parking, Carport & Garage
- Low Maintenance Private & Enclosed Rear Garden

Located on the outskirts of the City of Norwich, a variety of local amenities are within walking distance including pubs, restaurants, school, local takeaways, and doctors. You also have the Longwater Retail Park just a 10 minute drive away, offering a full range of retail outlets. Transport links into Norwich are excellent, with regular buses, and access can be gained to the A47 providing access to the A11.



SETTING THE SCENE

The property can be found set back from the road, opening to a brick wall enclosed low maintenance frontage including a shingle garden with a generous brick weave driveway adjacent, leading to the covered carport and garage. The main entrance can be found at the front of the property under an open porch.

THE GRAND TOUR

Stepping inside, the welcoming hallway entrance offers hard flooring underfoot for ease of maintenance with stairs rising to the first floor and useful storage for outdoor wear beneath. Further, a convenient two piece W.C can be found. To the right from the hall, the sitting room offers fitted carpeted flooring and a front facing aspect. The room is centred around an exposed brick feature fireplace allowing for a range of soft furnishing layouts. At the end of the hallway, the fully fitted kitchen offers a range of wall and base storage cupboards and ample worktop space for food preparation. Integrated appliances also feature including a 'Neff' oven, inset four ring electric hob and extractor above as well as a dishwasher. An open archway flows through to the dining room with fitted storage to one side, ample room is available for formal dining with continued hard flooring underfoot and a French door leading into the conservatory. uPVC double glazed windows and French doors flood the space with natural light and views look out to the garden.

Ascending the stairs to the carpeted first floor landing, loft access can be found above whilst an integrated airing cupboard provides useful storage space. Doors open to three bedrooms, the main bedroom enjoys views over the garden with uPVC double glazed windows, radiators and carpeted flooring whilst ample room can be found for storage furniture. The second bedroom enjoys the same benefits and includes large fitted wardrobes. The third room offers space for a single bed benefiting from double integrated storage space and is currently used as a study/studio. Completing accommodation, the three piece family shower room offers an inset shower cubicle with glass doors in addition to a wall mounted heated towel rail and wall and base vanity storage cupboards.

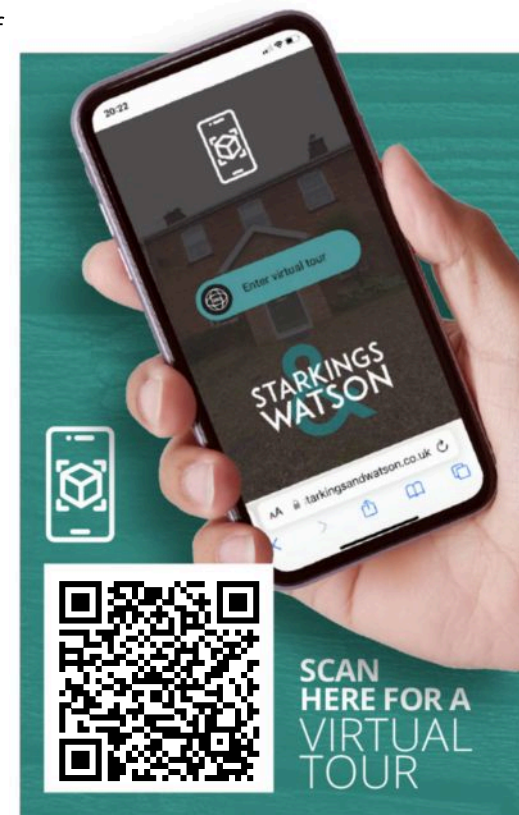
FIND US

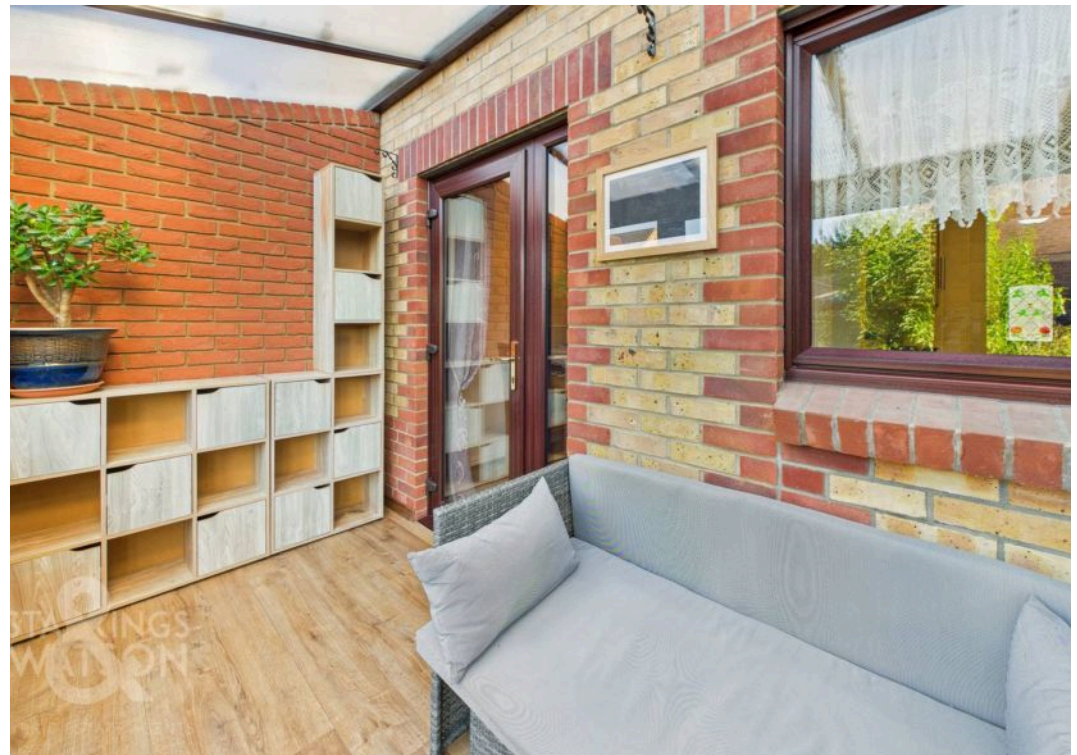
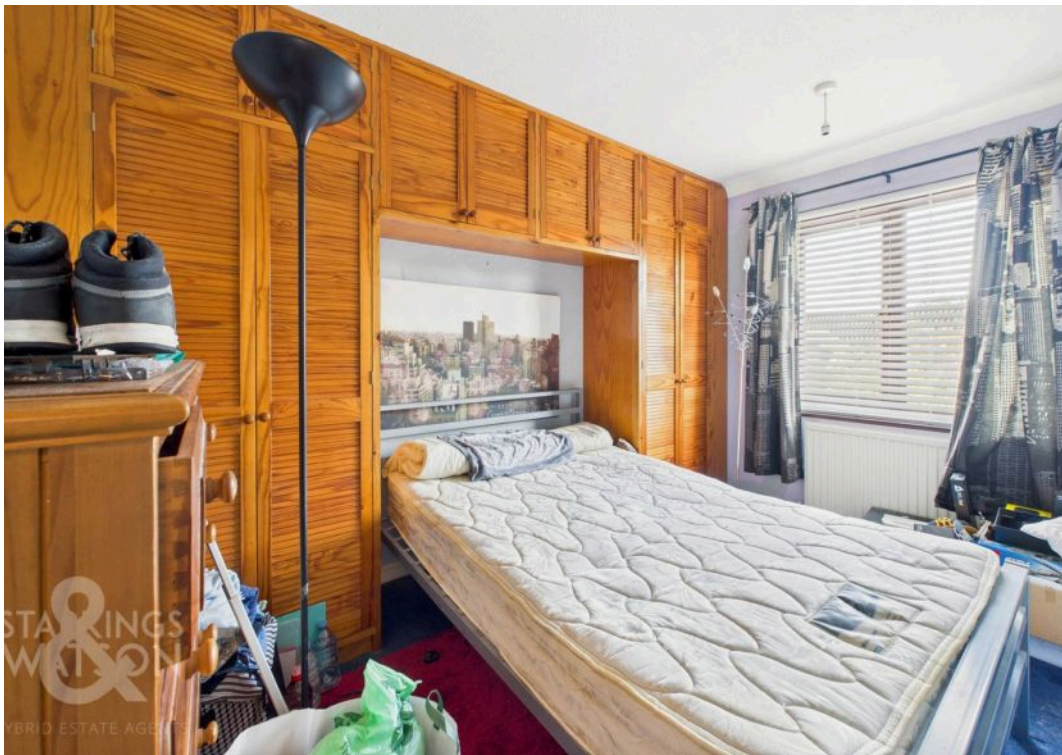
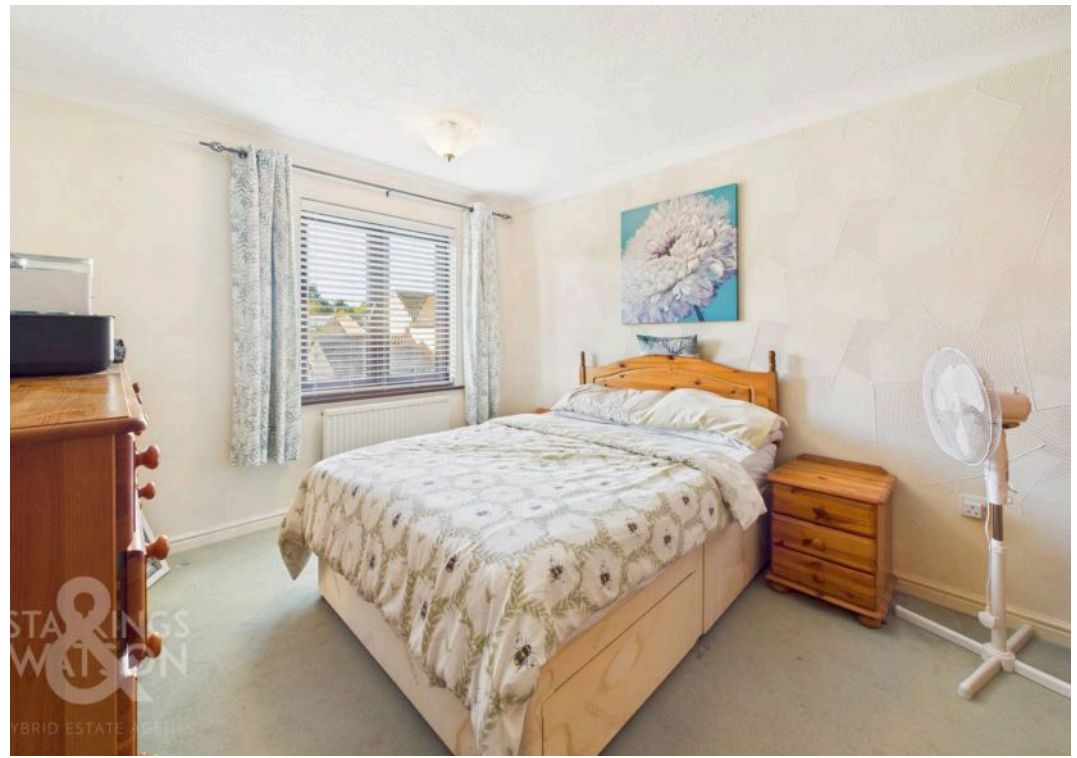
Postcode : NR5 0NJ

What3Words : ///cheat.acid.wedge

VIRTUAL TOUR

View our virtual tour for a full 360 degree of the interior of the property.







THE GREAT OUTDOORS

Heading outside, the low maintenance rear garden is private and fully enclosed with timber panel fencing, predominantly laid to a flagstone patio with raised brick enclosed flower beds home to a range of shrubs. Rear pedestrian access can be found to the garage whilst a storage shed can be found to the left hand side.





Approximate total area⁽¹⁾

933 ft²
86.8 m²

Reduced headroom

12 ft²
1.1 m²

(1) Excluding balconies and terraces

Reduced headroom

----- Below 5 ft/1.5 m

Calculations reference the RICS IPMS 3C standard. Measurements are approximate and not to scale. This floor plan is intended for illustration only.

GIRAFFE 360



Starkings & Watson Hybrid Estate Agents

196 Norwich Road, Costessey - NR5 0EX

01603 336446 • costessey@starkingsandwatson.co.uk • starkingsandwatson.co.uk/

Disclaimer: Whilst every care has been taken to prepare these sales particulars, they are for guidance purposes only. All measurements are approximate and are for general guidance purposes only and whilst every care has been taken to ensure their accuracy, they should not be relied upon and potential buyers are advised to recheck the measurements.