



Raf Lakenheath, Brandon, IP27 9RJ

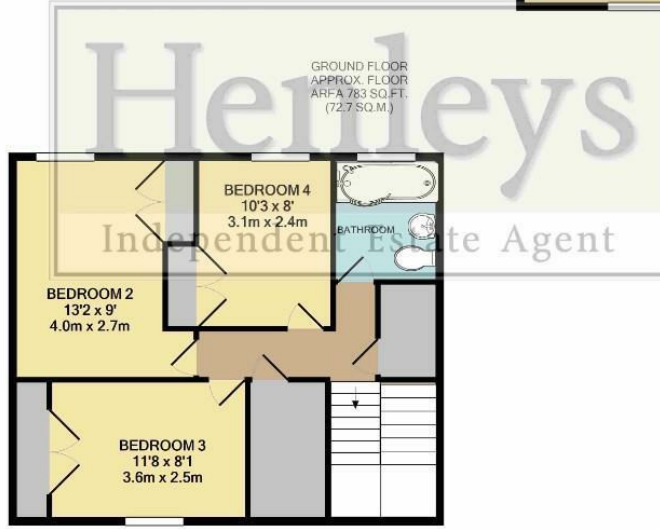
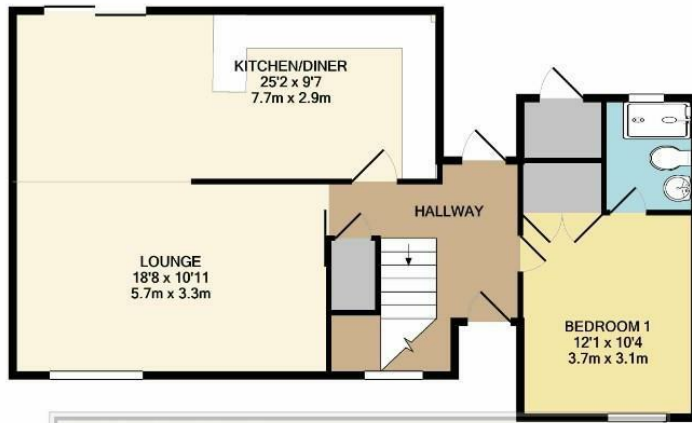
Rent - £1,750 PCM Deposit - £1,788

Located on the popular estate of Lords walk, only a stones throw away from RAF Lakenheath & a short drive to RAF Mildenhall. The property benefits from a open plan kitchen/diner lounge area, bedroom with en-suite, three further bedrooms, family bathroom and office/walk in closest.

- LINK DETACHED HOUSE
- FOUR BEDROOMS
- APPROXIMATE SIZE - 1324SQFT
- COUNCIL TAX BAND - C
- AVAILABLE BEGINNING OF JULY
- CLOSE TO RAF BASES
- ELECTRIC HEATING & ENERGY RATING - C
- FAMILY BATHROOM & ENSUITE
- OFF ROAD PARKING



Council Tax Band: C - EPC Rating: C 70



1ST FLOOR
APPROX. FLOOR
AREA 541 SQ. FT.
(50.2 SQ.M.)

TOTAL APPROX. FLOOR AREA 1324 SQ. FT. (123.0 SQ.M.)
Whilst every attempt has been made to ensure the accuracy of the floor plan contained here, measurements of doors, windows, rooms and any other items are approximate and no responsibility is taken for any error, omission, or mis-statement. This plan is for illustrative purposes only and should be used as such by any prospective purchaser. The services, systems and appliances shown have not been tested and no guarantee as to their operability or efficiency can be given.
Made with Metropix ©2021

