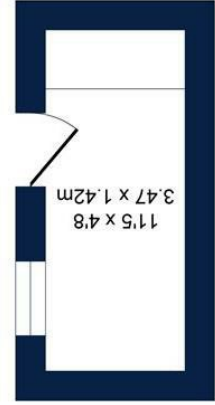




Outbuilding
Approx. Floor
Area 53 Sq.Ft
(4.9 Sq.M.)



Ground Floor
Approx. Floor
Area 383 Sq.Ft
(35.6 Sq.M.)



First Floor
Approx. Floor
Area 383 Sq.Ft
(35.6 Sq.M.)



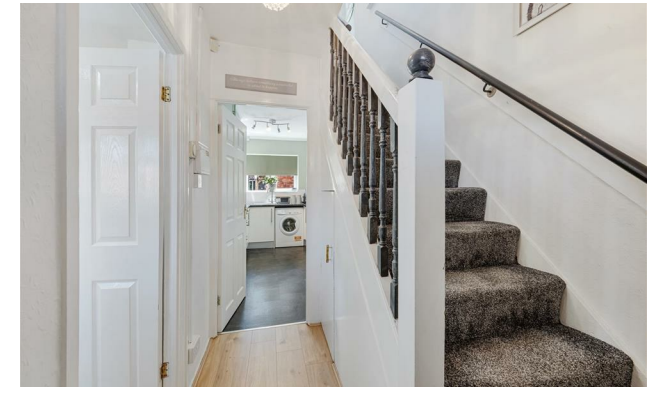
Surveyed and drawn by Lens Media for illustrative purposes only. Not to scale. Whilst every attempt was made to ensure the accuracy of the floor plan, all measurements are approximate and no responsibility is taken for any error.

7, Robins Way, Bowdon
Total Approx. Floor Area 819 Sq.ft. (76.1 Sq.M.)



Robinsway WA14 3ER

£395,000



The Property

A beautifully renovated two-bedroom semi-detached freehold home, ideally positioned on the ever-popular Robins Way in Bowdon. This stylish property has been thoughtfully updated throughout, offering modern living accommodation perfect for first-time buyers, young families, or those looking to downsize without compromise.

The home benefits from a private driveway providing off-road parking, along with a well-maintained rear garden ideal for entertaining, relaxing, or family use. Internally, the home has a large living room and separate kitchen. On the second floor there are two generous double bedrooms with a stylish family bathroom. The property has undergone recent renovation works, creating a fresh and contemporary finish ready for immediate occupation.

Situated within catchment for several highly regarded local schools, including St Vincent's Catholic Primary School, Well Green Primary School, and Altrincham College, the property is also conveniently located for access to Hale village, Altrincham town centre, local amenities, and excellent transport links.

Early viewing is highly recommended to appreciate the quality of accommodation and sought-after location on offer.

Directions

WA14 3ER



- No Onward Chain
- Off Road Parking
- South Facing Rear Garden
- Two Double Bedrooms
- Modernised Throughout
- Freehold
- Lounge Diner
- Catchment for Highly Regarded Schools
- Walking Distance to Local Amenities
- Easy Access to Motorway Links

Postcode - WA14 3ER

EPC Rating -

Floor Area - 819.00 sq ft

Local Authority -

Council Tax - A

