



19 Cambridge Street, Redfield

Offers in Region of £365,000



19 Cambridge Street

Redfield, Bristol

Council Tax band: A

Tenure: Freehold

EPC Energy Efficiency Rating: D

EPC Environmental Impact Rating: D

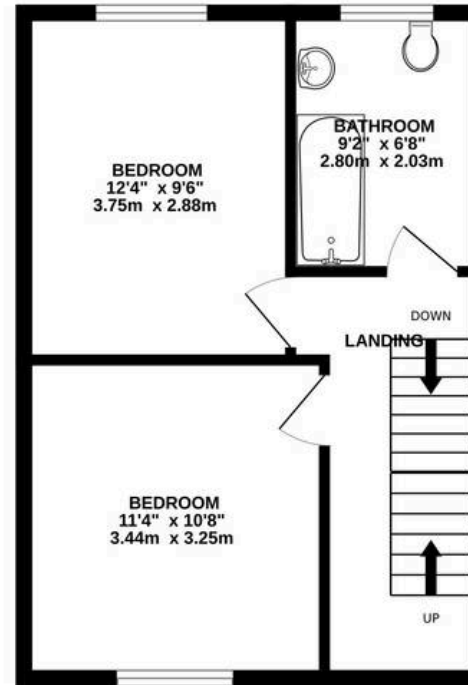
- Sought After Location
- Close To High Street & Parks
- Wonderful Living Space
- Extended Kitchen
- Open Plan Living Area
- Three Double Bedrooms
- Loft Conversion
- West Facing Garden
- Double Glazing & Gas Central Heating



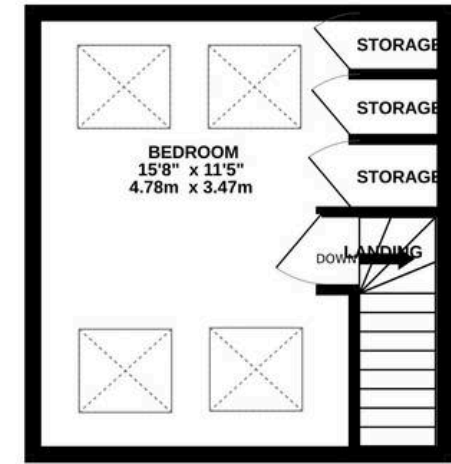
GROUND FLOOR
467 sq.ft. (43.3 sq.m.) approx.



1ST FLOOR
380 sq.ft. (35.3 sq.m.) approx.



2ND FLOOR
229 sq.ft. (21.3 sq.m.) approx.



TOTAL FLOOR AREA : 1076 sq.ft. (100.0 sq.m.) approx.

Whilst every attempt has been made to ensure the accuracy of the floorplan contained here, measurements of doors, windows, rooms and any other items are approximate and no responsibility is taken for any error, omission or mis-statement. This plan is for illustrative purposes only and should be used as such by any prospective purchaser. The services, systems and appliances shown have not been tested and no guarantee as to their operability or efficiency can be given.

Made with Metropix ©2025

