



## Windmill Close, KT6

£370,000

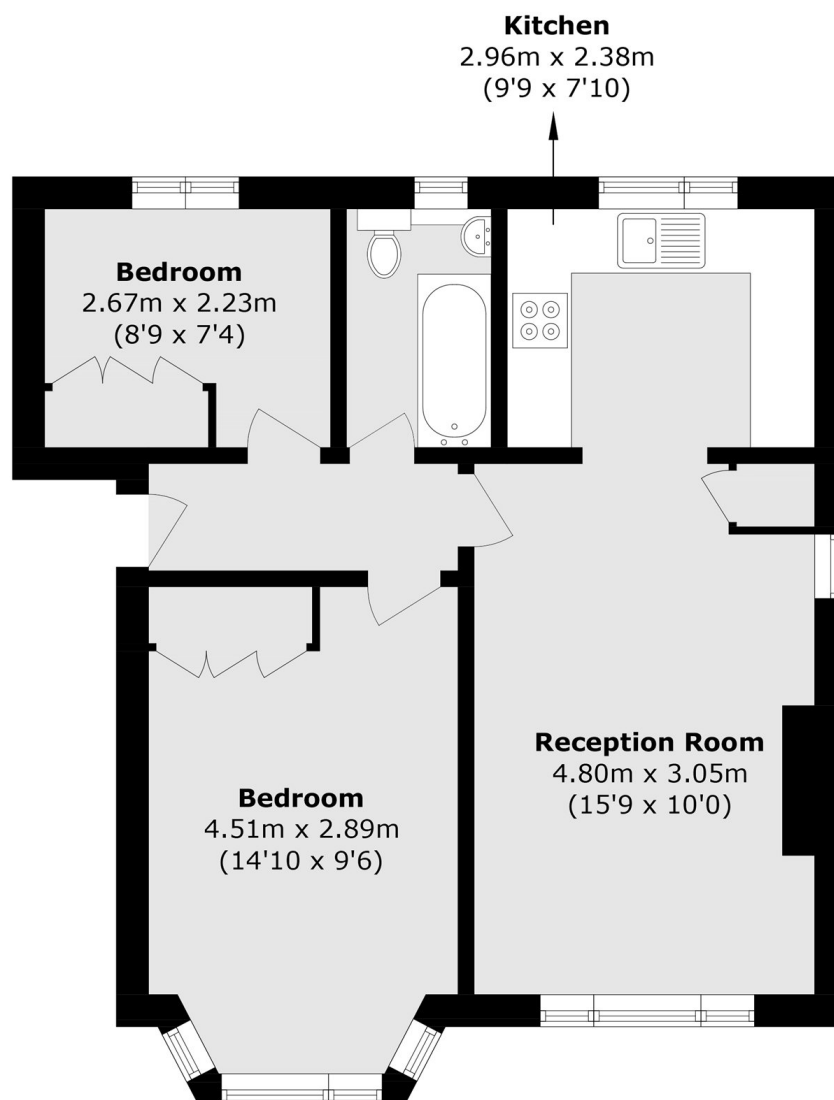
A two-bedroom first floor apartment that is stylishly refurbished throughout is offered to the market with a brand new lease upon completion. The property further benefits from a modern kitchen, separate reception room and an immaculate private garden.

Windmill Close is located a short distance from the local parade of shops and not far from Surbiton high street and Surbiton Station with plenty of amenities and it's fast train into Waterloo respectively.

### Features

- New Lease Upon Completion
- Two Bedrooms
- First Floor
- One Bathroom
- Private Garden
- Delightfully Refurbished

# Windmill Close, Surbiton, KT6



Total area (approx.): 49.2 sq. m (529.5 sq. ft)