
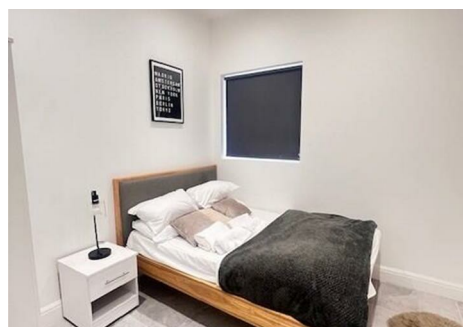
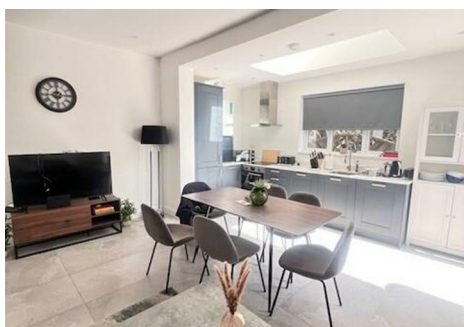


est 1979

 Jeremy
Leaf & Co.



Woodside Park Road, London

£4,000 Per Month

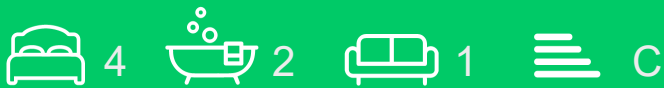
- Four bedrooms
- Ground floor flat
- High standard decor
- Off-street parking
- Close to North Finchley shops
- Two bathrooms
- Fully furnished
- Private garden
- 0.25 miles to Woodside Park tube
- Immediate occupation available

863 High Road, London, N12 8PT
020 8446 4295

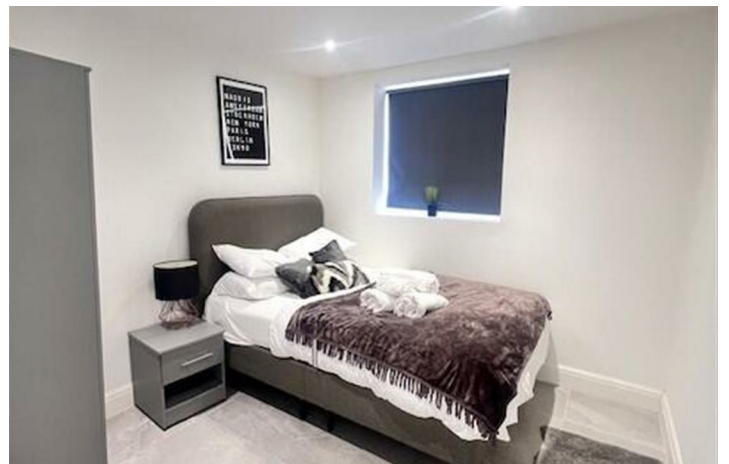
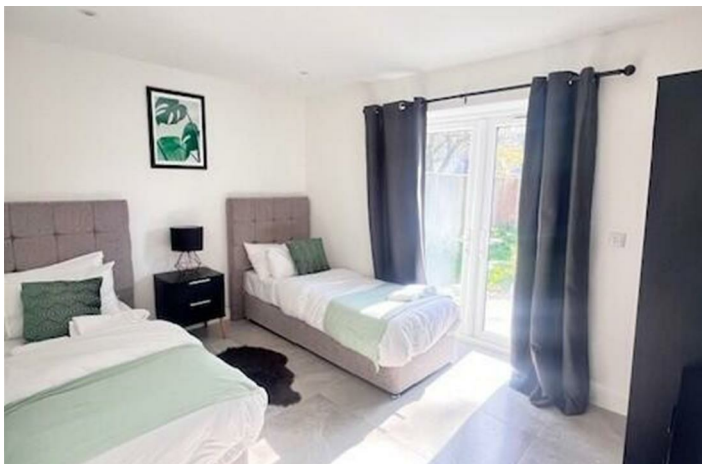
property@jeremyleaf.co.uk
<https://www.jeremyleaf.co.uk/>

Woodside Park Road, London, N12 8RT

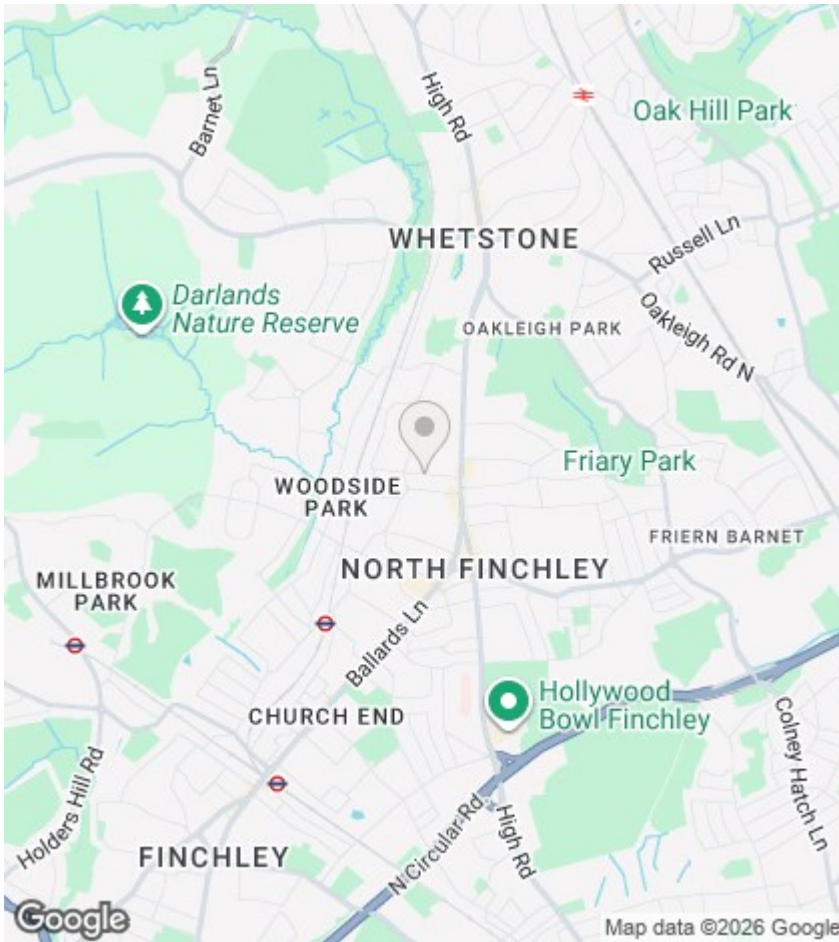
This well-appointed ground floor garden flat boasts four well-proportioned bedrooms and two modern bathrooms, making it ideal for families or professionals looking for a comfortable living space. Situated within 0.25 miles of Woodside Park tube station on the Northern Line, the shops and bus connections of North Finchley High Road are also just a short distance away. This property is available for immediate occupation - viewing highly recommended.



Council Tax Band: E







Directions

Viewings

Viewings by arrangement only. Call 020 8446 4295 to make an appointment.

EPC Rating:

C

Energy Efficiency Rating		Current	Potential
Very energy efficient - lower running costs			
(92 plus) A			
(81-91) B			
(69-80) C		74	74
(55-68) D			
(39-54) E			
(21-38) F			
(1-20) G			
Not energy efficient - higher running costs			
England & Wales		EU Directive 2002/91/EC	