

ASKING PRICE

**£600,000**

**Oakley Road**

, BR2 8HG



## PROPERTY SUMMARY

Oakley Farm Cottages is set within a convenient yet semi-rural location off Oakley Road close to Bromley town centre and Locksbottom village. Local schools include Keston and Trinity Church of England primary schools. Secondary schools including Hayes and Bishop Justus. The property itself is a three bedroom detached house offering ground floor accommodation including an entrance hall leading to two spacious reception rooms with one leading to the kitchen plus cloakroom. The master bedroom features an ensuite shower room with a family bathroom serving the additional two bedrooms. The property features a wide garden to front and pedestrian access to rear leading to local shops in Bromley Common. Chain Free, viewing recommended.

Local Authority: Bromley  
Council Tax Band: C  
EPC: E

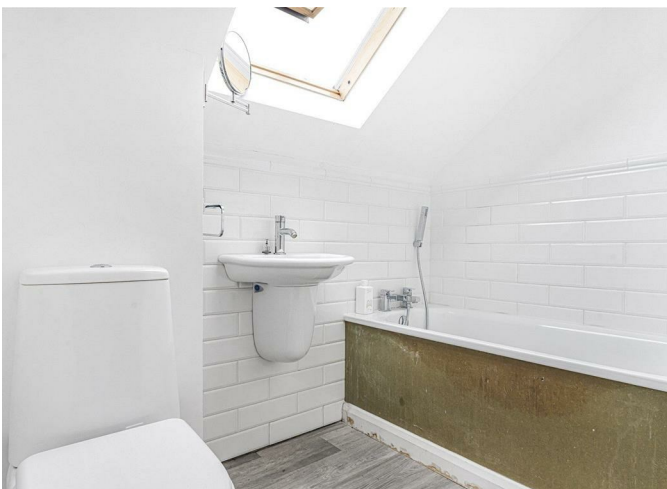
4



2



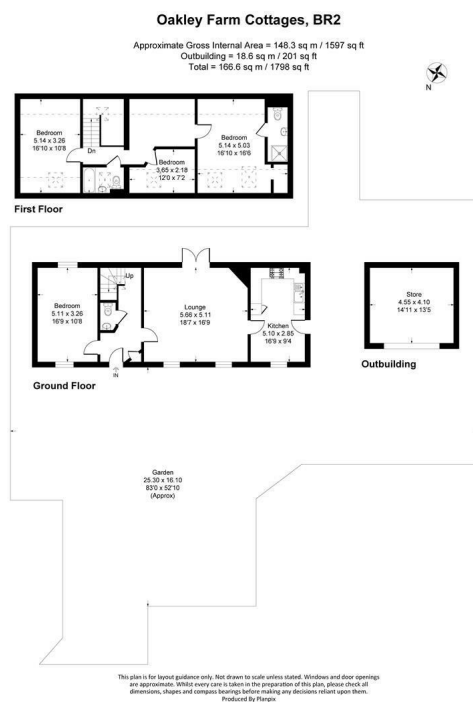
2







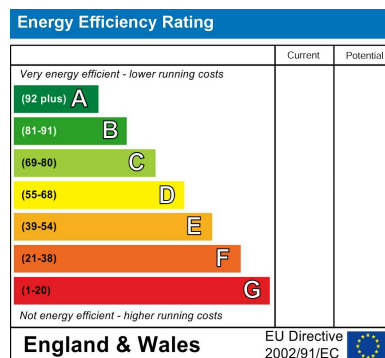




4

2

2



## EPC RATING: COUNCIL TAX BAND:

Agents Note: Whilst every care has been taken to prepare these particulars, they are for guidance purposes only. All measurements are approximate and are for general guidance purposes only and whilst every care has been taken to ensure their accuracy, they should not be relied upon and potential buyers/tenants are advised to recheck the measurements

Sinclair Hammelton

**OFFICE ADDRESS**  
 49 Station Approach  
 Hayes  
 Kent  
 BR2 7EB

**OFFICE DETAILS**  
 020 8462 0360  
[infohy@sinclairhammelton.co.uk](mailto:infohy@sinclairhammelton.co.uk)