



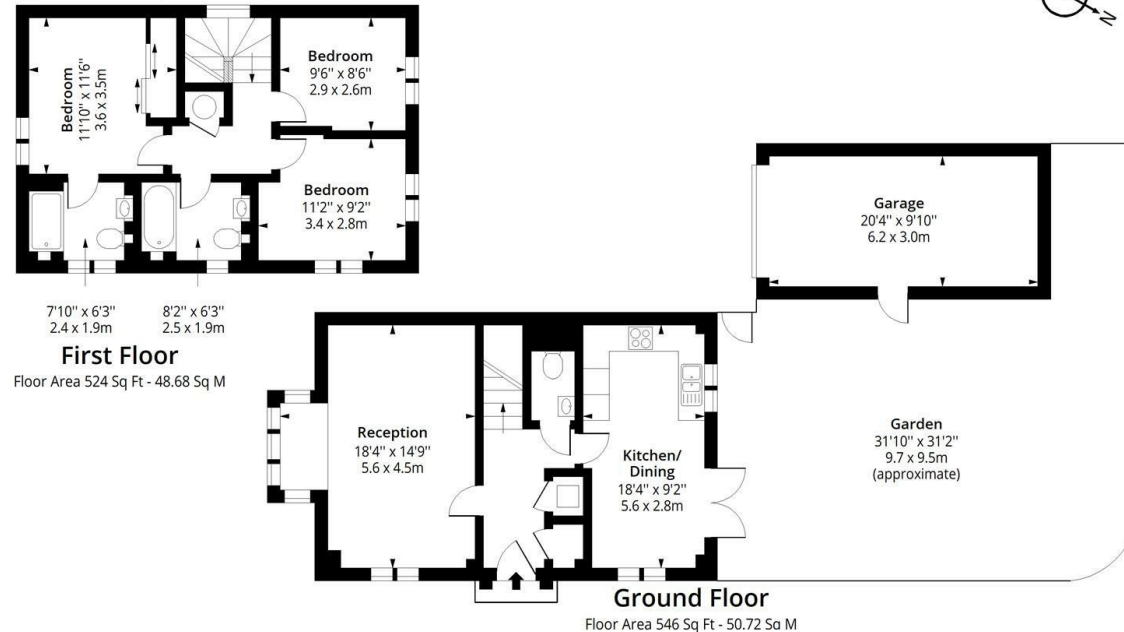
## 10, Oakdale Road, Maidenhead, SL6 2FJ

£2,950

- Underfloor heating for comfort
- EPC Rating: B
- Driveway parking plus single garage
- Modern three-bedroom detached new-build home
- Nearby riverside walks and parks for outdoor leisure

## Oakdale Road, SL6

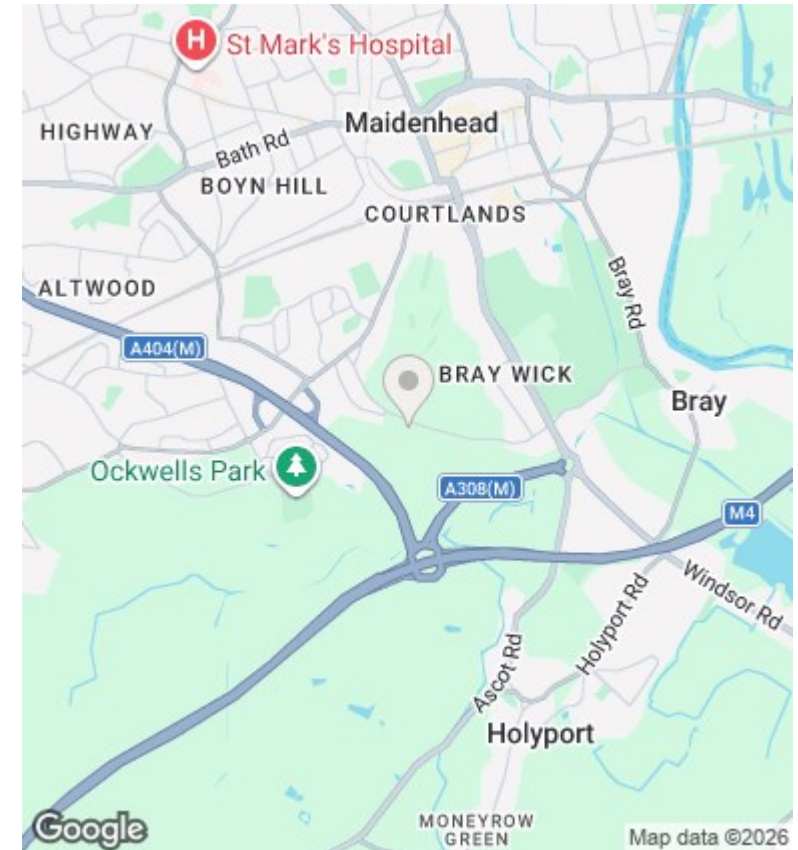
Approx. Gross Internal Area 1070 Sq Ft - 99.40 Sq M  
Approx. Gross Garage Area 200 Sq Ft - 18.58 Sq M



Measured according to RICS IPMS2. Floor plan is for illustrative purposes only and is not to scale. Every attempt has been made to ensure the accuracy of the floor plan shown, however all measurements, fixtures, fittings and data shown are an approximate interpretation for illustrative purposes only. 1 sq m = 10.76 sq feet.

lpaplus.com

Date: 14/1/2026



## Directions

## Viewings

Viewings by arrangement only. Call 0208 075 4927 to make an appointment.

## Council Tax Band

New Build

## EPC Rating:

B

Energy Efficiency Rating		
	Current	Potential
Very energy efficient - lower running costs		
(92 plus) <b>A</b>		
(81-91) <b>B</b>	87	88
(69-80) <b>C</b>		
(55-68) <b>D</b>		
(39-54) <b>E</b>		
(21-38) <b>F</b>		
(1-20) <b>G</b>		
Not energy efficient - higher running costs		
<b>England &amp; Wales</b>	EU Directive 2002/91/EC	