



House - Detached

4 MAYES CLOSE, NORWICH, NR5 9AR

Per Month

£2,100 Per

FEATURES

- LARGE 5 BEDROOM STUDENT HOUSE
- COMES FULLY FURNISHED AND EQUIPPED
- CLOSE TO UEA AND LOCAL AMENITIES
- ENCLOSED GARDEN
- AVAILABLE FOR UPCOMING ACADEMIC YEAR
- ALL DOUBLE ROOMS



5 Bedroom House - Detached located in Norwich

* 5 BEDROOM STUDENT HOUSE * AVAILABLE FOR ACADEMIC YEAR 2025/2026 * CLOSE TO UEA *

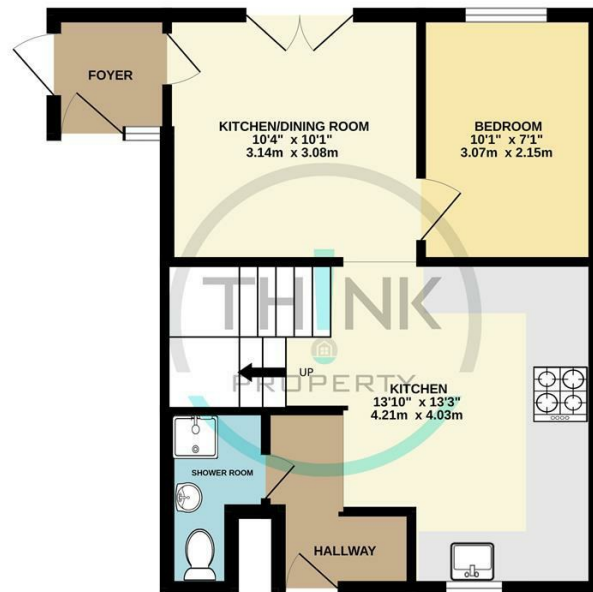
This 5 bedroom student house is a fantastic spacious property which comes fully furnished and equipped. The property is within walking distance to the UEA and is close to bus links and local amenities. The house consists of 5 double rooms, 1 of which does have an ensuite. There is a large lounge space and a great sized kitchen and dining area, and the property has 2 bathrooms which would be shared between four tenants. Available for upcoming academic year!

Call us on
01603 338433

norwich@thinkproperty.ltd
<https://www.thinkproperty.ltd/>

Council Tax Band
B

GROUND FLOOR



Whilst every attempt has been made to ensure the accuracy of the description contained here, measurements of doors, windows, rooms and any other items are approximate and no responsibility is taken for any error, omission or mis-statement. This plan is for illustrative purposes only and should be used as such by any prospective purchaser. The services, systems and appliances shown have not been tested and no guarantee as to their operability or efficiency can be given.
Made with Metropix C2025

Energy Efficiency Rating		Current	Potential
<i>Very energy efficient - lower running costs</i>			
(92 plus) A			
(81-91) B			85
(69-80) C			
(55-68) D		62	
(39-54) E			
(21-38) F			
(1-20) G			
<i>Not energy efficient - higher running costs</i>			
England & Wales		EU Directive	
		2002/91/EC	

Agents Note: Whilst every care has been taken to prepare these particulars, they are for guidance purposes only. All measurements are approximate and are for general guidance purposes only and whilst every care has been taken to ensure their accuracy, they should not be relied upon and potential buyers are advised to recheck the measurements.

