



HIVE

OLD COTTAGE ROMFORD
VERWOOD
BH31 7LE



Agent's introduction

A three-bedroom semi-rural cottage on the edge of Verwood with stunning countryside views, a cosy lounge with log burner, modern porch/snug, ground-floor bedroom, utility room, gated garden, parking and large garage with electric door. Full of character and potential. Viewing is highly recommended.



HIVE



HIVE



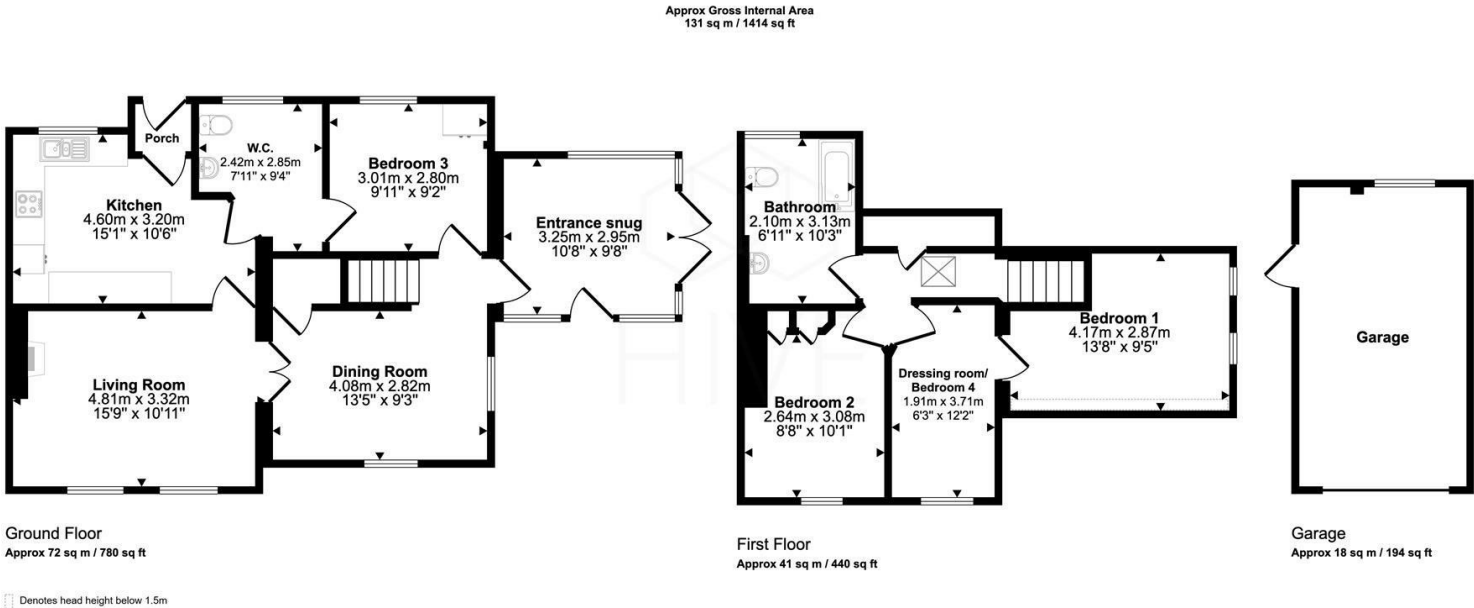
Property highlights

- Charming 1865 semi-rural cottage which is full of character and potential
- Recently added entrance porch/snug with stunning outlook
- Cosy lounge with log burner
- Ground-floor third bedroom for flexible living
- Spacious kitchen with adjoining utility room
- Two further bedrooms plus dressing room upstairs
- Gated rear garden and private parking
- Large detached garage with electric up-and-over door
- Offered with no forward chain
- Fibre has recently been installed to the area

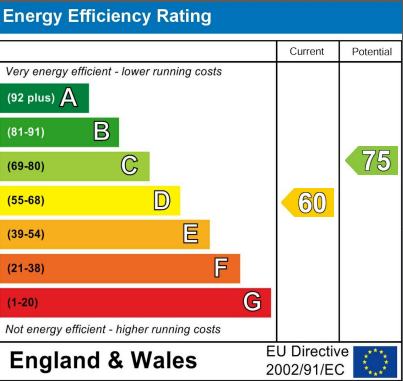


HIVE

Floor plan and EPC



This floorplan is only for illustrative purposes and is not to scale. Measurements of rooms, doors, windows, and any items are approximate and no responsibility is taken for any error, omission or mis-statement. Icons of items such as bathroom suites are representations only and may not look like the real items. Made with Snappy 360.







HIVE & Partners Unit F1, Arena Business Centre 9 Nimrod Way, Ferndown, BH21 7UH
01202 122 002 | www.hiveandpartners.co.uk | sales@hiveandpartners.co.uk