



**Price**  
**£315,000**

**Leasehold**

2x  1x  1x 

**Roseberry Gardens,  
Upminster, Essex, RM14**

**OVER 60?**

Secure this property  
for up to **59% less!**

 **DOUGLAS  
ALLEN**  
Helping you move forwards



## Main features

- Ground floor maisonette
- Front & rear garden
- Well maintained
- Ideal first purchase
- Close to local schools
- Convenient location for Upminster Town & Station (C2C Line)

## Accommodation

### GROUND FLOOR

#### Hallway

Bedroom 1: 13'8 x 9'9 (4.17m x 2.97m)

Bedroom 2: 12'9 x 8'6 (3.89m x 2.59m)

Kitchen: 11'0 x 9'5 (3.36m x 2.87m)

Shower Room: 7'5 x 5'3 (2.26m x 1.60m)

Lounge/Dining Room: 15'6 x 10'7 (4.73m x 3.23m)

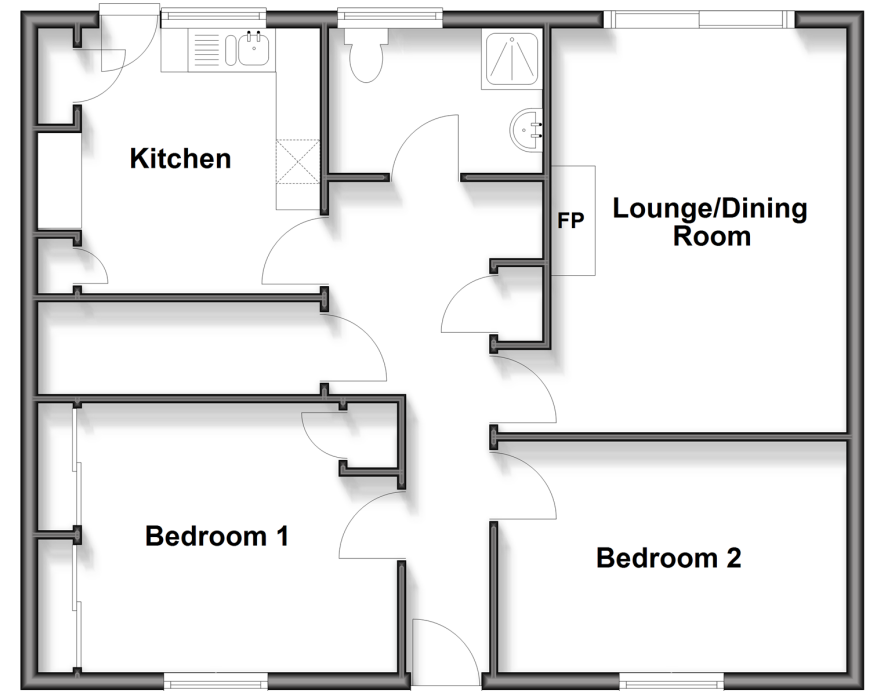
### OUTSIDE

Front Garden

Rear Garden

## Ground Floor

Approx. 68.0 sq. metres (732.0 sq. feet)



Call Hornchurch - 01708 437777 ■ [douglasallen.co.uk](http://douglasallen.co.uk)

- A private rental licensing scheme applies to some properties in this area, please check with the Local Authority before proceeding
- Legal advice should be taken to verify fixtures/fittings, planning, alterations and/or lease details
- Appliances & services are untested, dimensions are approximate and floor plans are not to scale
- Through a Homewise Home For Life Plan people aged 60+ can secure this property for up to 59% less, by purchasing a Lifetime Lease



51916536/20260223/CC1/SP