



316 Park Road, Great Sankey

£995

Ascend Properties is proud to present this charming two-bedroom terraced family home, for rent in the desirable location of Great Sankey.

Upon entry, a welcoming hallway guides you towards a fully equipped kitchen, setting the tone for comfortable living. Continuing through the property, discover a luminous lounge adorned with French doors opening onto the picturesque garden, seamlessly merging indoor and outdoor spaces for relaxed enjoyment.

Venture upstairs to find a spacious master bedroom complete with fitted mirrored wardrobes, alongside an additional well-proportioned bedroom. Completing the upper level is a modern three-piece family bathroom, catering to convenience and comfort.

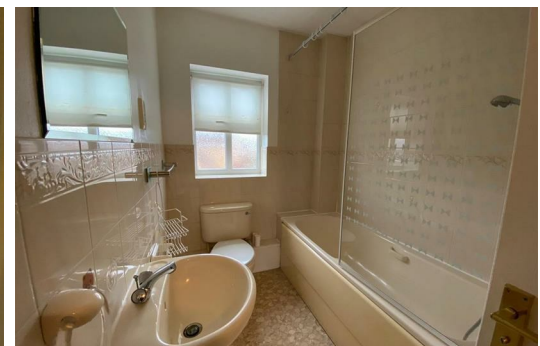
Outside, the property boasts off-road parking for two vehicles, enhancing practicality for residents.

Situated in the desirable suburb of Great Sankey, just a brief two-mile journey west of Warrington Town Centre, this residence offers a prime location favoured by families and professionals alike. With a dedicated train station facilitating easy commutes to neighbouring towns and cities, Great Sankey provides unparalleled convenience. Renowned for its esteemed primary and secondary schools, the area fosters a nurturing environment for education. Residents can also enjoy the recently refurbished leisure center and a diverse array of local amenities, including shops, pubs, and restaurants.

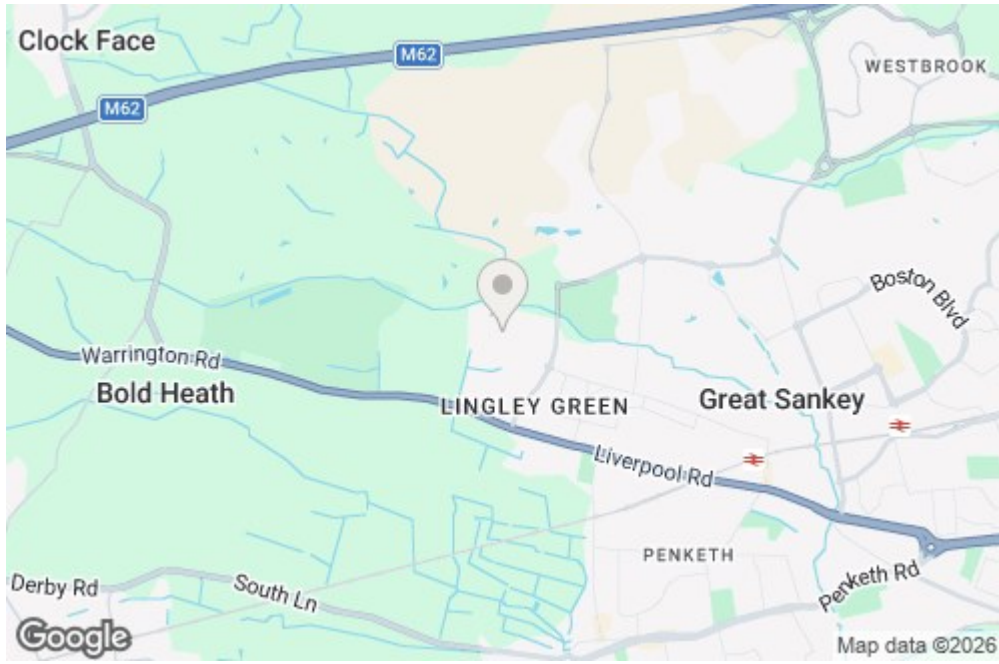
Deposit: £1,140

Available 17th July 2026

12 Month Tenancy
Council Tax Band B



316 Park Road, Warrington, Great Sankey, Cheshire, WA5 3RE



Energy Efficiency Rating		Environmental Impact (CO ₂) Rating	
Current	Potential	Current	Potential
71	88	G	B