



**POOLE
TOWNSEND**

The Wheel House, Cartmel

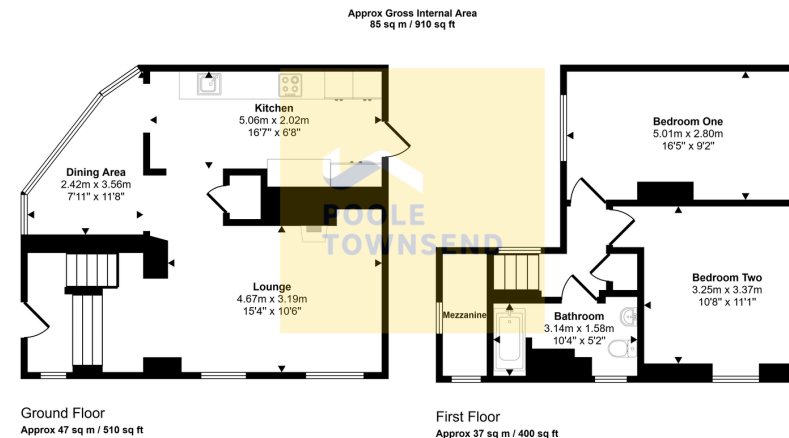
£575,000

🛏️ 2 🚿 1 🚗 1



- Detached cottage in a tranquil riverside setting along the River Eea
- Blends historic features with modern, contemporary living
- Lounge features a cosy wood-burning stove
- Modern kitchen opens onto a secluded courtyard garden
- Private outdoor spaces include a riverside patio and a walled rear garden
- Framed by the iconic Wheelhouse Bridge, adding character and charm
- Spacious open-plan reception room with distinct lounge, dining, and kitchen
- Dining area offers scenic riverside views
- Two generously sized double bedrooms with a stylish bathroom upstairs
- Freehold





This floorplan is only for illustrative purposes and is not to scale. Measurements of rooms, doors, windows, and any items are approximate and no responsibility is taken for any error, omission or mis-statement. Icons of items such as bathroom suites are representations only and may not look like the real items. Made with Made Snappy 360.

Set beside the tranquil waters of the River Eea and framed by the iconic Wheelhouse Bridge, this enchanting detached cottage seamlessly blends historic character with contemporary living. Full of charm and personality, the property offers deceptively spacious accommodation and the perfect balance of comfort and style, all offered with no onward chain. The light-filled, open-plan reception room is a true centrepiece, elegantly zoned to create a welcoming lounge with a wood-burning stove, a dining area with captivating riverside views, and a sleek, contemporary kitchen that flows effortlessly onto the secluded courtyard garden. Upstairs, two generously proportioned double bedrooms provide serene retreats, complemented by a stylish modern bathroom. Outside, a terraced riverside patio and lawn garden invites quiet reflection, while a walled rear garden offers a charming sanctuary, ideal for entertaining or relaxing in privacy.

Visit us at
www.pooletownsend.co.uk
enquiries@pooletownsend.co.uk

We are open
 Monday – Friday 9.00 – 5.00
 Saturday 9.00 – 1.00

Barrow 01229 811811
 Ulverston 01229 588111
 Grange 015395 33316
 Kendal 01539 734455
 Milnthorpe 015395 62044