



WESTWARD RISE

BARRY

WESTWARD RISE

GARDEN SUBURB, CF 62 6PN

GUIDE PRICE

£290,000 -

FREEHOLD



3 Bed



1 Bath



786.00 sq ft

Located in the desirable area of Westward Rise, Barry, this delightful mid-terrace house presents an excellent opportunity for families and first-time buyers alike. The property boasts three well-proportioned bedrooms, providing ample space for relaxation and personalisation. The inviting reception room serves as a perfect gathering space for family and friends, ensuring a warm and welcoming atmosphere.

The house features a conveniently located bathroom, designed to cater to the needs of modern living. With its practical layout, this home offers both comfort and functionality, making it an ideal choice for those seeking a blend of style and convenience.

Situated in a vibrant community, residents will enjoy easy access to local amenities, schools, and parks, enhancing the overall appeal of this property. The surrounding area is known for its friendly atmosphere and picturesque surroundings, making it a wonderful place to call home.

This mid-terrace house at Westward Rise is not just a property; it is a place where memories can be made and cherished for years to come. Whether you are looking to invest or settle down, this home is sure to meet your needs and exceed your expectations. Do not miss the chance to view this lovely property and envision your future in this delightful setting.

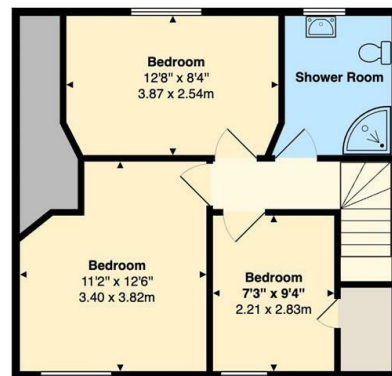
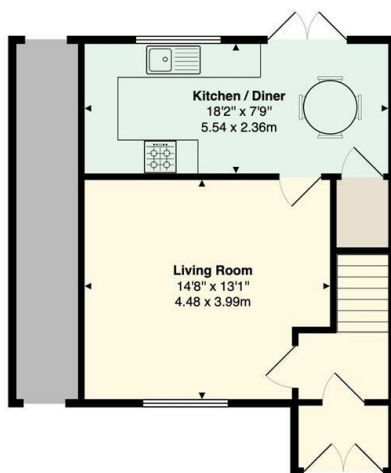




Energy Efficiency Rating		
	Current	Potential
Very energy efficient - lower running costs		
(92 plus) A		
(81-91) B		
(69-80) C	69	83
(55-68) D		
(39-54) E		
(21-38) F		
(1-20) G		
Not energy efficient - higher running costs		
England & Wales	EU Directive 2002/91/EC	



Westward Rise, Barry, CF62 6PN



Total Area: 967 ft² ... 89.8 m²

All measurements are approximate and for display purposes only

BARRY & THE VALE'S HOME FOR

STYLISH SALES
& LETTINGS



KNIGHTS