

127 No1 Thames Valley Wokingham Road, Bracknell, RG42 1AG

£190,000

Council Tax Band: B

H&H
BESPOKE



Welcome to One Thames Valley, a lovely studio apartment located on Wokingham Road in the picturesque town of Bracknell. This property offers a unique opportunity to create a comfortable base in a sought-after location.

Situated in a popular neighbourhood, this house provides a peaceful retreat from the hustle and bustle of everyday life.

The location of One Thames Valley is truly unbeatable. Surrounded by lush greenery and within easy reach of local amenities, you'll enjoy the perfect blend of tranquillity and convenience. Take a leisurely stroll along Wokingham Road or explore the nearby parks and recreational areas for a breath of fresh air.

Don't miss this opportunity to make One Thames Valley your own. With its prime location and endless potential, this house is just waiting to be transformed into the home of your dreams. Contact us today to

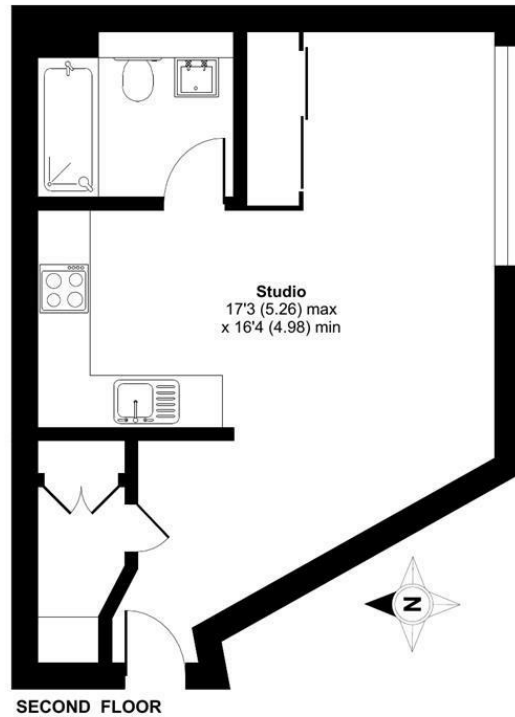


13 Sherrard Street, Melton Mowbray, Leicestershire, LE13 1XH
0333 242 3760
Beth@houseandhomebespoke.co.uk

Thames Valley, Wokingham Road, Bracknell, RG42

Approximate Area = 365 sq ft / 34 sq m

For identification only - Not to scale



Energy Efficiency Rating		
	Current	Potential
Very energy efficient - lower running costs		
(92 plus) A		
(81-91) B		
(69-80) C		
(55-68) D	66	66
(39-54) E		
(21-38) F		
(1-20) G		
Not energy efficient - higher running costs		
England & Wales	EU Directive 2002/91/EC	