

tavistockbow

For Rent



People Make Places



Bennet Street, St James's SW1

1 bedroom | 710 sq ft

£1,150 pw

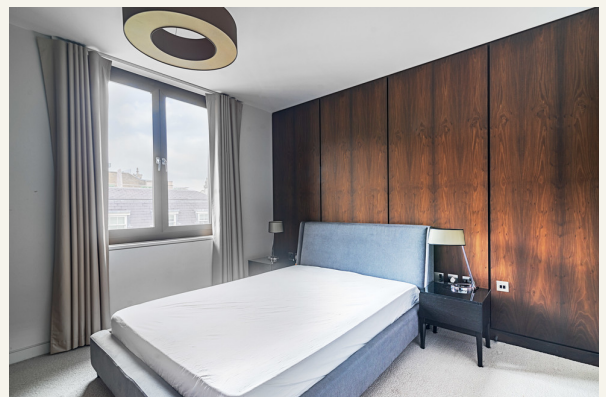




Contemporary throughout with several luxurious touches including a fitted coffee machine, inbuilt TV in the bathroom and wine fridge, this stunning one bedroom apartment occupies a prime location in St James's. The building also benefits from weekday security. Available immediately, furnished.

What you need to know

- One bedroom
- One bathroom
- Open plan kitchen reception room
- Modern finishes
- Air conditioning throughout
- Furnished
- Available immediately
- Moments from The Ritz
- Access via lift
- Closest tube is Green Park





Overview

Situated in a popular and well-maintained building with a grand residential entrance and weekday security and maintenance, is this spacious one bedroom apartment. Wide planked wooden floors give the apartment a Scandinavian feel, while the white matt kitchen units add to the overall style. The kitchen is part open-plan to the reception room and is fitted with added touches like an inbuilt coffee machine and wine fridge, while the luxurious bathroom has a separate shower and bath with an inbuilt television to enjoy. Useful storage is found in the double bedroom. Each flat has access to a further private storage room which is located in the communal parts.

Bennet Street lies just off Piccadilly, meaning Mayfair is easily accessible on foot as well as other Central London neighbourhoods like Soho, Covent Garden and Westminster. Residents are spoilt for choice with nearby Green Park or St James's Park for outdoor space, while the closest underground services can be reached via Green Park (Jubilee, Piccadilly, and Victoria Lines), making this property ideally suited to a tenant working in Canary Wharf.

The apartment is available immediately on a furnished basis.
Westminster Council tax band: G.



People Make Places

London is a collection of inspiring urban villages and one of the most exciting places in the world to live, work & play.

We work with both property owners and their occupiers, sharing the story of these vibrant neighbourhoods, conveying the unique soul & energy to future custodians, the people who'll keep them buzzing.

And unlike many real estate businesses we're not just about buildings, because streets & buildings don't make a neighbourhood.

We're about building relationships, because **people make places**.

MISINTERPRITATION ACT [COPYRIGHT] DISCLAIMER: Tavistock Bow Ltd for themselves and for the vendor(s) of this property whose agents thy are, given notice that: 1. These particulars do not constitute, not constitute any part of, an offer or contract. 2. None of the statements contained in these particulars as to the property are to be relied on as statements or representations of fact. 3. Any intending purchaser or lessee must satisfy themselves by inspection or otherwise as to the correctness of each of the statements contained in these particulars. 4. The vendor(s) or lessor(s) do not make or give and neither Tavistock Bow Ltd nor any person in their employment has any authority to make or give any representation or warranty whatever in relation to this property. Finance Act 1989, Unless otherwise stated all prices and rents are quote exclusive of VAT. Property Misrepresentation Act 1991; These details are believed to be correct at the time of compilation but may be subject to subsequent amendment.

Follow us:     @tavistockbow

Score	Energy rating	Current	Potential
92+	A		
81-91	B		
69-80	C	70 c	71 c
55-68	D		
39-54	E		
21-38	F		
1-20	G		

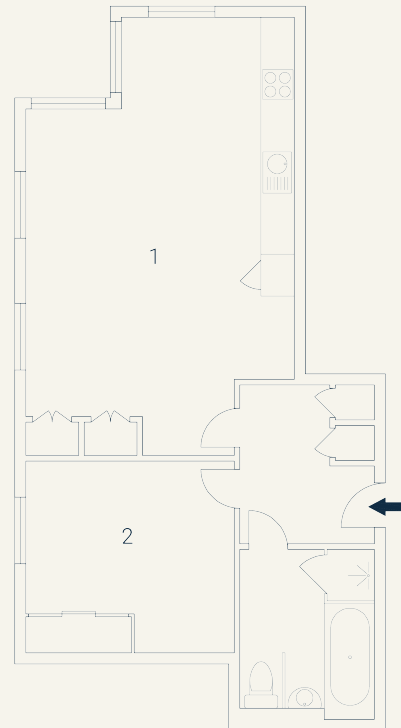
Bennet Street, SW1

Approximate Gross Internal Area 62 sqm/ 667 sq ft

Sixth Floor

1 Living/
Dining/
Kitchen
7.89 x 4.83M
25'11" x 15'10"

2 Bedroom
3.75 x 3.45M
12'4" x 11'4"



Floorplan produced for Tavistock Bow. Illustration for identification purposes only and not to scale. All measurements are approximate and not to be relied upon.

tavistockbow

21 New Row, Covent Garden,
London, WC2N 4LE

t: 020 7477 2177
e: hello@tavistockbow.com
w: tavistockbow.com



Bennet Street, St James's SW1