



Horseferry Road, SW1P

£1,100,000

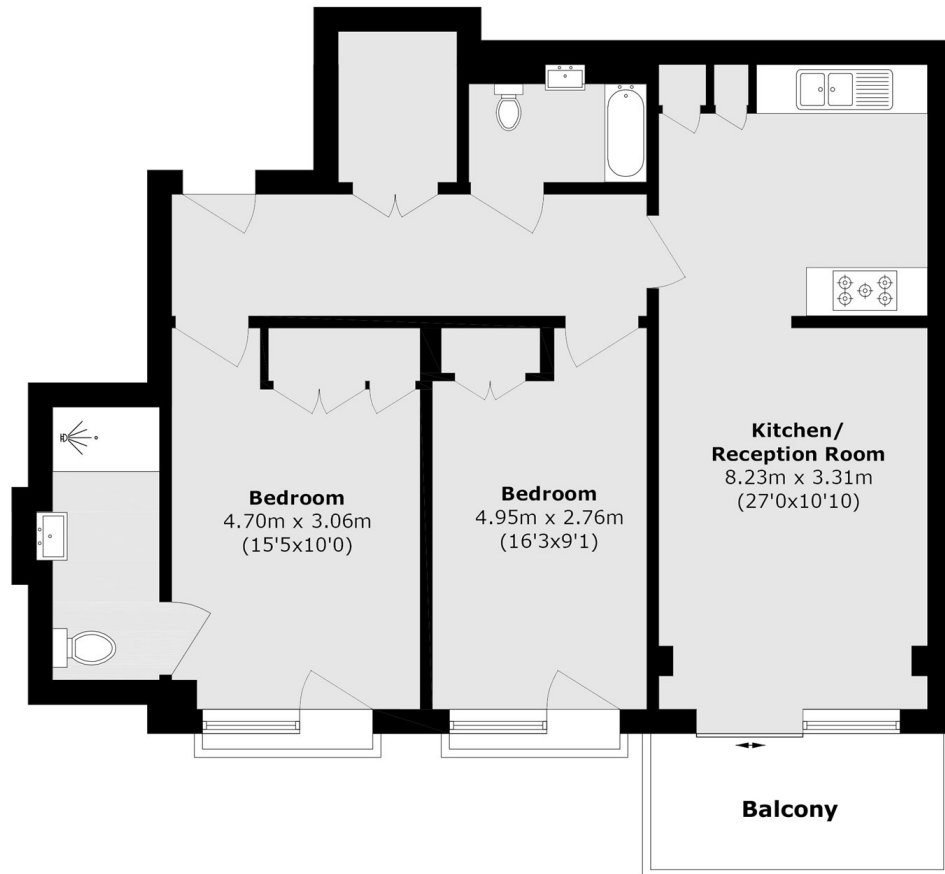
This property is located in the heart of Westminster and comprises of two double bedrooms, two bathrooms and an open plan kitchen and living area. This apartment benefits from a private balcony overlooking the communal gardens, a fully equipped gym and a concierge.

The Courthouse lies on the corner of Marsham Street and Romney Street and is only a short distance to St. James's Park, Buckingham Palace, Parliament Square and the River Thames. There are superb transport links at St. James's Park (Circle and District Lines), Victoria Station (Gatwick Express, British Rail Mainline, Circle, District and Victoria lines) with a further tube station at Westminster (Jubilee Line).

Features

- Two Bedrooms
- Two Bathrooms
- Private Balcony
- Concierge
- Communal Gardens
- Westminster

Horseferry Road, London, SW1P



Total area (approx.): 76.4 sq. m (822.4 sq. ft)

Balcony area (approx.): 6.04 sq. m (65.0 sq. ft)