

## Hoveden Road, Mapesbury, NW2

£500,000

🛏️ 2 🚿 1 🚗 1



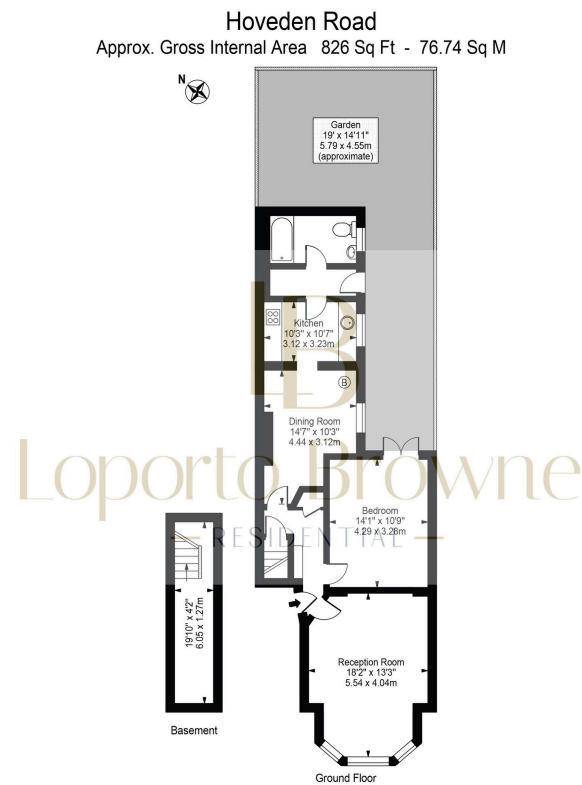
A chain-free garden flat set within a handsome period property in the ever-desirable Mapesbury Conservation Area, moments from Mapesbury Dell and surrounded by some of NW2's best amenities. 'Currently advertised as a two-bedroom apartment, though Loporto Browne Residential believe the space also works exceptionally well as a luxurious one-bedroom garden flat, with generous proportions and scope to reconfigure or extend.

Liana & Oli are delighted to represent this unique home in this stunning location.

**GUIDE PRICE £500,000 to £550,000**

## Key Features

- GUIDE PRICE £500,000 to £550,000
- Chain-free garden flat in the Mapesbury Conservation Area
- Direct garden access with scope to extend (STPP)
- Cellar providing excellent additional storage
- Exceptional transport links (Jubilee, Thameslink & Overground)
- Moments from Mapesbury Dell with strong local community
- Currently arranged as two bedrooms
- Virtually staged to show layout potential
- Lease 207 years remaining SC 2,206.66
- Liana & Oli are delighted to represent this unique home in this stunning location



For Illustration Purposes Only - Not To Scale

This floor plan should be used as a general outline for guidance only and does not constitute in whole or in part an offer or contract.  
 Any intending purchaser or lessee should satisfy themselves by inspection, searches, enquiries and full survey as to the correctness of each statement.  
 Any areas, measurements or distances quoted are approximate and should not be used to value a property or be the basis of any sale or let.