



**Connells**

St. Georges Lane North  
Worcester



## Property Description

A well-presented two-bedroom mid-terrace home situated on the popular St George's Lane North in Worcester, offering spacious and versatile accommodation ideal for first-time buyers, small families, or investors.

The ground floor comprises a welcoming dining room to the front, leading through to a separate living room, providing an excellent space for entertaining. To the rear, the property benefits from a fitted kitchen with access to a useful utility room and a convenient downstairs WC.

Upstairs, there are two well-proportioned bedrooms along with a family bathroom.

Externally, the property boasts a well-maintained rear garden, offering a pleasant outdoor space for relaxation and recreation. On-street parking is available to the front of the property.

Located within easy reach of local amenities, schools, and transport links, this home combines practical living with a desirable location.

Early viewing is highly recommended.

## Ground Floor

### Dining Room

Front facing double glazed bay window, pendant ceiling light, radiator, fireplace and laminate flooring.

### Cloakroom

Tiled flooring.

### Bathroom

Rear facing double glazed window, spotlights, W.C, wash hand basin, bath, walk in shower, radiator and underfloor heating.

### Living Room

Rear facing double glazed patio doors, pendant ceiling light, radiator, fireplace and laminate flooring.

Stairs to the first floor.

Door through to the kitchen.

### Kitchen

Side facing double glazed window, ceiling light, wall and base units, stainless steel sink and drainer unit, boiler, part tiled walls, space for appliances and laminate flooring.

Door through to the utility room.

### W.C

W.C with tile flooring and wash hand basin.

## First Floor

### Landing

Ceiling light and carpet flooring.

### Utility Room

Door to the side leading to the rear garden.

Rear velux window, spotlights, base units, space for appliances, sink, part tiled walls and a radiator.

Door to the W.C.

### Bedroom One

Front facing double glazed window, pendant ceiling light, radiator, fireplace, storage cupboard and carpet flooring.

### Bedroom Two

Rear facing double glazed window, ceiling light, radiator, fireplace, and carpet flooring.

### Outside

#### Outside Front

To the front of the property there is a path leading to the front door.

There is on street parking.

#### Outside Rear

To the rear of the property is a flat slabbed garden. There are mature shrubbery surrounds and side access.

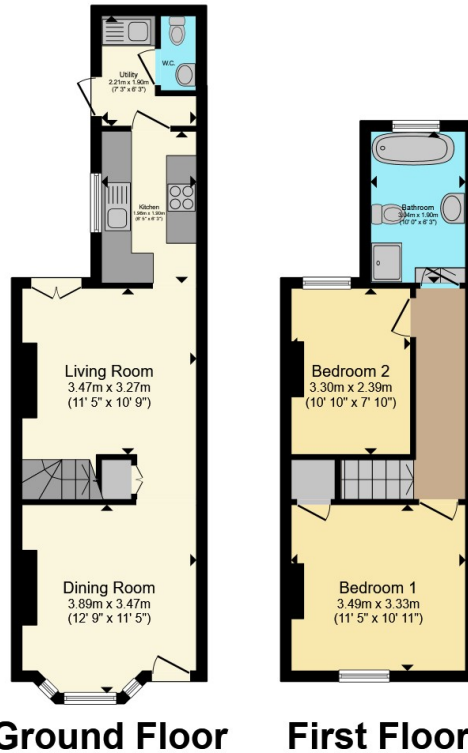
## Services

All main services are connected to the property.









Total floor area 70.4 m<sup>2</sup> (758 sq.ft.) approx

This floor plan is for illustrative purposes only. It is not drawn to scale. Any measurements, floor areas (including any total floor area), openings and orientation are approximate. No details are guaranteed, they cannot be relied upon for any purpose and they do not form part of any agreement. No liability is taken for any error, omission or misstatement. A party must rely upon its own inspection(s). Powered by [www.propertybox.io](http://www.propertybox.io)



To view this property please contact Connells on

**T 01905 611 411**

**E [worcester@connells.co.uk](mailto:worcester@connells.co.uk)**

3 Foregate Street  
WORCESTER WR1 1DB

EPC Rating: Council Tax  
Awaited Band: B

Tenure: Freehold

**view this property online [connells.co.uk/Property/WOR315836](http://connells.co.uk/Property/WOR315836)**



1. MONEY LAUNDERING REGULATIONS Intending purchasers will be asked to produce identification documentation at a later stage and we would ask for your co-operation in order that there will be no delay in agreeing the sale. 2. These particulars do not constitute part or all of an offer or contract. 3. The measurements indicated are supplied for guidance only and as such must be considered incorrect. Potential buyers are advised to recheck measurements before committing to any expense. 4. We have not tested any apparatus, equipment, fixtures, fittings or services and it is in the buyers interest to check the working condition of any appliances.

Connells Residential is registered in England and Wales under company number 1489613, Registered Office is Cumbria House, 16-20 Hockliffe Street, Leighton Buzzard, Bedfordshire, LU7 1GN. VAT Registration Number is 500 2481 05.

**See all our properties at [www.connells.co.uk](http://www.connells.co.uk) | [www.rightmove.co.uk](http://www.rightmove.co.uk) | [www.zoopla.co.uk](http://www.zoopla.co.uk)**

Property Ref: WOR315836 - 0002