

Crown Square, SE1

£4,500 Per calendar month

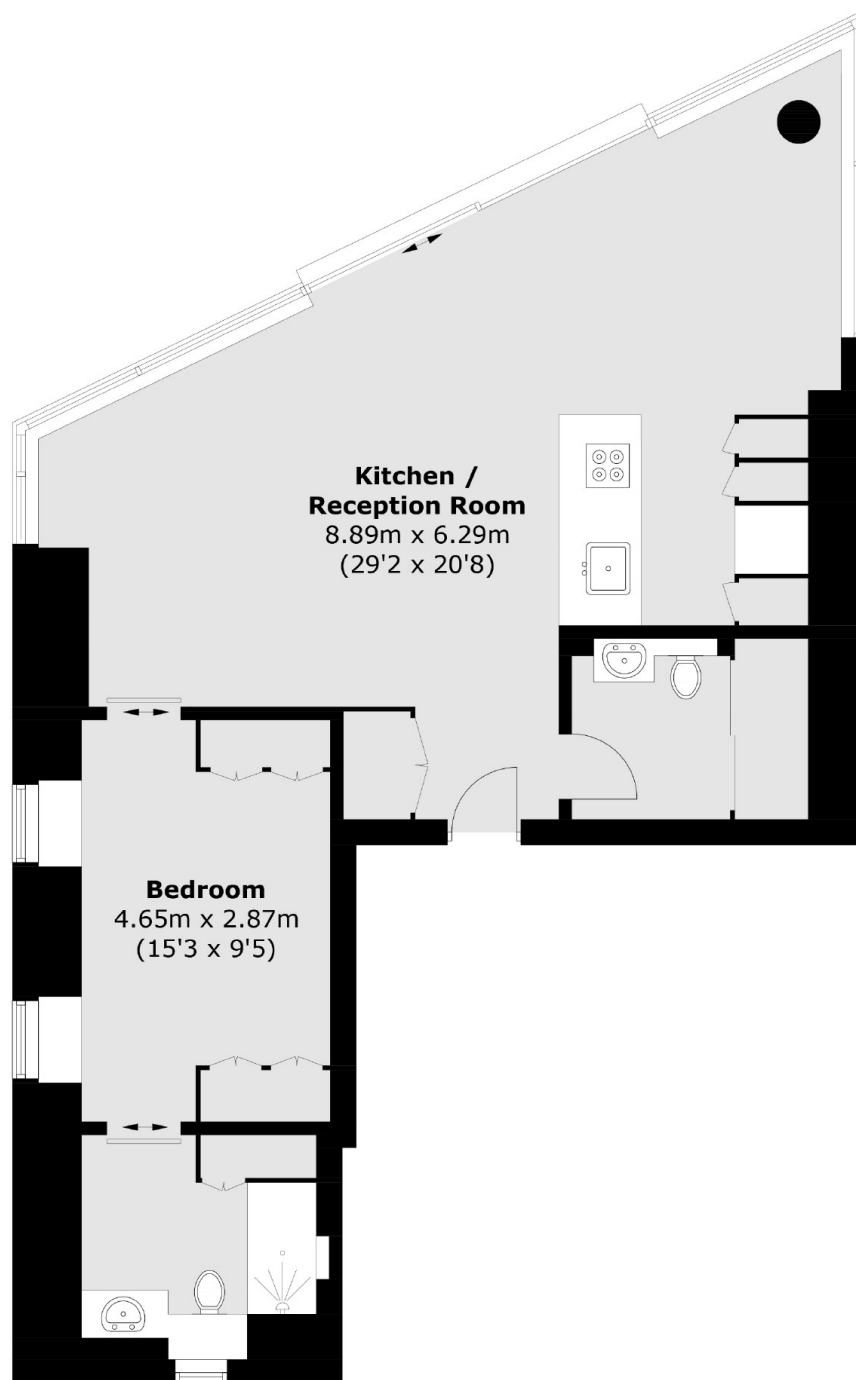
A one bedroom apartment on the 9th floor with floor-to-ceiling double-glazed windows allowing maximum light in and also emphasising the feeling of space. The highest quality fittings have been installed, including Miele kitchen appliances, underfloor heating, comfort cooling and home automated system for lighting and blind control.

One Tower Bridge sits on the banks of the River Thames, and is considered one of the most sought after developments in London. London Bridge, Tower Hill and Tower Gateway are all within walking distance.

Features

- One Double Bedroom
- One Tower Bridge
- Swimming Pool
- Furnished
- Gym
- Spa

Crown Square, London, SE1



Total area (approx.): 76.4 sq. m (822.4 sq. ft)

Dexters

Tower Bridge
50 Shad Thames
London
SE1 2LY

Lettings
0207 650 5105

Energy Rating: C. We aim to make our particulars both accurate and reliable. However they are not guaranteed; nor do they form part of an offer or contract. If you require clarification on any points then please contact us, especially if you're traveling some distance to view. Please note that appliances and heating systems have not been tested and therefore no warranties can be given as to their good working order.

 **RICS** | Regulated
Estate Agent
and Letting Agent

dexters.co.uk