



20 Station Road

Plympton, Plymouth, PL7 2AT

£160,000



Beautifully-presented first floor apartment within the popular Whitewater Court, located in the centre of Plympton. The accommodation briefly comprises an entrance hall & lounge/diner with a balcony, kitchen, 2 bedrooms & shower room. Residential parking. Communal & rooftop gardens. Lifts, communal areas & laundry facilities.



STATION ROAD, PLYMPTON, PLYMOUTH PL7 2AT

ACCOMMODATION

Solid wood fire door opening into the entrance hall.

ENTRANCE HALL 9'10" x 4'2" (3.01 x 1.29)

3.01 x 1.29 then 2.94 x 0.98 An 'L'-shaped room with doors leading through to the lounge/diner, both bedrooms and the shower room. Storage cupboards. Telephone entry system.

LOUNGE/DINER 18'0" x 10'0" (5.50 x 3.06)

Wooden doors with inset glass panelling opening into the kitchen. uVC double-glazed patio doors opening onto the balcony.

KITCHEN 8'11" x 6'0" (2.72 x 1.84)

Fitted with a matching range of base and wall-mounted units incorporating a roll-edged laminate worktop with an inset one-&a-half bowl composite sink and mixer tap. Inset 4-ring electric hob with a stainless-steel extractor over. Integrated Neff oven, fridge and freezer. Space for a washing machine.

BEDROOM ONE 15'5" x 8'3" (4.72 x 2.53)

Built-in double wardrobe. uPVC double-glazed window to the front elevation.

BEDROOM TWO 13'11" x 6'7" (4.26 x 2.02)

Built-in wardrobe. uPVC double-glazed window to the front elevation.

SHOWER ROOM 6'7" x 6'2" (2.02 x 1.89)

Matching suite with stone-effect aqua-boarding to the walls and comprising a walk-in shower with waterfall attachment, vanity wash handbasin with storage beneath and a close-coupled WC. Grey heated towel rail. Extractor. Tiled floor. Illuminated wall-mounted mirror.

STORAGE ROOM 6'3" x 5'0" (1.92 x 1.53)

A sizeable area currently housing the consumer unit and meters. Fitted out with shelving and offering useful storage space.

WHITewater COURT

Whitewater Court offers communal facilities including a laundry room, a residents' suite which hosts regular events and guest sleeping arrangements. Outside, the gardens wrap around the building with a rooftop garden and parking.

COUNCIL TAX

Plymouth City Council
Council Tax Band: C

SERVICES

The property is connected to all the mains services: electricity, water and drainage.

Whitewater Court Lease Information

Lease - 125 Years From 2004

Ground Rent - £281.02 payable every 6 months to Blair Estates Ltd

Service Charge - £3,020.30 payable every 6 months to First Port

WHAT3WORDS

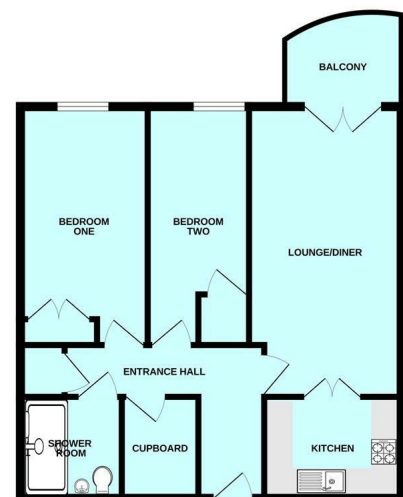
///buddy.fuzzy.native

Area Map



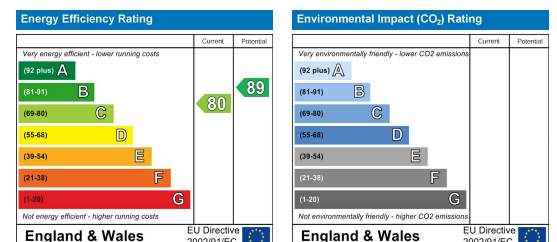
Floor Plans

GROUND FLOOR



Made with Inropics C20X

Energy Efficiency Graph



These particulars, whilst believed to be accurate are set out as a general outline only for guidance and do not constitute any part of an offer or contract. Intending purchasers should not rely on them as statements of representation of fact, but must satisfy themselves by inspection or otherwise as to their accuracy. No person in this firm's employment has the authority to make or give any representation or warranty in respect of the property.