



Cranes Park, KT5

£339,000

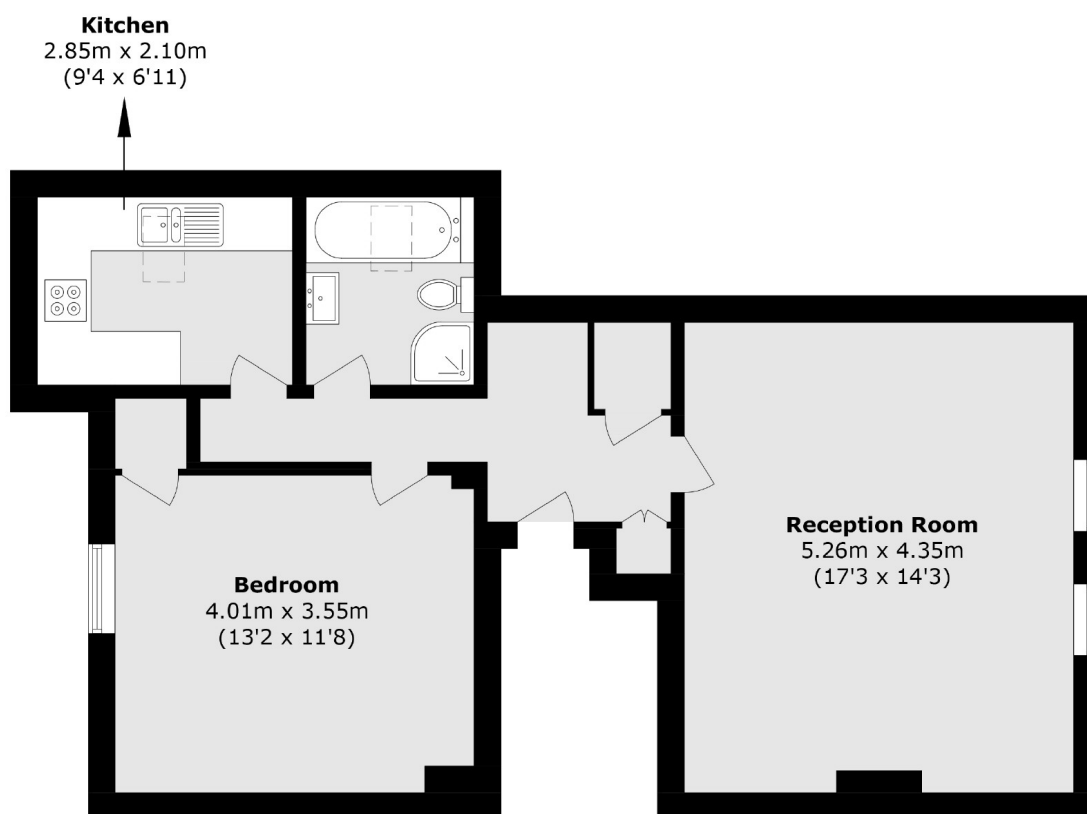
This property has a smart integrated kitchen, a bright and spacious reception room, an immaculate four piece bathroom suite and a south-west facing bedroom. Further benefits include having exclusive access to the loft space and allocated off-street parking.

Cranes Park has everything you need within one mile, including the River Thames, the cafés and restaurants of Surbiton, the shops of Kingston and Surbiton mainline train station with fast trains to Waterloo.

Features

- Large Top Floor Apartment
- One Double Bedroom
- Allocated Parking
- Four Piece Bathroom Suite
- Great Location
- Period Conversion

Cranes Park, Surbiton, KT5



Total area (approx.): 57 sq. m (613.5 sq. ft)