



BUCKINGHAM ROAD, NW10

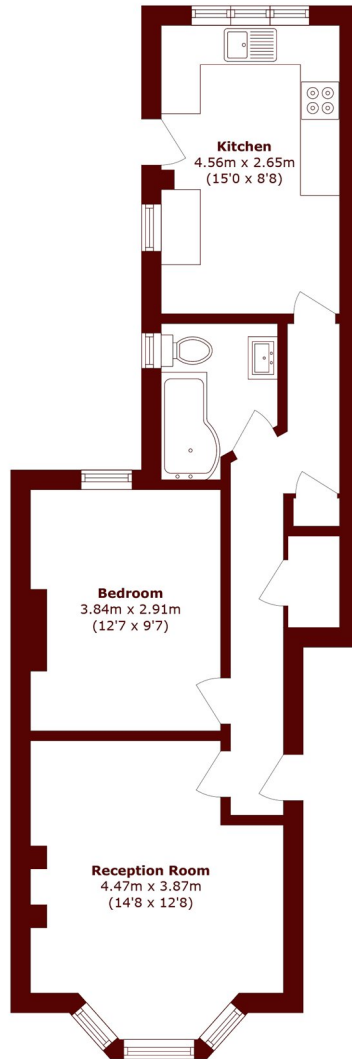
£425,000

This superb, ground floor garden flat is arranged over 561sqft comprising a reception room with bay window and shutters, spacious double bedroom, separate kitchen with direct access to a large private garden and

Spacious Garden Flat
Over 561 sq ft
Separate Kitchen

Modern Finish
Lovely Private Garden
Share Of Freehold

STEP INSIDE BUCKINGHAM ROAD



Total area (approx.): 52.2 sq. m (561.8 sq. ft)

Willesden Green
020 8451 0420

Energy Rating: C We aim to make our particulars both accurate and reliable. However, they are not guaranteed; nor do they form part of an offer or contract. If you require clarification on any points then please contact us, especially if you're traveling some distance to view. Please note that appliances and heating systems have not been tested and therefore no warranties can be given as to their good working order

**MARSH &
PARSONS**