



Monterey Drive, Havant PO9 5TQ

welcome to

Monterey Drive, Havant

Well-presented home on the popular Monterey Drive, close to amenities, transport and schools. Features include a bright lounge, kitchen, additional rear living space, low-maintenance garden, off-road parking and modern bathroom—ideal for families and first-time buyers.

Entrance Hall

Stairs leading to first floor. Door to lounge.

Lounge

Double glazed bay window to front aspect. Carpet flooring, radiator. Under stair storage cupboard, double doors to dining room.

Dining Room

Double glazed window and door to conservatory. Laminate flooring.

Kitchen

Double glazed window to rear aspect. Range of wall and base cupboards and drawers with work surface over, incorporating sink unit with mixer tap over. Space for oven and hob with extractor hood over, space for washing machine, fridge/freezer and dishwasher. Tiled floor, part tiled walls.

Conservatory

UPVC and double glazed with glazed roof. Tiled floor. Double glazed doors leading to rear garden.

First Floor Landing

Storage cupboard. Doors to:

Bedroom One

Double glazed window to front aspect. Built-in wardrobes, carpet flooring, radiator.

Bedroom Two

Double glazed window to rear aspect. Carpet flooring, radiator.

Bedroom Three

Double glazed window to rear aspect. Radiator.

Shower Room

Double glazed window to front aspect. Wet room with space to shower, low level WC and pedestal wash hand basin.

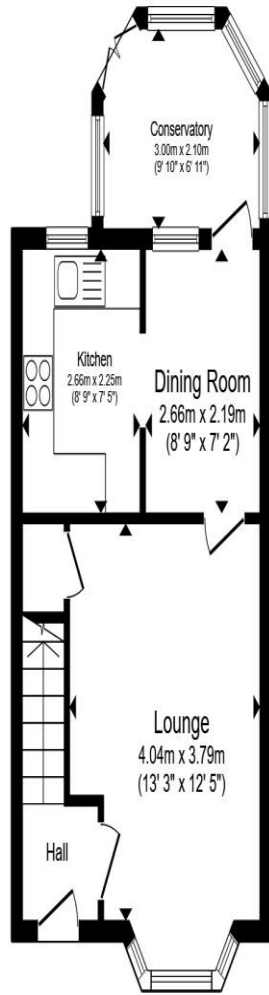
Outside

Front

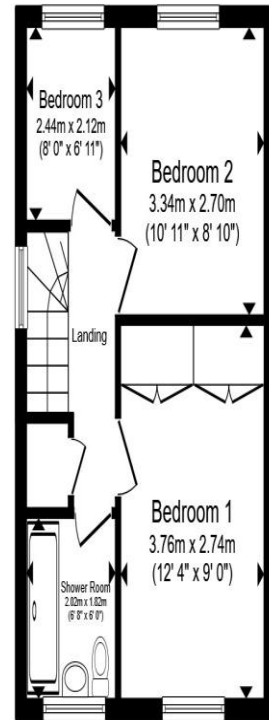
Laid to lawn and off road parking.

Rear Garden

Laid to patio and lawn, enclosed by panel fencing. Garden shed.



Ground Floor



First Floor

Total floor area 68.3 m² (735 sq.ft.) approx

This floor plan is for illustrative purposes only. It is not drawn to scale. Any measurements, floor areas (including any total floor area), openings and orientation are approximate. No details are guaranteed, they cannot be relied upon for any purpose and they do not form part of any agreement. No liability is taken for any error, omission or misstatement. A party must rely upon its own inspection(s). Powered by www.propertybox.io



welcome to
Monterey Drive,
Havant

- Three Bed Semi Detached
- Allocated Parking
- Conservatory
- Quiet Cul-de-Sac Location
- Ideal Family Home

Tenure: Freehold EPC Rating: C
Council Tax Band: C

£310,000



check out more properties at fox-and-sons.co.uk



Property Ref:
WLV109735 - 0002

1. MONEY LAUNDERING REGULATIONS Intending purchasers will be asked to produce identification documentation at a later stage and we would ask for your co-operation in order that there is no delay in agreeing the sale. 2. These particulars do not constitute part or all of an offer or contract. 3. The measurements indicated are supplied for guidance only and as such must be considered incorrect. Potential buyers are advised to recheck measurements before committing to any expense. 4. We have not tested any apparatus, equipment, fixtures or services and it is in the buyers interest to check the working condition of any appliances. 5. Where an EPC, or a Home Report (Scotland only) is held for this property, it is available for inspection at the branch by appointment. If you require a printed version of a Home Report, you will need to pay a reasonable production charge reflecting printing and other costs. 6. We are not able to offer an opinion either written or verbal on the content of these reports and this must be obtained from your legal representative. 7. Whilst we take care in preparing these reports, a buyer should ensure that his/her legal representative confirms as soon as possible all matters relating to title including the extent and boundaries of the property and other important matters before exchange of contracts.



023 9226 2447



Waterlooville@fox-and-sons.co.uk



81B London Road, WATERLOOVILLE,
Hampshire, PO7 7ES



fox-and-sons.co.uk