

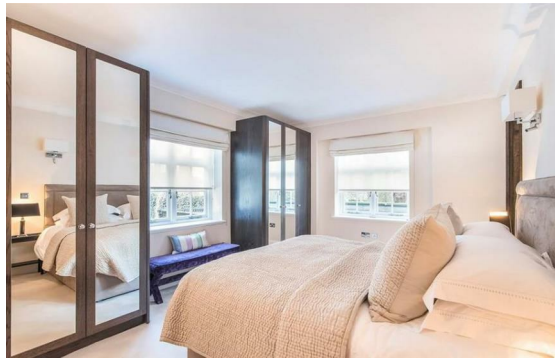


Portsea Place, Paddington, London, W2

Rent £1,435 Per Month

4 Bed | 3 Bath | 1 Reception

Please call us on 020 7724 2233 or email us info@newingtonstates.com to book a viewing.



60 Upper Montagu Street

London

W1H 1SN

020 7724 2233

info@newingtonstates.com

We are pleased to offer for rent this spacious four-bedroom apartment situated in the popular Hyde Park Estate moments away from the open spaces of Hyde Park. Comprising of 4 large bedrooms, three modern bathrooms, massive reception room with beautiful furniture and gorgeous wooden flooring leading into separated fully fitted kitchen with ample storage and great appliances.

The property is excellently located for the Central Line - being only 0.2 miles away from Marble Arch Underground Station.

EPC rating: C

Energy Efficiency Rating: C

Agents Note: Whilst every care has been taken to prepare these particulars, they are for guidance purposes only. All measurements are approximate and are for general guidance purposes only and whilst every care has been taken to ensure their accuracy, they should not be relied upon and potential buyers/tenants are advised to recheck the measurements.

<http://www.newingtonstates.com>