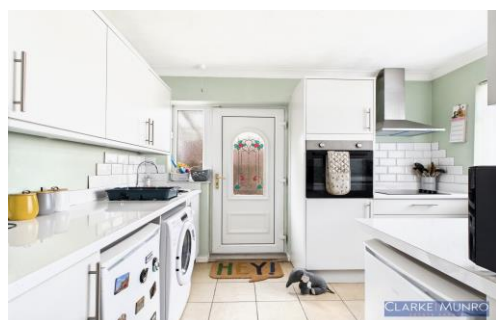


# CLARKE | MUNRO

ESTATE AGENTS  
30 Rudston Avenue, Wolviston Court, TS22 5BN



Price: Offers in the  
Region Of £165,000



01642 361 111  
visit [clarkemunro.com](http://clarkemunro.com) for details

# 30 Rudston Avenue, Wolviston Court, TS22 5BN

## Key Features:



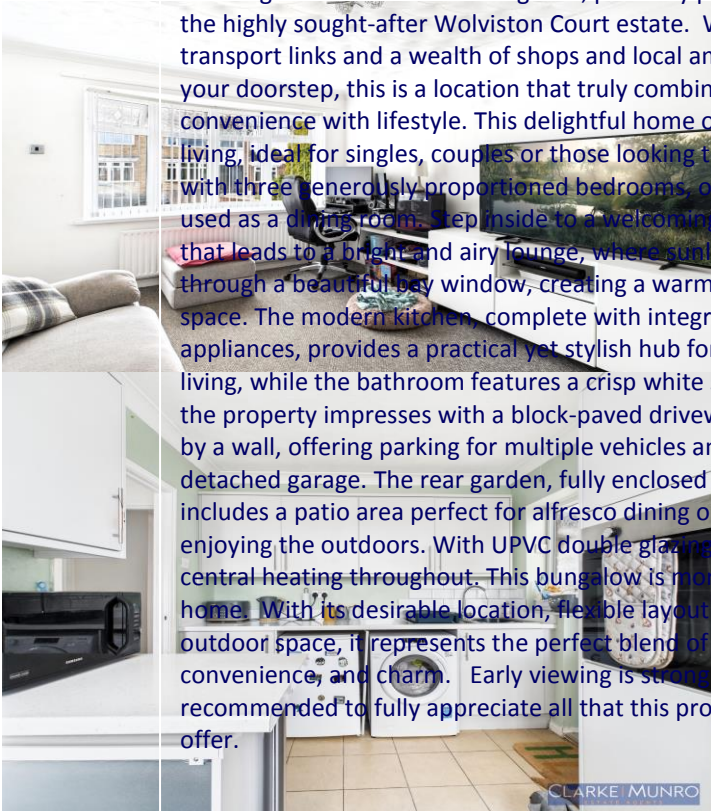
- 'MOORE & CARTWRIGHT' SEMI DETACHED BUNGALOW
- THREE GOOD SIZED BEDROOMS (One currently used as a Dining Room)
- MODERN KITCHEN WITH INTEGRATED APPLIANCES
- UPVC DOUBLE GLAZING / GAS CENTRALLY HEATED VIA A COMBI BOILER



- MODERN FAMILY BATHROOM
- OFF ROAD PARKING FOR NUMEROUS VEHICLES & DETACHED GARAGE

## Property Description:

Clarke Munro are delighted to present this charming 'Moore & Cartwright' semi-detached bungalow, perfectly positioned on the highly sought-after Wolviston Court estate. With excellent transport links and a wealth of shops and local amenities on your doorstep, this is a location that truly combines convenience with lifestyle. This delightful home offers versatile living, ideal for singles, couples or those looking to downsize with three generously proportioned bedrooms, one currently used as a dining room. Step inside to a welcoming entrance hall that leads to a bright and airy lounge, where sunlight streams through a beautiful bay window, creating a warm and inviting space. The modern kitchen, complete with integrated appliances, provides a practical yet stylish hub for day-to-day living, while the bathroom features a crisp white suite. Outside, the property impresses with a block-paved driveway enclosed by a wall, offering parking for multiple vehicles and access to a detached garage. The rear garden, fully enclosed for privacy, includes a patio area perfect for alfresco dining or simply enjoying the outdoors. With UPVC double glazing and gas central heating throughout, this bungalow is more than just a home. With its desirable location, flexible layout and excellent outdoor space, it represents the perfect blend of comfort, convenience, and charm. Early viewing is strongly recommended to fully appreciate all that this property has to offer.



**CLARKE | MUNRO**  
ESTATE AGENTS

TO VIEW: Tel: **01642 36111**

65 Queensway, Stockton-On-Tees, Billingham, TS23 2LU.

[www.clarkemunro.com](http://www.clarkemunro.com)

**CLARKE | MUNRO**  
ESTATE AGENTS



## Certificate

a measure of  
e. The higher  
cient the home  
lls will be.



stitute,  
out res  
is prop  
n or ot  
, and n  
presen



39-54

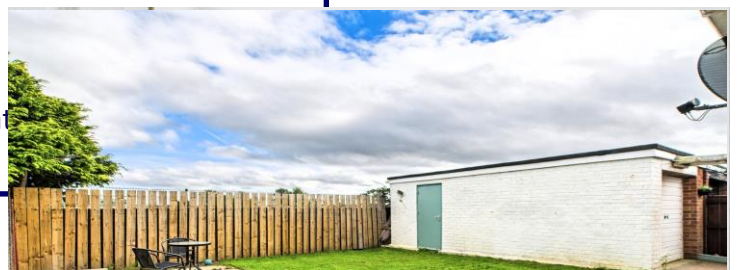
21-38

every property

- Beautifully shot photography
- Accompanied viewings



that



01642 361 111

visit [clarkemunro.com](http://clarkemunro.com) for details