



Addison Way, Hampstead Garden Suburb, NW11
Freehold
£1,399,000



800 finchley road, hampstead garden suburb, london, nw11 7tj

telephone 020 8458 5000 facsimile 020 8209 2068

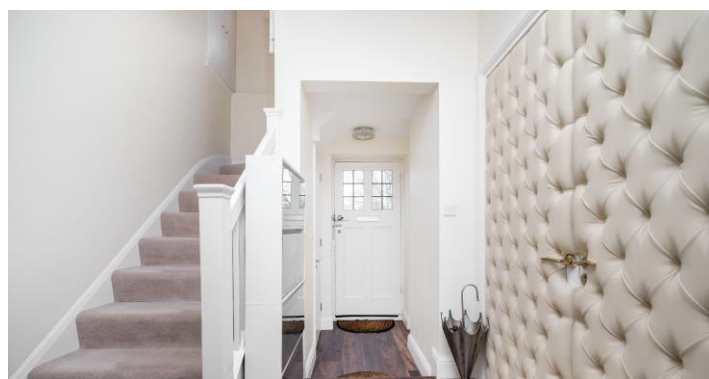
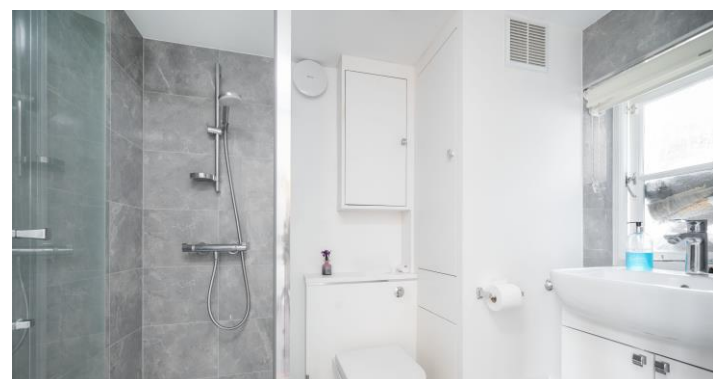
email sales@litchfields.com web litchfields.com

offices also in highgate

This charming double-fronted semi-detached house enjoys a highly convenient position, backing directly onto Littlewood and located close to the shops, cafés, and excellent transport links of both The Market Place and Temple Fortune. The property is presented in excellent internal decorative condition throughout and offers flexible accommodation comprising four/five bedrooms. Notably, the fifth bedroom is situated on the ground floor with an en suite shower room, making it ideal for use as a guest bedroom, study, or family room. Further accommodation includes a lovely main reception room, a well-fitted kitchen, and bright, well-proportioned bedrooms upstairs. To the rear, the house benefits from a wonderful and generously sized south-facing garden, providing a sunny and private outdoor space ideal for family life and entertaining. This is a superb opportunity to acquire a stylish and versatile family home in a sought-after location.



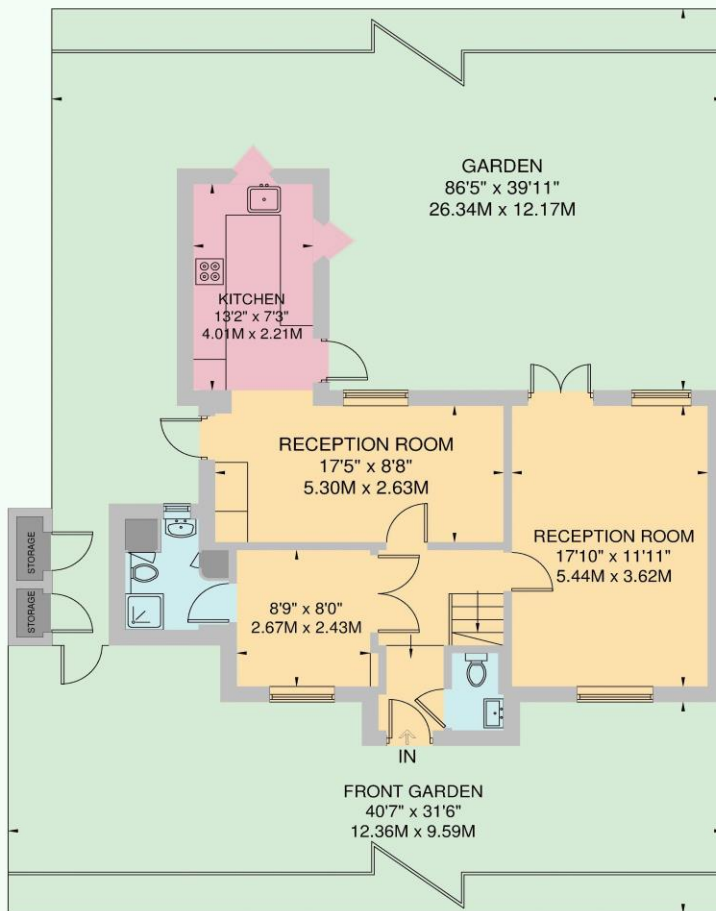
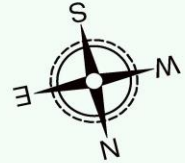
4/5 bedrooms | Lounge | Dining room | Kitchen | En suite bathroom | 3 shower rooms (2 en suite) | Downstairs wc | South facing rear garden



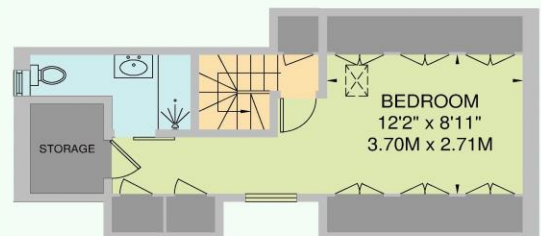


Addison Way, Hampstead Garden, Suburb, NW11

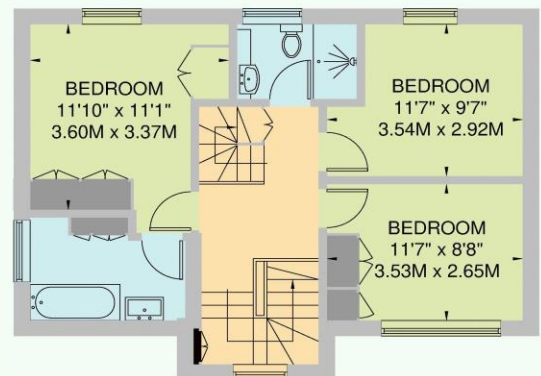
Approximate Gross Internal Area
150.0 sq m / 1614 sq ft



GROUND FLOOR



SECOND FLOOR



FIRST FLOOR

All Measurements are approximate and for identification guideline purposes only, not to scale.
Compliant with the RICS code of measuring practice

For similar properties please visit our website www.litchfields.com

Or call us on 0208 458 8000