



Uffington Road, SE27 | £800,000

02087029888

westnorwood@pedderproperty.com

pedder
We live local



In General

- Four bedrooms
- Chain free
- Great location
- Two bathrooms
- Garage
- Semi detached

In Detail

A charming four-bedroom 1930s home situated on a highly sought-after residential road in SE27, offering generous proportions and excellent potential for further enhancement.

The property has undergone renovation, presenting a fantastic opportunity for buyers to personalise and complete to their own specification. The ground floor comprises a spacious front reception room, beautifully enhanced by a characterful bay window that frames views of the attractive magnolia tree. To the rear, a large eat-in kitchen provides ample storage, extensive worktop space, and plenty of room for dining and entertaining. The adjoining conservatory leads out to a, westerly-facing garden extending over 33 ft, ideal for enjoying afternoon and evening sun. There is also access to a garage, offering useful storage or scope for conversion, subject to the necessary consents.

On the first floor, there are two generous double bedrooms, including a particularly bright front room with a bay window, along with a third, smaller bedroom that would suit a nursery, study, or home office. This level is completed by a well-proportioned family bathroom, offering clear potential for modernisation.

The loft has been converted to create an impressive principal bedroom, featuring a Juliet balcony with elevated views over the garden. The space is further enhanced by a well-presented en-suite bathroom and useful eaves storage. Some minor cosmetic finishing works remain, allowing the incoming owner to add their own final touches.

Uffington Road is one of West Norwood's most desirable addresses, known for its friendly community and close proximity to excellent schools, local amenities, cafés, restaurants, and transport links. The property is ideally situated within easy reach of both West Norwood and Tulse Hill stations, offering fast and convenient connections to London Bridge, Victoria, and the City.

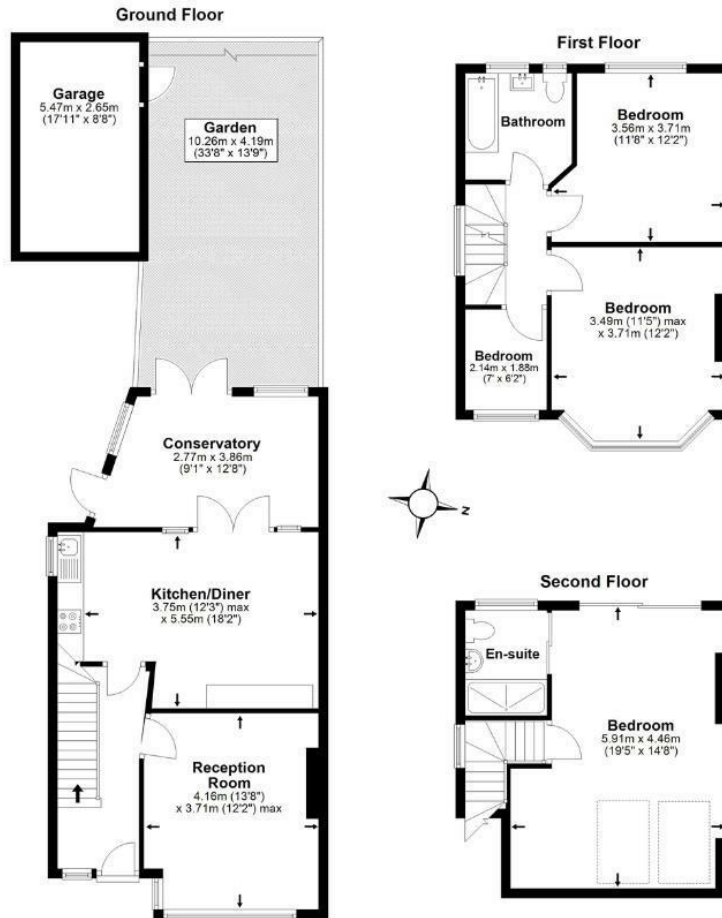
EPC: D | Council Tax Band: E



Floorplan

Uffington Road, SE27

Total* = 125.1 sq. m / 1346.5 sq. ft
 Second Floor = 30.1 sq. m / 323.6 sq. ft
 First Floor = 40.7 sq. m / 437.6 sq. ft
 Ground Floor = 54.4 sq. m / 585.3 sq. ft
 ☐ = Reduced head room below 1.5m



*All measurements are approximate and do not include eaves space. The plans are for representation purposes only as defined by RICS - 'Code of Measurement Practice'. The plans are not to scale. Please personally check all sizes, dimensions, shapes and compass bearings before making any decisions reliant upon them. Copyright The Pedder Group © 2026.

Energy Efficiency Rating		Current	Potential
Very energy efficient - lower running costs			
102 plus) A			81
81-101) B			
69-80) C			
55-68) D		67	
39-54) E			
21-38) F			
1-20) G			
Not energy efficient - higher running costs			
England & Wales		EU Directive 2002/91/EC	

Pedder Property Ltd trading as Pedder for themselves and for the vendor/landlord of this property whose agents they are, give notice that (1) these particulars do not constitute any part of an offer or contract, (2) all statements contained within these particulars are made without responsibility on the part of Pedder or the vendor/landlord, (3) whilst made in good faith, none of the statements contained within these particulars are to be relied upon as a statement of representation or fact, (4) any intending purchaser/tenant must satisfy him/herself by inspection or otherwise as to the correctness of each of the statements contained within these particulars, (5) the vendor/landlord does not make or give either Pedder or any person in their employment any authority to make or give representation or warranty whatsoever in relation to this property.