



Langham Gardens, W13

£425,000

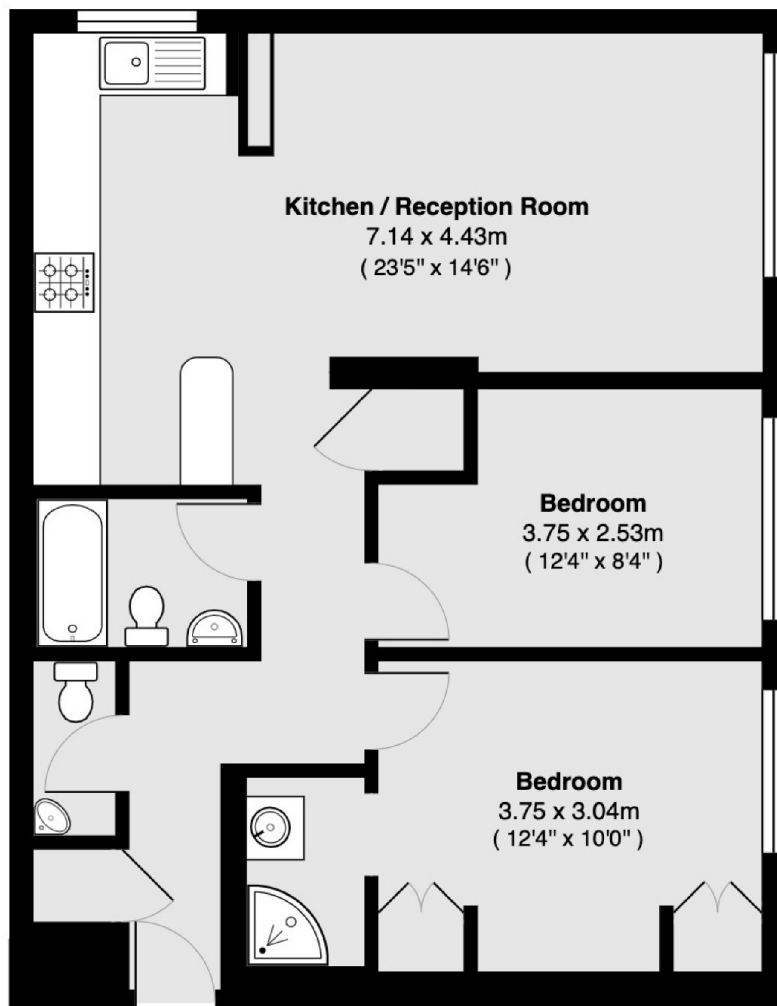
This two double bedroom, two bathroom, top floor apartment is set within a popular residential development. Offered with no onward chain and in good condition throughout, the property also has a long underlying lease and a separate garage.

Langham Gardens is conveniently located between both Ealing Broadway and West Ealing stations with the new Elizabeth Line, Central and District tube lines, and National Rail services.

Features

- Two Bedrooms
- Two Bathrooms
- Garage
- Long Lease
- No Onward Chain
- Close To Transport

Langham Gardens, London, W13



Total area 65.2 sq m (approx) (702 sq ft approx)

Dexters

Ealing
2 New Ealing Broadway
London
W5 2NU
Sales
020 8810 0909

Energy Rating: D. We aim to make our particulars both accurate and reliable. However they are not guaranteed; nor do they form part of an offer or contract. If you require clarification on any points then please contact us, especially if you're traveling some distance to view. Please note that appliances and heating systems have not been tested and therefore no warranties can be given as to their good working order.

 **RICS** | Regulated
Estate Agent
and Letting Agent

dexters.co.uk