

Directions

Viewings

Viewings by arrangement only. Call 02085042440 to make an appointment.

EPC Rating

C

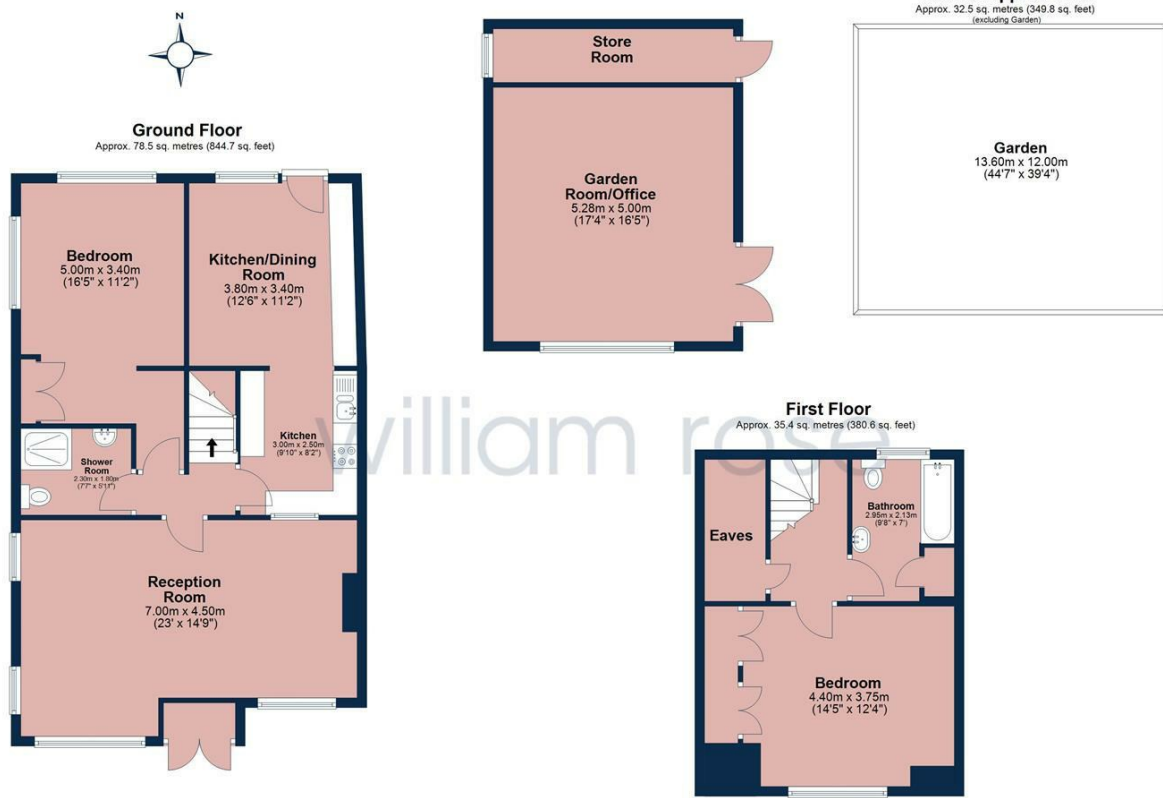
Energy Efficiency Rating		Current	Potential
Very energy efficient - lower running costs			
(92 plus) A			
(81-91) B			
(69-80) C		69	79
(55-68) D			
(39-54) E			
(21-38) F			
(1-20) G			
Not energy efficient - higher running costs			
England & Wales		EU Directive 2002/91/EC	



5 Cherrydown Close, London, E4 8DY

£585,000

- Two bedroom semi-detached house
- Ground floor bedroom with adjacent bathroom
- Large open-plan kitchen/diner ideal for entertaining
- Useful outbuilding offering potential for home office, gym or storage
- Close to local shops, schools and transport links
- Spacious and versatile layout arranged over two floors
- First floor bedroom with separate bathroom
- Separate front reception room with excellent natural light
- Quiet residential turning in sought-after Chingford
- Potential to further modernise or extend (STPP)



Total area: approx. 146.3 sq. metres (1575.2 sq. feet)

All measurements have been taken as a guide to prospective buyers only and are not precise. This plan is for illustrative purposes only and no responsibility for any error, omission or misstatement. The services, systems and appliances shown have not been tested and no guarantee as to their operability or efficiency can be given. Measurements may have been taken from the widest area and may include wardrobe/cupboard space. No guarantee is given to any measurements including total areas. Buyers are advised to take their own measurements.

© @modephotouk | www.modephoto.co.uk
Plan produced using Planipol

Cherrydown Close

5 Cherrydown Close, London E4 8DY

Semi-detached house with a driveway and a large garden in Cherrydown Close. Two bedrooms, two bathrooms bungalow style property with a spacious kitchen/diner, near shops, restaurants and transport links.

Situated on the popular Cherrydown Close in Chingford, this well-proportioned two bedroom semi-detached home offers flexible accommodation perfectly suited to modern family living.

The property benefits from a spacious and practical layout, featuring a bright separate front reception room and a large kitchen/diner to the rear, creating an excellent space for both everyday living and entertaining.

A standout feature of the home is the versatile bedroom and bathroom arrangement, with one bedroom and bathroom conveniently located on the ground floor, while the first floor provides a further double bedroom and additional bathroom — ideal for guests, multi-generational living or those requiring ground floor accommodation.

Externally, the property offers a driveway providing off street parking, a generous rear garden, and a substantial outbuilding, ideal for use as a home office, gym, workshop, or additional storage space.

Cherrydown Close is a quiet residential cul-de-sac positioned within easy reach of Chingford Mount amenities, local parks, well-regarded schools, and excellent transport connections into Central London.



Council Tax Band: D

