

33 Montcliffe Crescent, Whalley Range, Manchester, M16 8GR



JP&Brimelow
ESTATE AGENTS

Offers In The Region Of £300,000


 3  1  1  C

VIDEO TOUR AVAILABLE A modern, THREE BEDROOM, semi- detached property positioned on this highly regarded residential road off Spring Bridge Road. IN NEED OF COSMETIC UPDATING THROUGHOUT. Within a twenty-minute walk of the Metrolink Station at Morrisons on Wilbraham Road which gives you direct access into the City Centre/Media City, good secondary schools on your doorstep, Whalley Range cricket and tennis club are located nearby on Kingsbrook Road, close to universities, hospitals, and Manchester International Airport. The property consists of a porch leading to a lounge with stairs leading to the first floor and a fitted kitchen/dining room to the ground floor with access out into the rear enclosed lawned garden. Whilst to the first floor there is a landing leading to three bedrooms and a three-piece bathroom. The property benefits from built in wardrobes to the two larger bedrooms, is warmed by gas fired central heating, a driveway providing off road parking and a rear enclosed lawned garden with a useful detached garage. OFFERED WITH NO VENDOR CHAIN.





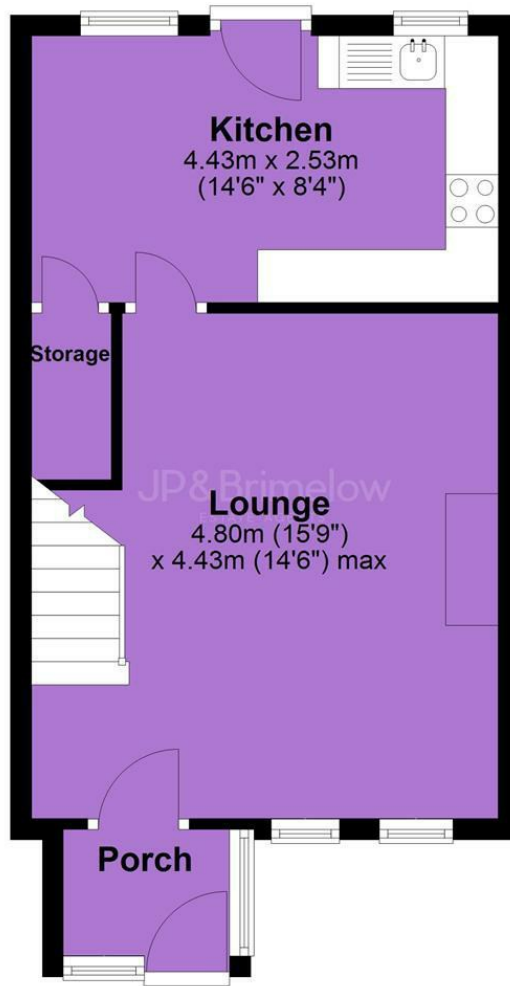
EPC Chart

Energy Efficiency Rating		
	Current	Potential
Very energy efficient - lower running costs		
(92 plus) A		
(81-91) B		85
(69-80) C	71	
(55-68) D		
(39-54) E		
(21-38) F		
(1-20) G		
Not energy efficient - higher running costs		
England & Wales	EU Directive 2002/91/EC 	

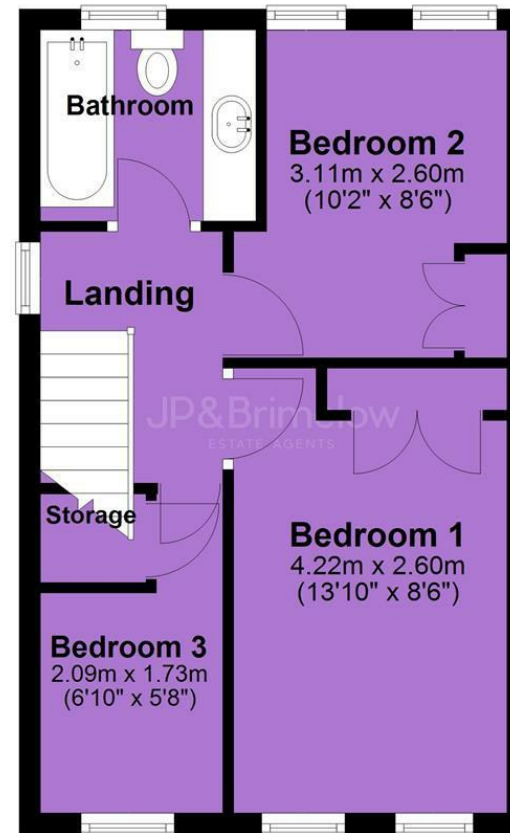


Tenure: **Leasehold** Council Tax Band: **C**

Ground Floor



First Floor



JP & Brimelow Estate Agents Ltd
430 Barlow Moor Road, Manchester, M21 8AD
Tel: 0161 8822233
E: sales@jpbrimelow.co.uk www.jpandbrimelow.co.uk



JP & Brimelow
ESTATE AGENTS

NOTICE: JP & Brimelow Estate Agents Ltd for themselves and for the vendors or lessors of this property whose agents they are give notice that:

- (i) the particulars are set out as a general outline only for the guidance of intending purchasers or lessees, and do not constitute, nor constitute part of, an offer or contract;
- (ii) all descriptions, dimensions, references to the condition and necessary permissions for use and occupation, and other details are given in good faith and are believed to be correct but any intending purchasers or tenants should not rely on them as statements or representations of fact but must satisfy themselves by inspection or otherwise as to the correctness of each of them;
- (iii) no person in the employment of JP & Brimelow Estate Agents Ltd has any authority to make or give any representation or warranty whatever in relation to this property.

jpandbrimelowestateagents

@jpandbrimelow