



Guide Price
£130,000

Leasehold

1x  1x  1x 

**Haig Gardens,
Gravesend, Kent, DA12**

OVER 60?

Secure this property
for up to **59% less!**

Wards
Helping you move forwards



Main features

- 2 allocated parking spaces
- Long lease
- Walking distance to Gravesend town centre and train station
- No ground rent
- Perfect for first time or investment buyers

Accommodation

FIRST FLOOR

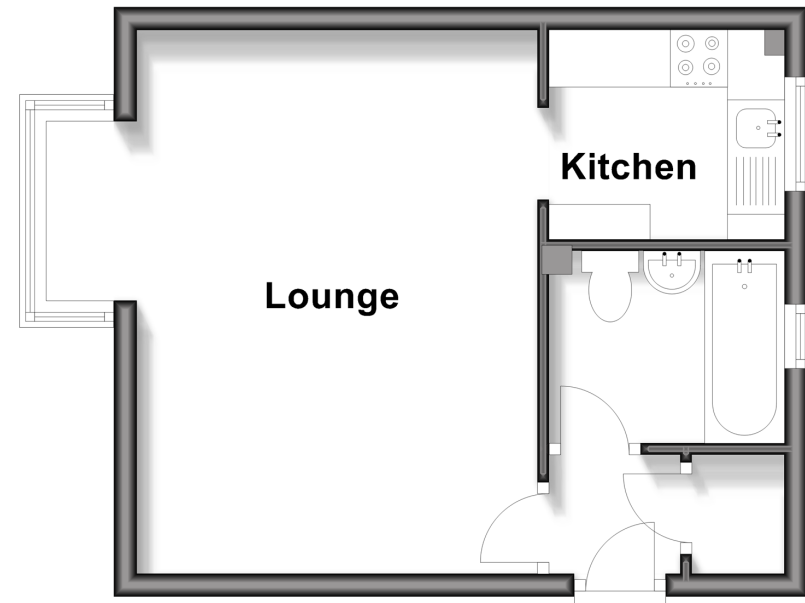
Entrance Hall
 Lounge: 15'7 x 11'6 (4.75m x 3.51m)
 Kitchen : 6'9 x 6'0 (2.06m x 1.83m)
 Bathroom

OUTSIDE

2 Allocated Parking Spaces
 Communal Garden

First Floor

Approx. 27.6 sq. metres (296.7 sq. feet)



Call Gravesend - 01474 352417 ■ wardsof Kent.co.uk

- Flying freehold affects part of this property, please contact us before proceeding
- Legal advice should be taken to verify fixtures/fittings, planning, alterations and/or lease details
- Through a Homewise Home For Life Plan people aged 60+ can secure this property for up to 59% less, by purchasing a Lifetime Lease

- The seller is a person connected with Wards as defined in the Estate Agents Act 1979
- Appliances & services are untested, dimensions are approximate and floor plans are not to scale



18171755/20260119/KG/YD