



STOCKWELL GARDENS, SW9

£520,000

- Three bedrooms
- Separate reception
- Modern kitchen
- Contemporary finish
- Good transport links
- Energy rating: C





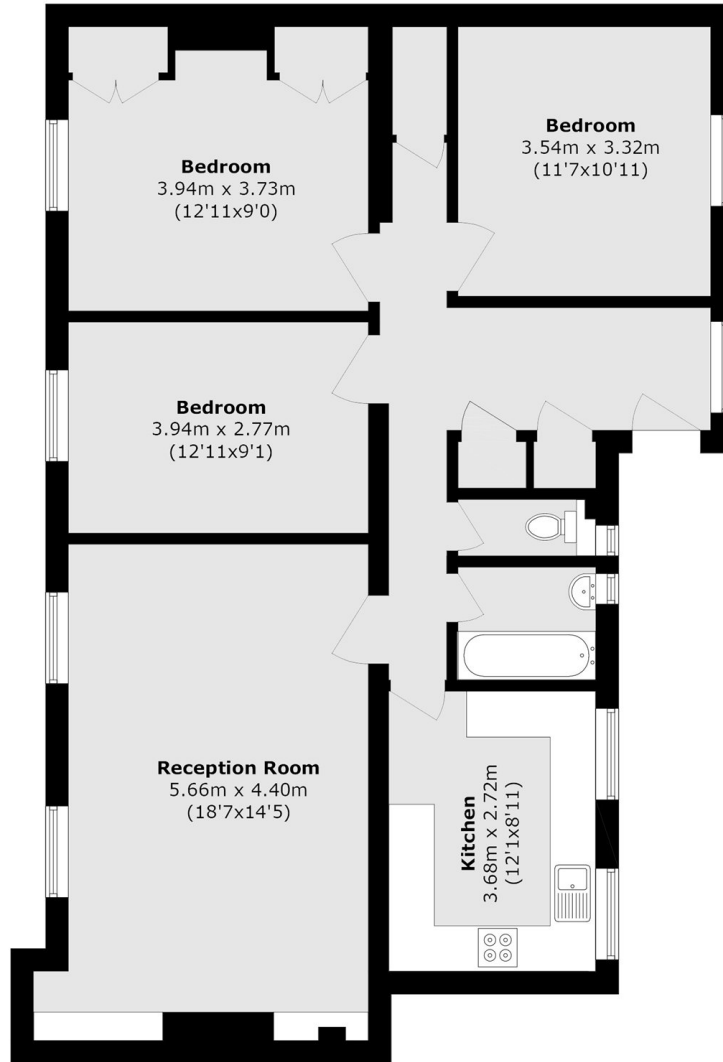
ABOUT THE HOME

A beautifully refurbished three bedroom first floor purpose built flat offering over 1000 sq ft of accommodation and conveniently located close to transport links.

Stockwell Gardens is situated close to Stockwell (Northern & Victoria lines) Underground station (0.3 miles) as well as numerous bus routes linking to the City and West End. The shops, cafés and recreational amenities of Clapham High Street and Brixton are also close at hand.







Total area (approx.): 98.0 sq. m (1055.0 sq. ft)

JACKSONS CLAPHAM

73 Abbeville Road, London,
SW4 9JN

Sales: 020 8487 3177

Lettings: 020 8487 3178

Energy Rating: C We aim to make our particulars both accurate and reliable. However they are not guaranteed; nor do they form part of an offer or contract. If you require clarification on any points then please contact us, especially if you're traveling some distance to view. Please note that appliances and heating systems have not been tested and therefore no warranties can be given as to their good working order.