



Oak Park Gardens, Southfields, London, SW19 6AR

Guide Price **£925,000**

Located in a highly regarded private cul-de-sac in Southfields, this modern three-bedroom, two-bathroom semi-detached home offers stylish and well-balanced family living. The property features three well-proportioned bedrooms, including a principal with en suite, and a bright open-plan kitchen/dining and reception room opening onto a private west-facing garden. Ideally positioned close to highly sought-after local schools and excellent transport links, including Southfields tube station (District Line) with direct access to Central London, as well as easy access to the A3 and local bus routes, this is a superb opportunity in a prime location.

- Semi-Detached House in Cul de Sac Location
- Bright and Spacious Lounge
- Family Bathroom & Downstairs W/c
- Garage and Allocated Off Street Parking
- EPC Rating - C
- Superb Open Plan Kitchen/Dining Room
- Three Bedrooms (Principle Bedroom with en Suite)
- West Facing Rear Garden
- Excellent Transport Links & Sought-After Schools
- Freehold (Service Charge 31/3/25 - 31/3/26: £409.41)

Bedrooms: 3 | Bathrooms: 2 | Receptions: 2



Bedrooms: 3 | Bathrooms: 2 | Receptions: 2

REF: SL1517 Situated within a highly regarded private cul-de-sac in the ever-popular and family-oriented district of Southfields, this modern three-bedroom, two-bathroom semi-detached residence offers well-balanced, contemporary accommodation ideally suited to family living.

Beautifully presented throughout, the property provides a bright open-plan kitchen/dining room and reception area with doors opening directly onto a private west-facing garden, creating an excellent space for both everyday living and entertaining. Two of the bedrooms are generous doubles with fitted wardrobes, including a principal bedroom with en suite, complemented by a well-appointed family bathroom.

Additional benefits include a private garage, off-street parking, and a practical lean-to/utility room.

The property is conveniently located for a number of highly regarded local schools and excellent transport links, with Southfields tube station (District Line) providing direct access to Central London. There is also easy access to the A3 and a variety of local bus routes serving the surrounding area.

An excellent opportunity to acquire a well-maintained home in a prime Southfields location. Early viewing is strongly recommended.



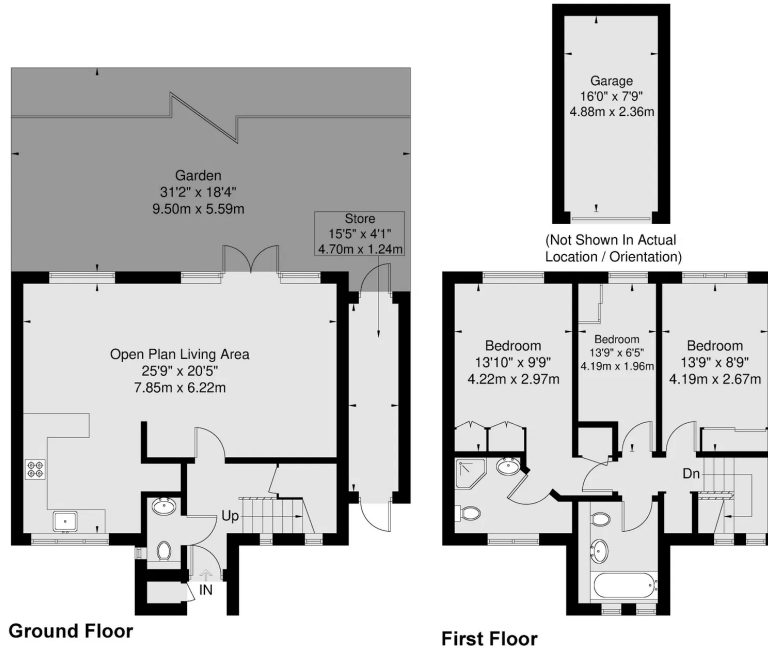


Sam Lloyd

53 Belfield Road West Ewell Surrey KT19 9TF

Oak Park Gardens

Approx Gross Internal Area
 Ground Floor = 50.8 Sq m / 546 Sq Ft
 First Floor = 52.5 Sq m / 565 Sq Ft
 Garage = 11.5 Sq m / 123 Sq Ft
 Store = 5.8 Sq m / 62 Sq Ft
 Total = 120.6 Sq m / 1296 Sq Ft



Viewmedia @ 2026
 Viewmedia.co.uk
 Whilst every attempt has been made to ensure the accuracy of this floor plan, measurements of doors, windows and rooms are approximate and no responsibility is taken for any error or omission. This illustration is for identification purpose only. Not drawn to scale, unless stated. Dimensions shown are to the nearest 3" and are to the points indicated by the arrow heads.

07850 976 200

sam.lloyd@exp.uk.com

<https://samllloyd.exp.uk.com>

Energy Efficiency Rating		Current	Potential
<i>Very energy efficient – lower running costs</i>			
(92 plus) A			
(81-91) B			
(69-80) C		71	75
(55-68) D			
(39-54) E			
(21-38) F			
(1-20) G			
<i>Not energy efficient – higher running costs</i>			
England & Wales	EU Directive 2002/91/EC		