



Taverham Road, Taverham Norwich NR8 6SX

welcome to

Taverham Road, Taverham Norwich

Nestled on the verdant northwestern fringe of Norwich, Taverham is the goldilocks zone you've been searching for, whilst enjoying the sound of birdsong and the rustle of the Wensum Valley, yet close enough that you're never more than a twenty-minute drive to historic cobbled streets of Norwich city.



Accommodation

Set in the heart of sought-after Taverham, this detached two-bedroom bungalow is a masterclass in peaceful living. Wake up to sweeping field views right at your doorstep, all while staying connected to the village's best amenities just minutes away. Inside, a sensible design meets airy comfort, featuring a light-filled living room and a generous recently upgraded kitchen/diner. The exterior is equally impressive, offering a landscaped rear garden, a handy utility-integrated garage, and generous parking. With modern essentials like gas central heating and double glazing already in place, this home is a rare, move-in-ready gem.

Don't miss out on this rare opportunity to buy in this sought after location - Call the office to book your viewing today!

Entrance Hall

External entrance door opening to side aspect, further leading into hallway which gives access to both bedrooms, kitchen/diner, living room and bathroom. Laminate wood flooring.

Living Room

Carpeted, feature electric fireplace with hearth, and upvc double glazed window to front aspect.

Bedroom One

Built in wardrobes and store cupboards, carpeted and upvc double glazed window to rear aspect.

Bedroom Two

Upvc double glazed window to side aspect, carpeted, built in store cupboard, and radiator.

Bathroom

Suite comprising walk in shower, panelled bath with shower head, partially tiled walls, tiled flooring, wc, pedestal hand wash basin and two upvc double glazed windows to side aspect.

Kitchen/Dining Room

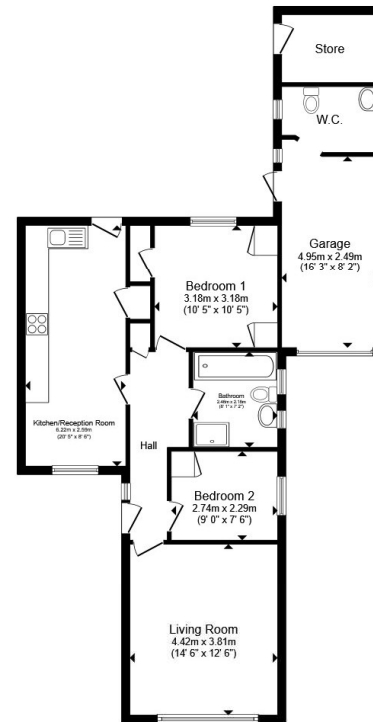
Newly fitted kitchen with a comprehensive range of wall and base units with work surfaces over, integrated eye level oven and electric hob with extractor fan, integrated appliances to also include; fridge freezer, washing machine, and tumble dryer, radiator, composite sink and drainer, and inset ceiling spot lights, store cupboard, upvc double glazed window and external entrance door opening to rear aspect.

Garage

With electric door and gives access to the wc which offers, toilet, wash hand basin and upvc double glazed window to side aspect.

Outside

The front garden is laid to lawn, well-tended and mature with a variety of shrubs and planters. A driveway provides off-road parking and further leads to the garage. This is complemented to the rear, which is also laid to lawn, split level and separated by brick walling, as well as interspersed with a variety of plants and shrubbery. There is also patio area within the garden and access to the garage and shed.



Total floor area 86.7 m² (933 sq.ft.) approx

This floor plan is for illustrative purposes only. It is not drawn to scale. Any measurements, floor areas (including any total floor area), openings and orientation are approximate. No details are guaranteed, they cannot be relied upon for any purpose and they do not form part of any agreement. No liability is taken for any error, omission or misstatement. A party must rely upon its own inspection(s). Powered by www.propertybox.io



view this property online williamhbrown.co.uk/Property/HEL103524




william
h brown

welcome to

Taverham Road, Taverham Norwich

- Detached Bungalow
- Two Bedrooms
- Prime Village Location
- Open Plan Kitchen/Dining Room
- Garage + Driveway Providing Off-Road Parking

Tenure: Freehold EPC Rating: D
Council Tax Band: C

offers in excess of

£350,000



Please note the marker reflects the postcode not the actual property

view this property online williamhbrown.co.uk/Property/HEL103524



Property Ref:
HEL103524 - 0002

1. MONEY LAUNDERING REGULATIONS Intending purchasers will be asked to produce identification documentation at a later stage and we would ask for your co-operation in order that there is no delay in agreeing the sale. 2. These particulars do not constitute part or all of an offer or contract. 3. The measurements indicated are supplied for guidance only and as such must be considered incorrect. Potential buyers are advised to recheck measurements before committing to any expense. 4. We have not tested any apparatus, equipment, fixtures or services and it is in the buyers interest to check the working condition of any appliances. 5. Where an EPC, or a Home Report (Scotland only) is held for this property, it is available for inspection at the branch by appointment. If you require a printed version of a Home Report, you will need to pay a reasonable production charge reflecting printing and other costs. 6. We are not able to offer an opinion either written or verbal on the content of these reports and this must be obtained from your legal representative. 7. Whilst we take care in preparing these reports, a buyer should ensure that his/her legal representative confirms as soon as possible all matters relating to title including the extent and boundaries of the property and other important matters before exchange of contracts.

William H Brown is a trading name of Sequence (UK) Limited which is registered in England and Wales under company number 4268443, Registered Office is Cumbria House, 16-20 Hockliffe Street, Leighton Buzzard, Bedfordshire, LU7 1GN. VAT Registration Number is 500 2481 05.


william h brown



01603 487888



hellesdon@williamhbrown.co.uk



303 Reepham Road, Hellesdon, NORWICH,
Norfolk, NR6 5AD



williamhbrown.co.uk