

TO LET



Clayworks, Hanley

2 Bedrooms, 2 Bathroom, Apartment

£1,100 pcm



Clayworks, Hanley

2 Bedrooms, 2 Bathroom

£1,100 pcm

STUNNING 9TH FLOOR 2 BEDROOM FLAT. Martin and co offer for rent this stunning 9th floor furnished apartment located in the highly sought after Clayworks development which is in the heart of Hanley. The block offers a daytime residential service manager, sun terrace, a multi use function room and a private garden area and has lifts to all floors. The property comprises an open plan lounge kitchen and dining room, 2 double bedrooms, en suite shower room and a Jack and Jill bathroom.

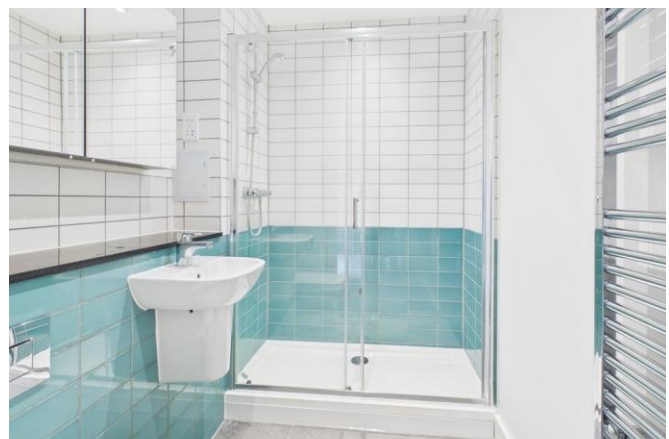
Date available: 13th June 2026

Deposit: £1,269

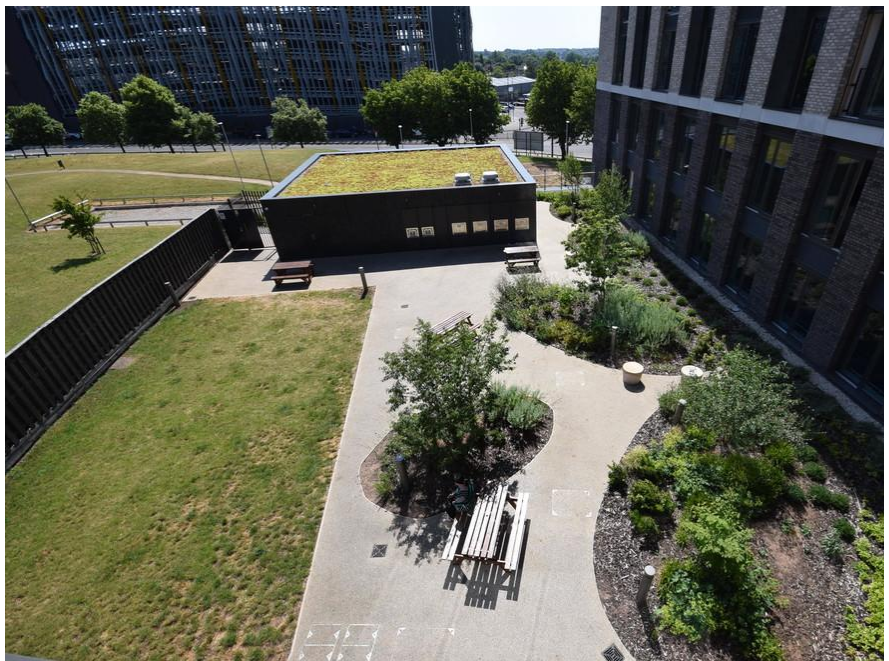
Furnished

Council Tax band: B

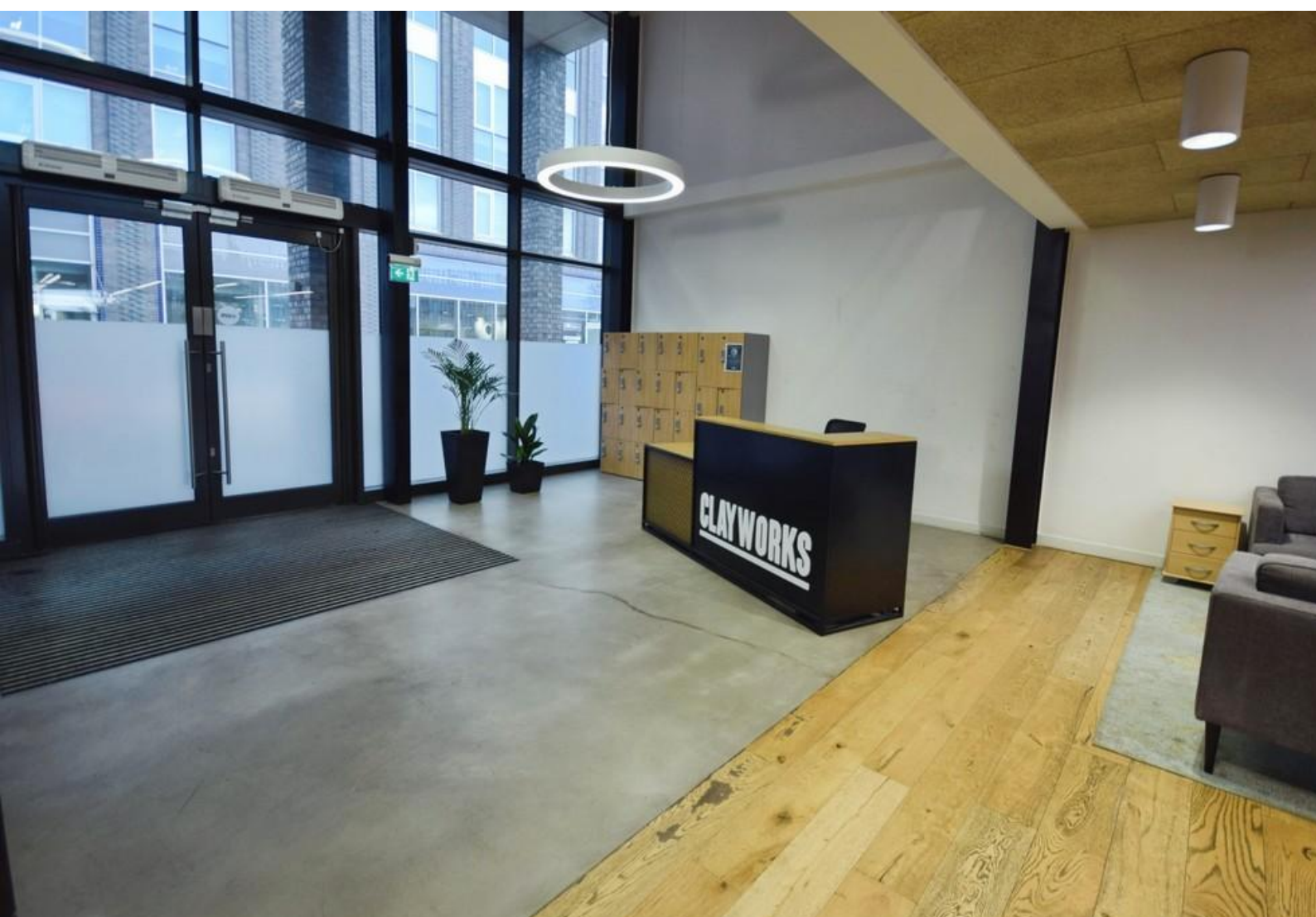
- 9th Floor Apartment
- Furnished Flat
- 2 Double Bedrooms
- 2 Bathrooms
- Close To The Town Centre
- Close To Bus Routes
- Council Tax Band B







Energy Efficiency Rating		
	Current	Potential
Very energy efficient - lower running costs		
(92+) A		
(81-91) B	84	84
(69-80) C		
(55-68) D		





Martin & Co Stoke on Trent

12 Albion Street • Stoke-On-Trent • ST1 1QH

T: 01782 262880 • E: stokeontrent@martinco.com

01782 262880

<http://www.martinco.com>



Accuracy: References to the Tenure of a Property are based on information supplied by the Seller. The Agent has not had sight of the title documents. A Buyer is advised to obtain verification from their Solicitor. Items shown in photographs including but not limited to carpets, fixtures and fittings are not included unless specifically mentioned within the sales particulars. They may however be available by separate negotiation. Buyers must check the availability of any property and make an appointment to view before embarking on any journey to see a property. No person in the employment of the agent has any authority to make any representation about the property, and accordingly any information given is entirely without responsibility on the part of the agents, sellers(s) or lessors(s). Any property particulars are not an offer or contract, nor for part of one. **Sonic / laser Tape:** Measurements taken using a sonic / laser tape measure may be subject to a small margin of error. **All Measurements:** All Measurements are Approximate. **Services Not tested:** The Agent has not tested any apparatus, equipment, fixtures and fittings or services and so cannot verify that they are in working order or fit for the purpose. A Buyer is advised to obtain verification from their Solicitor or Surveyor.