



Connells

Eaton Valley Road
Luton



Property Description

Located in the highly sought-after Stopsley area on Eaton Valley Road, this well-presented three-bedroom semi-detached home offers spacious and versatile accommodation ideal for families.

The ground floor features a welcoming entrance hallway leading through to a bright and generously sized lounge, which flows seamlessly into the rear garden, creating an excellent space for both relaxing and entertaining. A separate dining room provides additional living space, while the fitted kitchen is complemented by a useful utility room, adding practicality to the layout.

Upstairs, the property offers three well-proportioned bedrooms and a modern family bathroom, all accessed from a central landing.

Externally, the home benefits from a private rear garden, perfect for outdoor enjoyment.

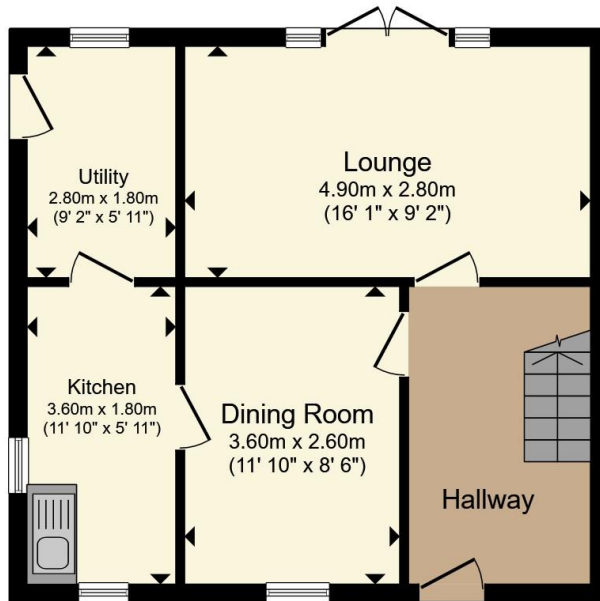
Positioned within easy reach of well-regarded schools, local amenities, and transport links, this property presents an excellent opportunity for buyers seeking a comfortable home in a popular residential location.



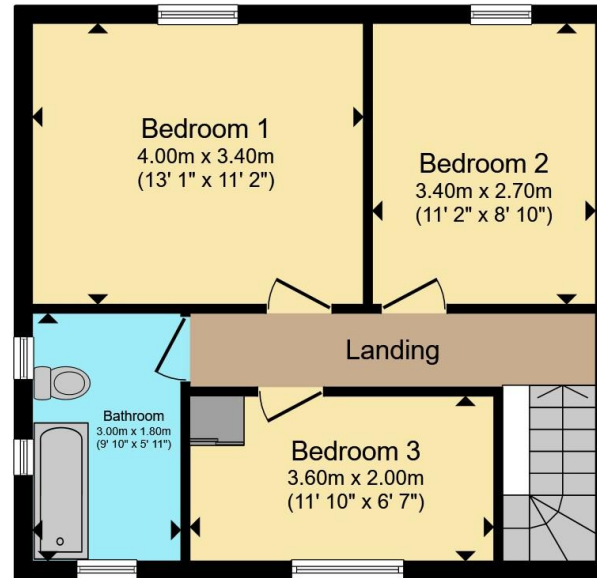








Ground Floor



First Floor

Total floor area 88.4 m² (952 sq.ft.) approx

This floor plan is for illustrative purposes only. It is not drawn to scale. Any measurements, floor areas (including any total floor area), openings and orientation are approximate. No details are guaranteed, they cannot be relied upon for any purpose and they do not form part of any agreement. No liability is taken for any error, omission or misstatement. A party must rely upon its own inspection(s). Powered by www.propertybox.io



To view this property please contact Connells on

T 01582 737 069
E stopsley@connells.co.uk

Jansel House Parade 656 Hitchin Road Stopsley
LUTON LU2 7XH

EPC Rating: Council Tax
Awaited Band: C

Tenure: Freehold

view this property online connells.co.uk/Property/STP308459



1. MONEY LAUNDERING REGULATIONS Intending purchasers will be asked to produce identification documentation at a later stage and we would ask for your co-operation in order that there will be no delay in agreeing the sale. 2. These particulars do not constitute part or all of an offer or contract. 3. The measurements indicated are supplied for guidance only and as such must be considered incorrect. Potential buyers are advised to recheck measurements before committing to any expense. 4. We have not tested any apparatus, equipment, fixtures, fittings or services and it is in the buyers interest to check the working condition of any appliances.

Connells Residential is registered in England and Wales under company number 1489613, Registered Office is Cumbria House, 16-20 Hockliffe Street, Leighton Buzzard, Bedfordshire, LU7 1GN. VAT Registration Number is 500 2481 05.

See all our properties at www.connells.co.uk | www.rightmove.co.uk | www.zoopla.co.uk

Property Ref: STP308459 - 0002