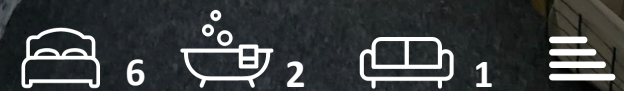




Flat 4 5 Wootton Mount
, Bournemouth, BH1 1PJ

£660 Per month



Flat 4 5 Wootton Mount

, Bournemouth, BH1 1PJ

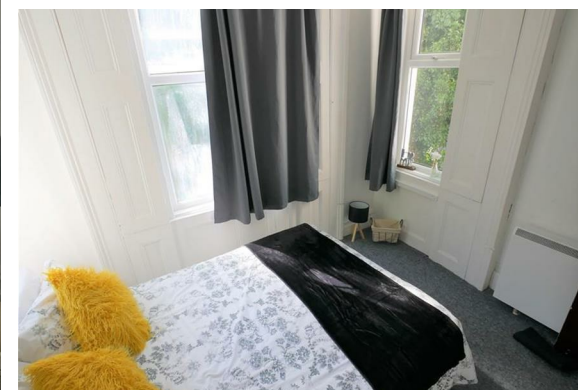
Double room to let in Bournemouth Town centre.

Key Features:

- All bills included
- Fully furnished
- Shared cooking and laundry facilities
- Two Full bathroom to share
- Internet WIFI Access
- Car Park Subject to permit

EPC Rate: D

BCP Council Tax: B





Floor Plan



Viewing

Please contact our HMO's Office on
if you wish to arrange a viewing appointment for this property or require further information.

Area Map



Energy Efficiency Graph



These particulars, whilst believed to be accurate are set out as a general outline only for guidance and do not constitute any part of an offer or contract. Intending purchasers should not rely on them as statements of representation of fact, but must satisfy themselves by inspection or otherwise as to their accuracy. No person in this firm's employment has the authority to make or give any representation or warranty in respect of the property.