



Ashmore Road, Woolwich, London SE18 4BY



Ashmore Road, London, SE18

Leasehold (232 years remaining)

A heritage conversion apartment within The Royal Academy development in Woolwich, offering contemporary living within historically significant surroundings. Ideally positioned for Elizabeth line connectivity and Woolwich Common

Key Features

- 1 Bedroom, 1 Bathroom
 - No chain
 - Light and bright throughout
 - Council Tax: **B**
 - Service Charge: **£3,428 P/A**
 - Ground Rent: **£300 P/A**
 - Excellent transport links
 - EPC: **B**
-

Situated within the prestigious Royal Academy development in Woolwich, this one-bedroom apartment offers a rare opportunity to own a piece of London's military heritage. The Royal Academy played a pivotal role in the British Empire, training generations of military leaders and mapping engineers, and today these heritage-listed buildings have been thoughtfully converted into modern residential homes while retaining their architectural significance and character.

This ground floor apartment provides contemporary living spaces with modern specifications throughout. The development setting offers residents the unique distinction of living within buildings steeped in history, creating a sense of place that few modern developments can match. The conversion has been carefully executed to blend period features with the conveniences expected of modern London living.

This apartment represents an accessible entry point into London property ownership, offering the perfect combination of heritage character, modern convenience, and excellent connectivity.









Ashmore Road, SE18

Approximate Gross Internal Area = 41.7 sq m / 449.3 sq ft

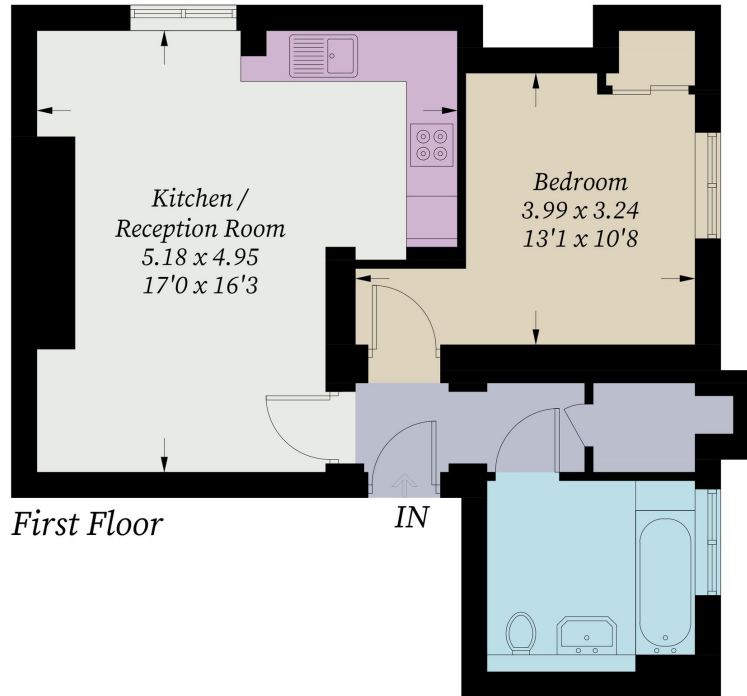


Illustration for identification purposes only, measurements are approximate, not to scale. Fourlabs.co © (ID1305634)