



Rotherwick Road, Hampstead Garden Suburb, NW11
Guide Price: £1,500,00

moreland 





Exclusive listing on this delightful four-bedroom, two-bathroom semi-detached house arranged over three floors, extending to 1668sqm / 155 m².

Built in 1910 under the supervision of Bunnie & Makins Architects. Located within the Suburb conservation area.

Comprising a reception hallway with a guest cloakroom, two formal reception rooms, one with direct access out to the garden and a fitted kitchen with access out to the side passageway.

On the first floor, there are two double bedrooms, the principal has an ensuite shower room plus an additional large single bedroom.

On the top floor is another large double bedroom with an ensuite shower room.

Outside, there is a mature 75' rear garden which has a gated side passageway to the front garden offering off-street parking.

Conveniently located within minutes' walk of Golders Green tube station and a variety of shopping facilities, restaurants and coffee shops on Golders Green Road. Also, within a short walk of the Heath extension.

Regular bus/ coach routes into and out of central London and major Airports are easily accessible.

This is a chain-free transaction.



Size - 1668 sqft / 155 sqm



4 Bedrooms

Tenure - Freehold



2 Bathroom

Council - Barnet

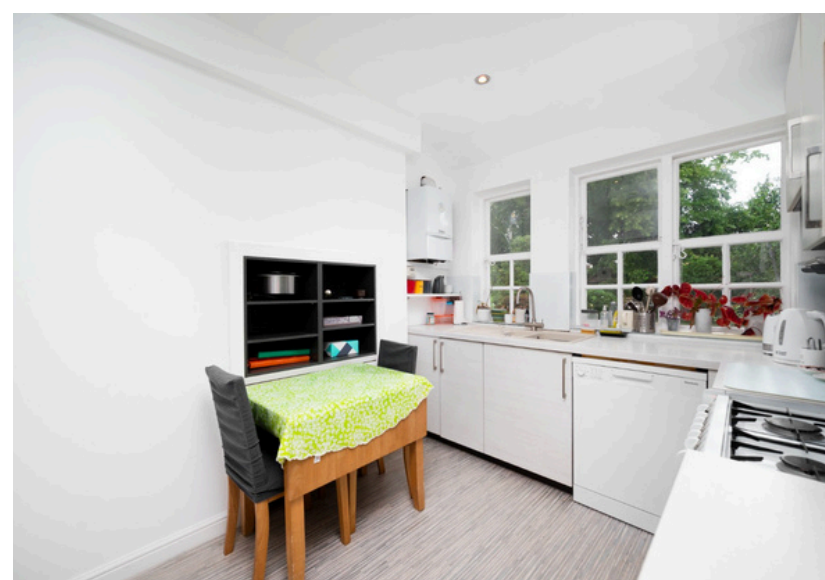


1 Reception

Tax Band - E



Drive

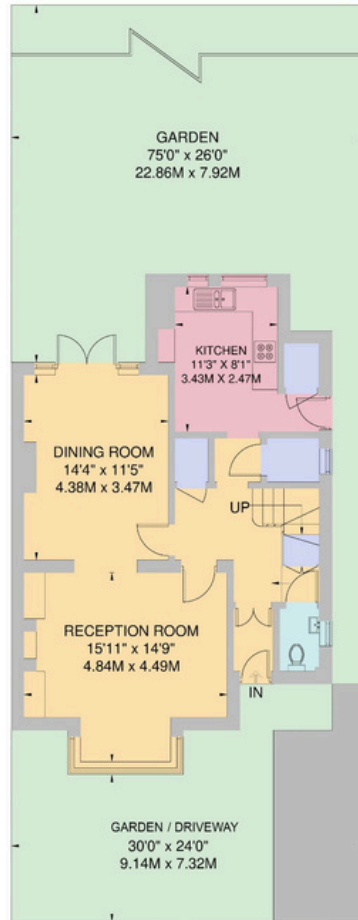
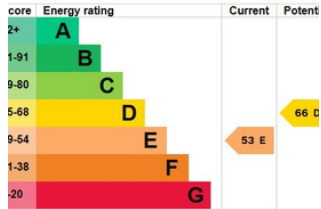




Rotherwick Road, Hampstead Garden Suburb, NW11

Approximate Gross Internal Area

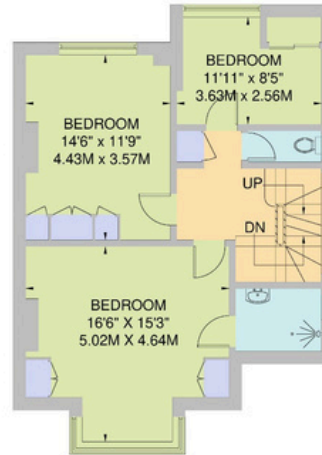
155.0 sq m / 1668 sq ft



GROUND FLOOR
63.6 sq m / 684 sq ft



SECOND FLOOR
31.1 sq m / 335 sq ft



FIRST FLOOR
60.3 sq m / 649 sq ft

moreland

At Moreland, our mission is to deliver a trusted, professional, and personalised property service by combining deep local expertise with clear communication and a genuine commitment to our clients' best interests.

We strive to make every property journey smooth, transparent, and successful, building long-term relationships through integrity, knowledge, and exceptional customer care.

020 8381 4970

info@morelandstateagents.co.uk

Moreland Estates Ltd is a company registered in England and Wales with company number 03663497

Trading Address is: 903 - 905 Finchley Road, Golders Green, London, NW11 7PE

VAT Registration Number: GB 701 775 936

Registered Office is: Unit 8 Alpha Business Park, Travellers Close, Welham Green, Hertfordshire, AL9 7NT

