



**2 Bignor Close,**  
Guide Price £330,000

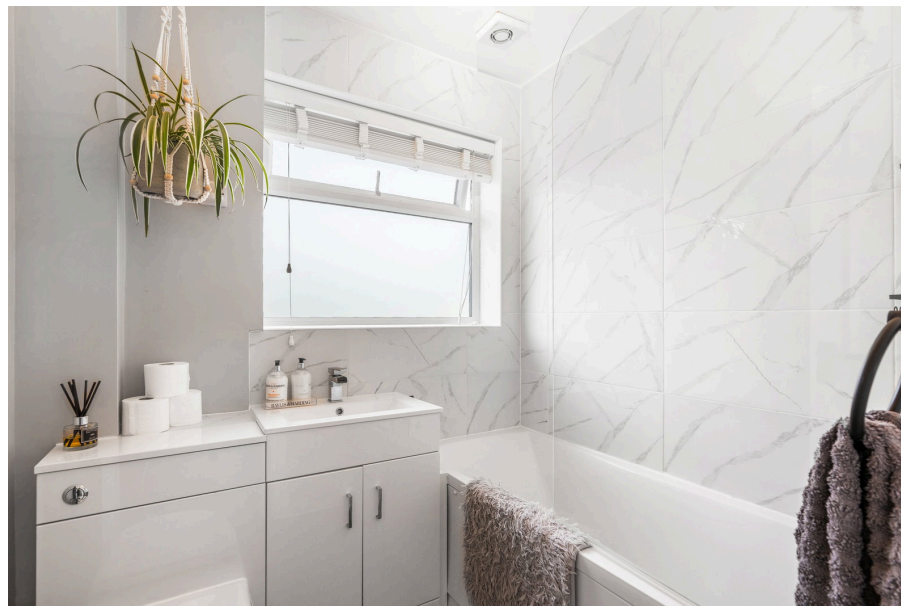
 2  1  1



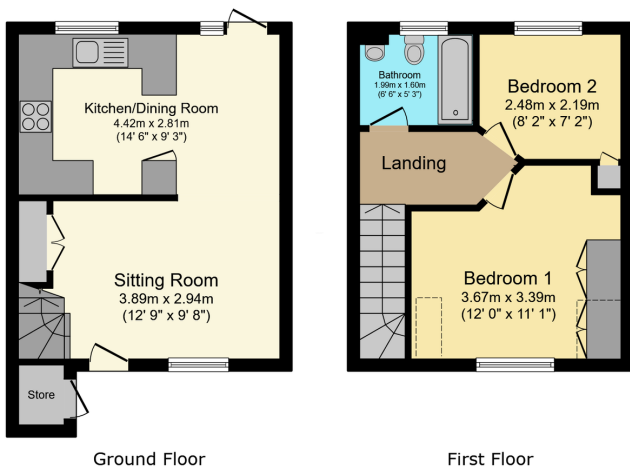
- Virtual Tour Available
- 2 Bedroom Terraced House
- 2 Allocated Car Spaces
- Excellent Transport Links
- Close to Littlehaven Train Station
- Desirable Area Of North Horsham
- South Facing Rear Garden
- Beautifully Presented



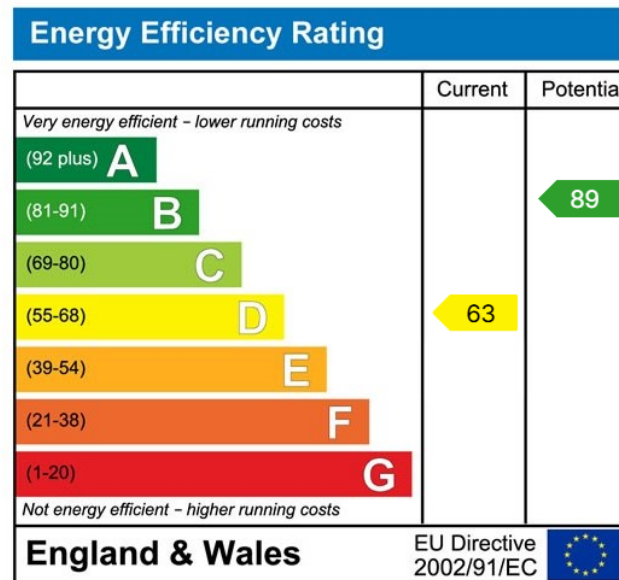
Clickmymove.com are proud to present this beautifully presented two-bedroom terraced house, situated in a quiet and desirable area of North Horsham within easy walking distance of Littlehaven mainline railway station. The property offers a spacious sitting room, an open-plan kitchen/dining room, a modern bathroom, a delightful south-facing rear garden extending to over 35 feet, and two allocated parking spaces with visitor parking.



Bignor Close, Horsham, RH12 5JQ



Total floor area: 52.4 sq.m. (564 sq.ft.)  
This floor plan is for illustrative purposes only. It is not drawn to scale. Any measurements, floor areas (including any total floor area), openings and orientations are approximate. No details are guaranteed, they cannot be relied upon for any purpose and do not form any part of any agreement. No liability is taken for any error, omission or misstatement. A party must rely upon its own inspection(s). Powered by www.propertybox.co.uk



01403 586012 - Horsham office  
 01293 365031 - Crawley office

9 Church Road, Horsham, RH12 4NN  
 help@Clickmymove.com

