



Loveridge Court
Bristol BS36 2NX

Price:
£1,675 PCM

Property Features

- End Terrace Town House
- Four Bedrooms
- Kitchen/Breakfast Room
- Master Suite with Ensuite Bathroom & Dressing Room
- Lounge / Dining Room
- Garage & Parking
- Available Immediately
- Popular Location
- Newly Decorated Throughout
- New Carpets To Be Fitted

Full Description

ENTRANCE HALL

UTILITY ROOM

5'9" x 5'2"

CLOAKROOM

LOUNGE/DINER

19'11" x 11'0"

KITCHEN/BREAKFAST ROOM

11'9" x 9'0"

FIRST FLOOR LANDING

BEDROOM 2

11'7" x 9'6"

BEDROOM 3

11'9" x 9'6"

BEDROOM 4

9'4" x 8'7"

BATHROOM

SECOND FLOOR LANDING

BEDROOM 1

15'3" x 12'6"

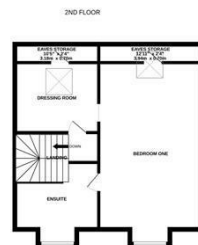
ENSUITE SHOWER ROOM

DRESSING ROOM

9'8" x 4'3"

FRONT & REAR GARDEN

GARAGE & PARKING



Measurements are approximate. Not to scale. Illustrative purposes only. Made with Metron 02020

4 Flaxpits Lane
Winterbourne
Bristol
BS36 1JX

www.aj-homes.co.uk
info@aj-homes.co.uk
01454 252140

Agents Note: Whilst every care has been taken to prepare these sales particulars, they are for guidance purposes only. All measurements are approximate are for general guidance purposes only and whilst every care has been taken to ensure their accuracy, they should not be relied upon and potential buyers are advised to recheck the measurements