



**Stanway Road, Shirley Solihull B90 3JF**

**welcome to**

## **Stanway Road, Shirley Solihull**

**\*\* EXTENDED SEMI-DETACHED FAMILY HOME \*\* TUDOR GRANGE CATCHMENT \*\* TWO RECEPTION ROOMS \*\* DRIVEWAY \*\* GARAGE \*\* GENEROUS SIZED REAR GARDEN \*\* LOG BURNER FEATURE \*\* GARDEN OFFICE \*\* EXCELLENT LOCATION \*\* GOOD TRANSPORT LINKS \*\***

### **Agent Note**

Council Tax Band is D.

### **Entrance Porch**

Double glazed windows and UPVC door.

### **Cloakroom**

WC, double glazed window to rear, ceiling light point, sink and radiator.

### **Lounge**

Double glazed window to rear, double glazed french doors to rear, ceiling light point and log burner.

### **Dining Room**

Double glazed bay window to front, ceiling light point and radiator.

### **Kitchen**

Double glazed window to rear, two ceiling light points, integrated hob, cupboards, worktops, sink and pantry.

### **Utility Room**

Two velux windows, double glazed UPVC door to rear, sink and radiator.

### **Landing**

Loft hatch.

### **Bedroom One**

Double glazed bay window to front, ceiling light point and radiator.

### **Bedroom Two**

Double glazed window to rear, ceiling light point and radiator.

### **Bedroom Three**

Double glazed window to front, ceiling light point and radiator.

### **Bathroom**

Double glazed window to rear, double glazed window to side, w/c, bath, sink, ceiling light point and radiator.

### **Rear Garden**

Patio laid to lawn and garden office.

### **Parking**

Driveway to front.

### **Outbuildings**

Garage - ceiling light point. Office in garden, el-velux window, electric heater and double-glazed window.





***view this property online*** [shipways.co.uk/Property/SLY112215](https://shipways.co.uk/Property/SLY112215)



welcome to

## Stanway Road, Shirley Solihull

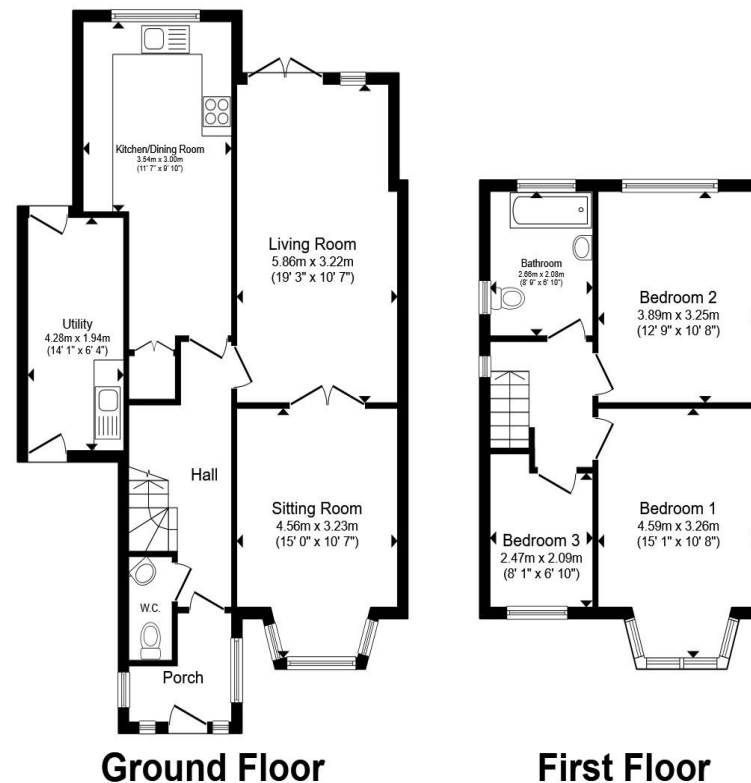
- EXTENDED
- TWO RECEPTION ROOMS
- GARAGE
- TUDOR GRANGE CATCHMENT
- GENEROUS GARDEN WITH OFFICE ROOM

Tenure: Freehold EPC Rating: D

Council Tax Band: D

offers over

**£410,000**



Total floor area 115.5 m<sup>2</sup> (1,244 sq.ft.) approx

This floor plan is for illustrative purposes only. It is not drawn to scale. Any measurements, floor areas (including any total floor area), openings and orientation are approximate. No details are guaranteed, they cannot be relied upon for any purpose and they do not form part of any agreement. No liability is taken for any error, omission or misstatement. A party must rely upon its own inspection(s). Powered by [www.propertybox.io](http://www.propertybox.io)



view this property online [shipways.co.uk/Property/SLY112215](http://shipways.co.uk/Property/SLY112215)



Property Ref:  
SLY112215 - 0005

1. MONEY LAUNDERING REGULATIONS Intending purchasers will be asked to produce identification documentation at a later stage and we would ask for your co-operation in order that there is no delay in agreeing the sale. 2. These particulars do not constitute part or all of an offer or contract. 3. The measurements indicated are supplied for guidance only and as such must be considered incorrect. Potential buyers are advised to recheck measurements before committing to any expense. 4. We have not tested any apparatus, equipment, fixtures or services and it is in the buyers interest to check the working condition of any appliances. 5. Where an EPC, or a Home Report (Scotland only) is held for this property, it is available for inspection at the branch by appointment. If you require a printed version of a Home Report, you will need to pay a reasonable production charge reflecting printing and other costs. 6. We are not able to offer an opinion either written or verbal on the content of these reports and this must be obtained from your legal representative. 7. Whilst we take care in preparing these reports, a buyer should ensure that his/her legal representative confirms as soon as possible all matters relating to title including the extent and boundaries of the property and other important matters before exchange of contracts.



**0121 744 4595**



[shirley@shipways.co.uk](mailto:shirley@shipways.co.uk)



208 Stratford Road, Shirley, SOLIHULL, West Midlands, B90 3AG



[shipways.co.uk](http://shipways.co.uk)