



Pavilion Terrace, W12

£795,000

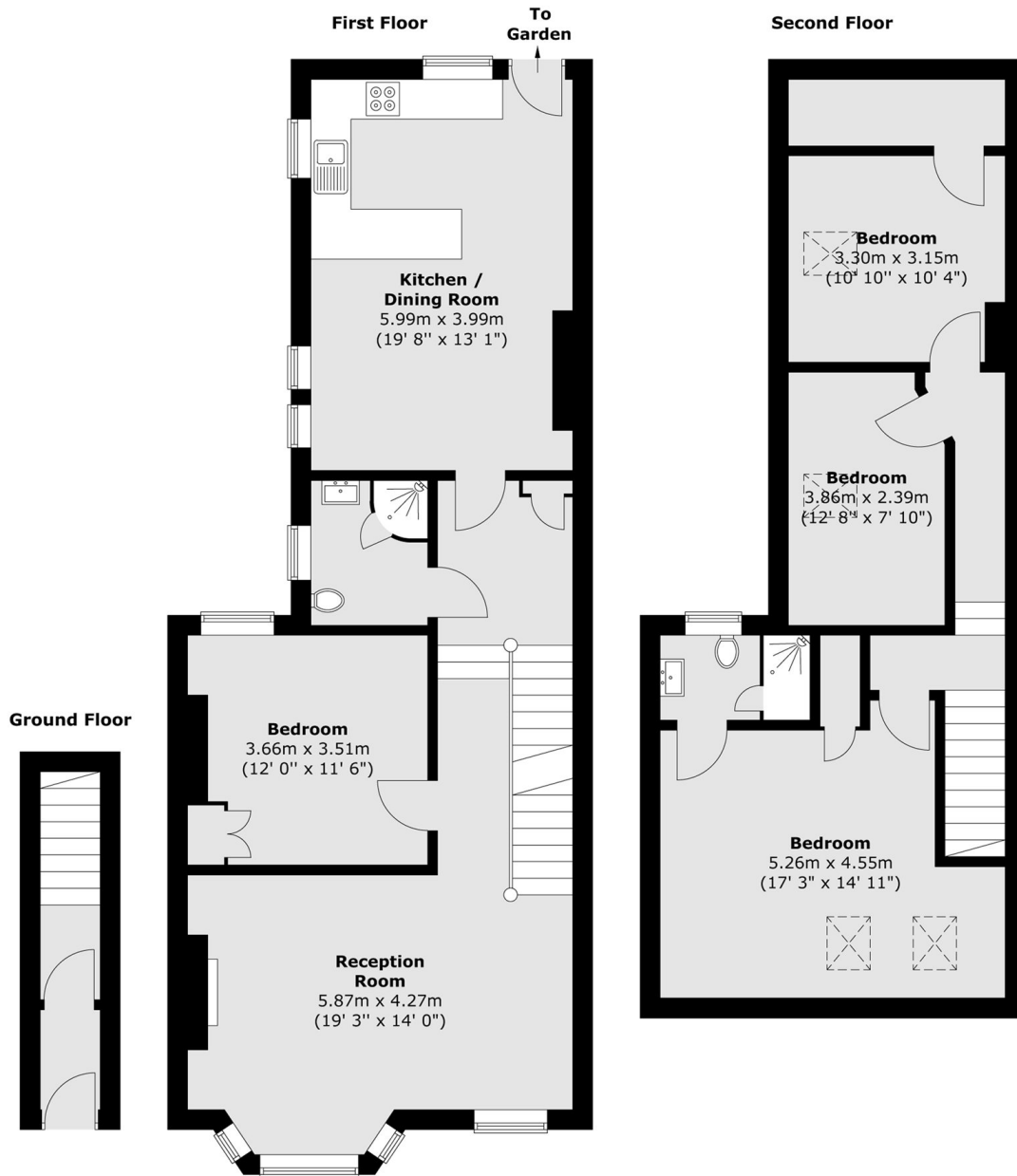
A spacious split-level four-bedroom maisonette extending to approximately 1,500 sq ft and offered to the market with no onward chain. The property comprises four well-proportioned double bedrooms, providing generous and flexible living accommodation. A beautiful kitchen and an inviting living area, both enhanced by wood-burning stoves, form a warm and characterful heart to the home. Further benefits include a private garden, making this an ideal choice for families or buyers seeking space and charm.

Pavilion Terrace is located in close proximity to Notting Hill. It is moments away from the historic Television Centre, White City House and the abundance of shops and amenities in Westfield Shopping Centre as well as the bars and restaurants on Portobello Road. There are fantastic transport links with easy access into central London, the West End and The City.

Features

- Share of Freehold
- Private Garden
- Two Wood Burners
- No Onward Chain
- Residents Parking
- Westfields Shopping Centre

Pavilion Terrace, London, W12



Total area (approx.) : 139.8 sq. m (1505 sq. ft)