



- A mature terraced property which appreciates far reaching valley views
- Entrance porch, entrance hallway, handy cloakroom, storage cupboard
- Lounge to rear with a large window appreciating the valley views
- Attractive kitchen breakfast room with window to front
- Three bedrooms and family bathroom on the first floor
- Fully enclosed lawn garden to rear adjoining open fields



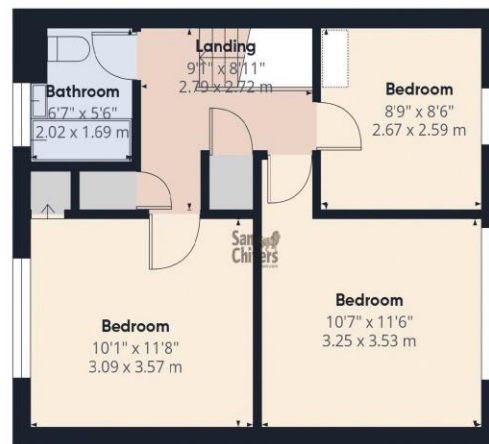
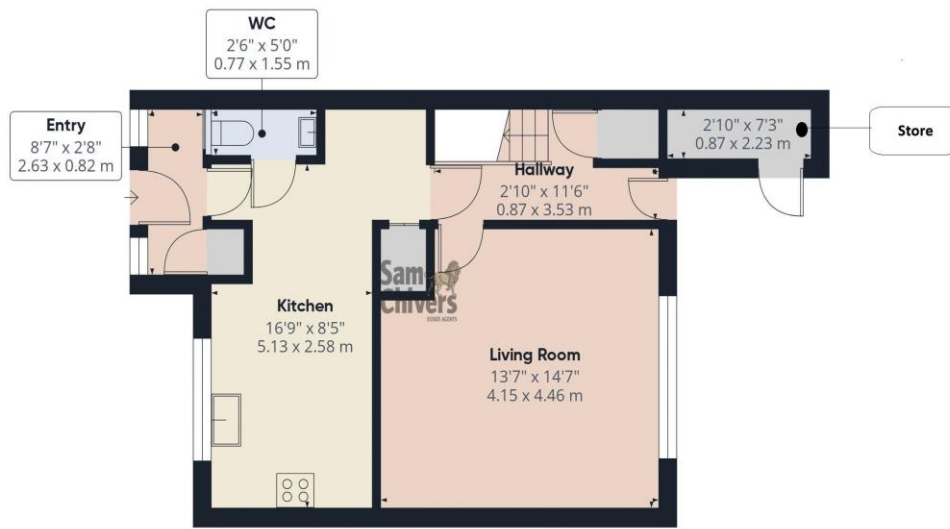
"A three-bedroom terraced property with a fully enclosed rear garden backing onto open fields, panoramic valley views and is just a ten-minute walk to St Marys Primary School and Writhlington Secondary School, making for a good family home".

The accommodation comprises entrance porch opening into the entrance hallway. From the hallway there is an attractive open plan kitchen which has been recently fitted and a handy ground floor w.c. The lounge enjoys a large window which overlooks the garden and appreciate a fine view. Also in the hallway is a useful storage cupboard and door opening onto the rear garden. On the first floor are three bedrooms and family bathroom with shower over bath. Gas central heating and double glazing.

Outside to front is unrestricted on road parking and an enclosed tiered garden to front. The garden has a gravelled patio area, lawn and a useful block-built storage shed.

Tenure: Freehold. **Council Tax Band:** B.





Approximate total area⁽¹⁾
907 ft²
84.5 m²

(1) Excluding balconies and terraces

Calculations reference the RICS IPMS 3C standard. Measurements are approximate and not to scale. This floor plan is intended for illustration only.

GIRAFFE360



Find us online!



www.samchiversproperty.co.uk



Facebook: Sam Chivers Estate Agents



Instagram: @samchiversestateagents

rightmove Zoopla

Score	Energy rating	Current	Potential
92+	A		
81-91	B		
69-80	C	73 C	78 C
55-68	D		
39-54	E		
21-38	F		
1-20	G		

Sam Chivers Estate Agents can also provide mortgage and conveyancing recommendations should you require such a service. Please contact our office on:

01761 411020 or email us at sales@samchiversproperty.co.uk

These sales particulars provide an approximate guide and form no part of a contract. It is the purchaser's responsibility to satisfy themselves that the property has been accurately described and that all fixtures and apparatus are functioning correctly. Your home may be at risk if you do not keep up repayments secured against it.