



## Cunnington Street, W4

£500,000

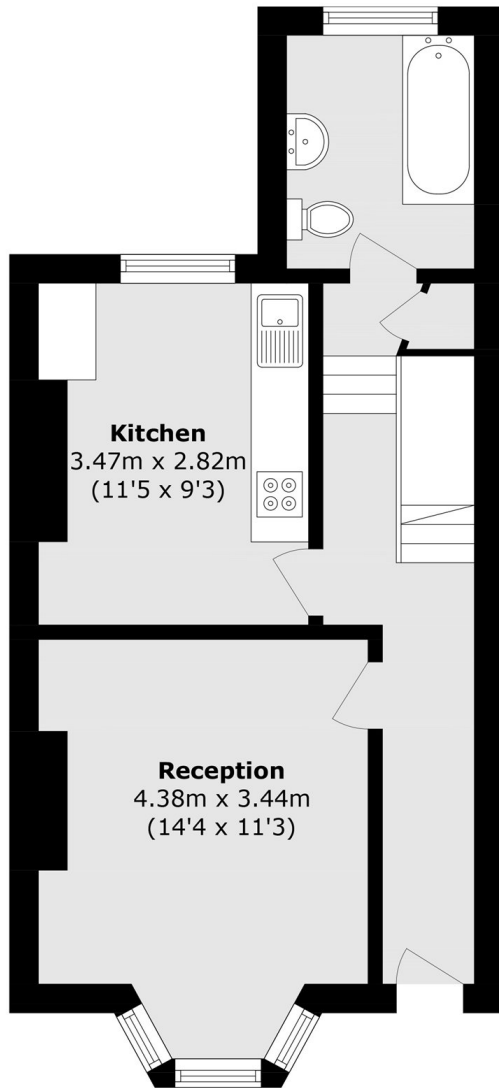
A two bedroom conversion flat. With share of freehold, potential to extend into the loft (STPP) and no onward chain.

Cunnington Street is moments from Chiswick Park station, near Turnham Green, Acton Green Common, and a short walk from Chiswick High Road's shops, bars, and restaurants.

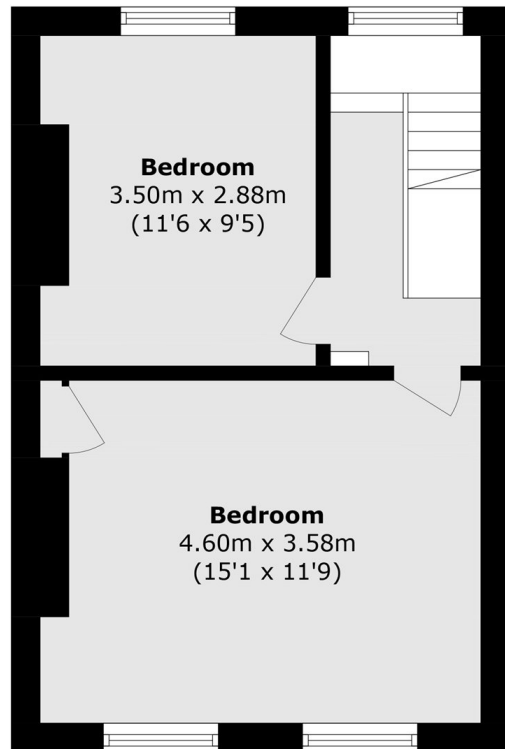
### Features

Split-Level  
Two Double Bedrooms  
Share Of Freehold  
Potential To Extend (STPP)  
Close To Transport  
No Onward Chain

Cunnington Street,  
London, W4



**Ground Floor**



**First Floor**

Total area (approx.): 71.3 sq. m (767.4 sq. ft)