



Ostade Road, SW2

£2,250 Per calendar month

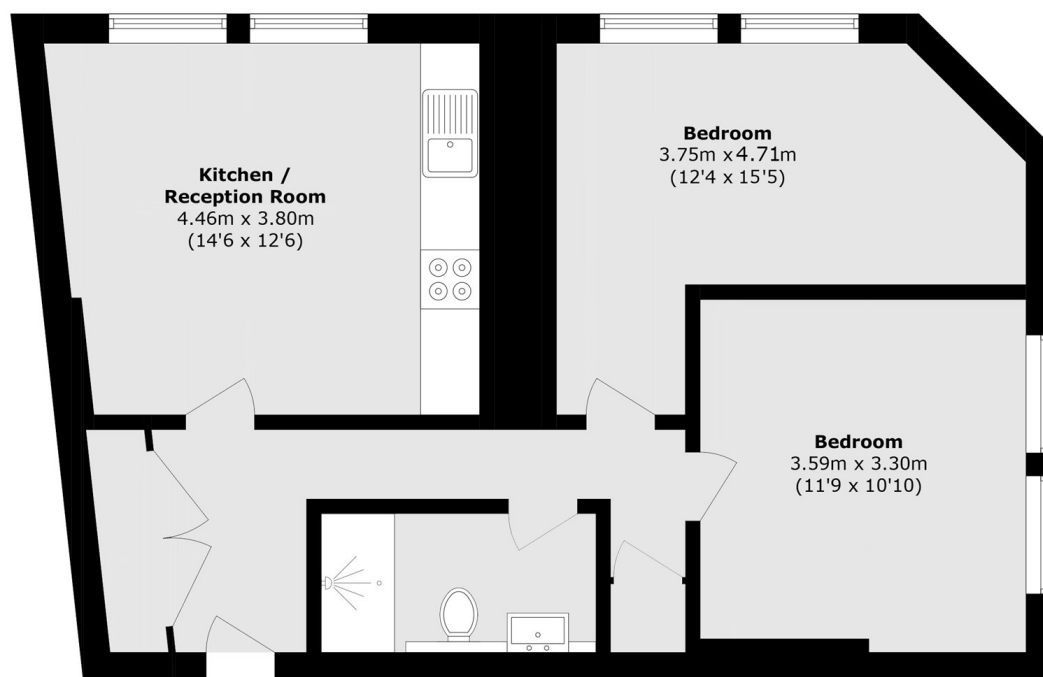
Set on the first floor, this two bedroom property offers a modern open plan reception room, a stylish kitchen, one bathroom, high ceilings, wooden flooring and neutral interior throughout.

A residential street located between Brixton Hill and Streatham Hill. With access to amenities, including the green open spaces of Brockwell Park and Brixton station.

Features

- Two Double Bedrooms
- First Floor Flat
- Modern Specification
- Open Plan Reception
- Wooden Flooring
- Ideal Location

Ostade Road, London, SW2



Total area (approx.): 59.0 sq. m (635.1 sq. ft)