



## 18 TALATON CLOSE (F577)

WOLVERHAMPTON, WV9 5LS

£899 PER CALENDAR

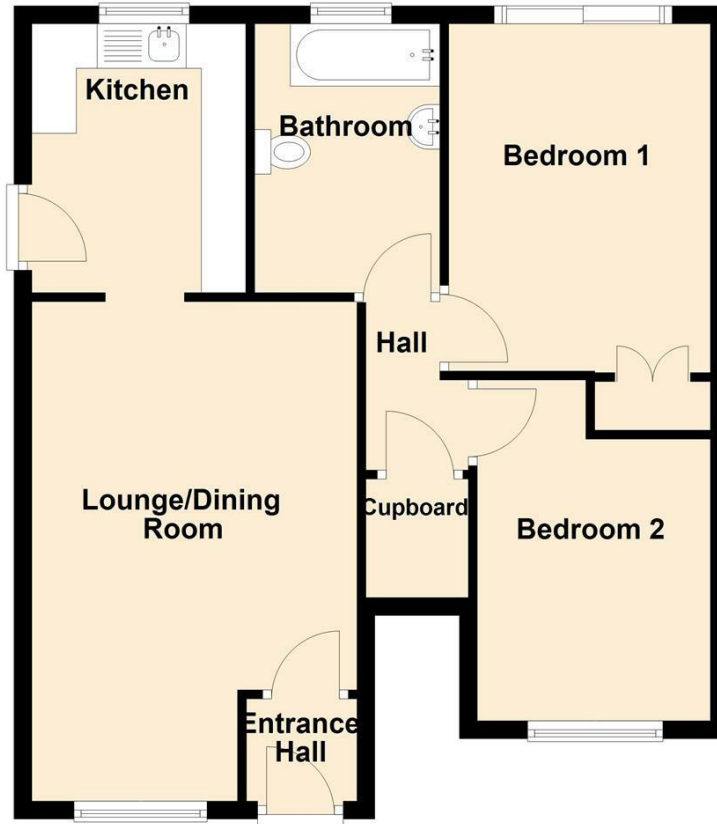
BEFORE A VIEWING CAN BE BOOKED PLEASE FILL OUT OUR PREQUALIFICATION FORM ON LINE

Nicely Presented Ground Floor Flat on this Modern development North of Wolverhampton. Accommodation comprises of:- Hall, Living Room, Two Double Bedrooms one with built in wardrobes and patio windows leading onto the back patio area, Modern Kitchen, and Bathroom Gardens to the Front and the Rear, Gas Central Heating, Upvc Double Glazed Windows. UNFURNISHED. NO SMOKERS

HOLDING DEPOSIT -£205 DEPOSIT - £1037 EPC - D COUNCIL TAX - A (Wolverhampton)



### Ground Floor



Energy Efficiency Rating		Current	Potential
Very energy efficient - lower running costs			
(92 plus) A			
(81-91) B			
(69-80) C			
(55-68) D		68	77
(39-54) E			
(21-38) F			
(1-20) G			
Not energy efficient - higher running costs			
England & Wales		EU Directive 2002/91/EC	



Sanders, Wright & Freeman -  
 Lettings  
 13 Waterloo Road  
 Wolverhampton  
 West Midlands  
 WV1 4DJ

01902575555  
[enquiries@swfestateagents.co.uk](mailto:enquiries@swfestateagents.co.uk)  
<https://www.swfestateagents.co.uk>

Agents Note: Whilst every care has been taken to prepare these particulars, they are for guidance purposes only. All measurements are approximate and are for general guidance purposes only and whilst every care has been taken to ensure their accuracy, they should not be relied upon and potential buyers/tenants are advised to recheck the measurements