

11 Village Centre, £2,107 pcm*

(Other charges apply)

RICHMOND
VILLAGES

Part of Bupa

2F

1



1



EPC - B



1 bedroom second floor apartment

A well-presented one-bedroom apartment, situated within the main village building and enjoying pleasant views over the Worcestershire countryside from its private balcony. The apartment is conveniently located close to the excellent on-site facilities, including a restaurant, cinema, reception area, library, Wellness Spa, and landscaped gardens and terraces.

Specification

- Generously proportioned living room with underfloor heating and electric flame-effect fireplace with marble decorative surround.
- Fitted kitchenette with a range of wall and base units, stainless steel sink and drainer, integrated fridge with freezer-compartment, and ceiling downlights.
- Spacious bedroom with multiple power sockets.
- Modern en-suite shower room comprising a shower, WC, and washbasin set within a fully fitted vanity unit.
- Private balcony with beautiful views over the surrounding countryside.
- TV and satellite points*.
- Well stocked flower borders and lawns maintained by the Village Gardeners.
- Allocated parking space for one car.



*Satellite subscription not included.

Important Notice: These particulars are intended to give a fair and substantially correct overall description. Other fees and charges apply, please contact the Village Advisers for further details. Properties are sold on a 125-year lease, which commenced on 2019.

01386 862 222

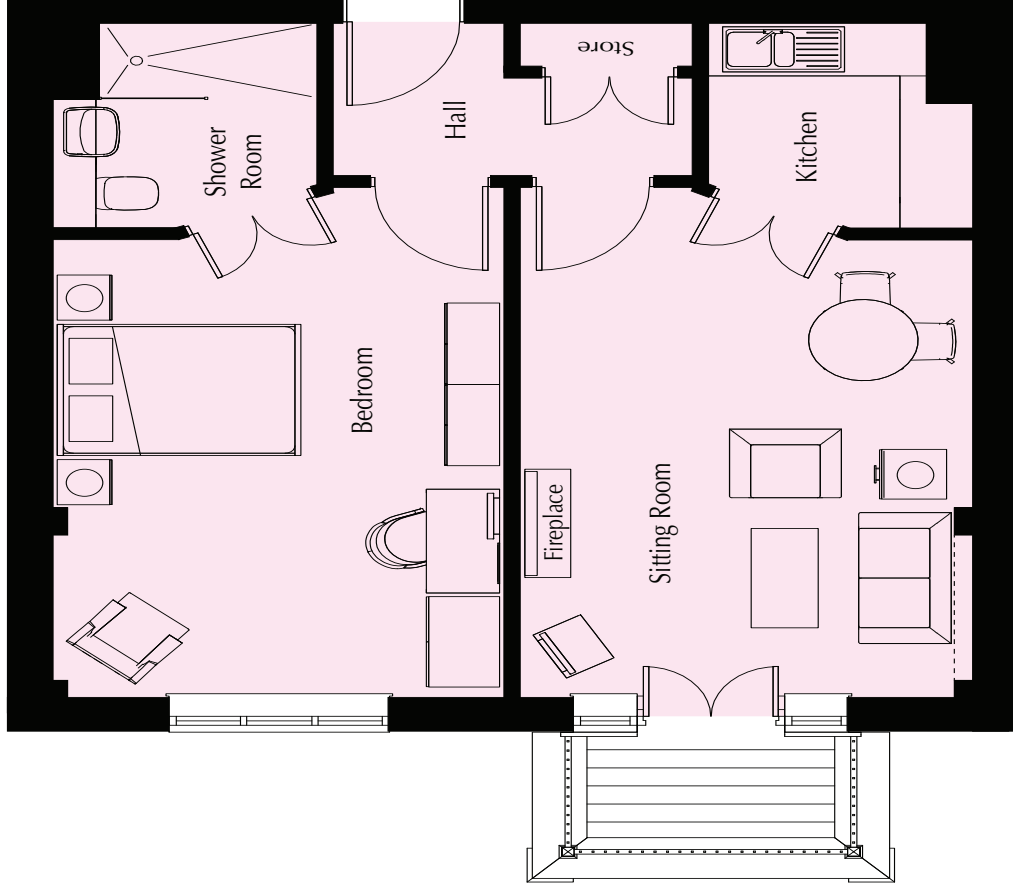
woodnorton@richmond-villages.com

Richmond Villages Wood Norton,
Evesham Road, Wood Norton, Evesham, Worcestershire WR11 4TY

11 Village Centre

Second Floor

- Kitchen**
2250mm x 2130mm
7'5" x 7'
- Living Room**
5640mm x 3732mm
18'6" x 12'3"
- Bedroom**
5640mm x 3666mm
18'16" x 12'
- Shower Room**
2300mm x 2180mm
7'7" x 7'2"



These particulars are intended to give a fair and substantially correct overall description. Measurements have been taken at 1500mm skirting height. All dimensions are approximate. Bedroom measurements include the wardrobe if applicable. Room measurements include bay windows if applicable. Furniture layout is to give an indicative impression. Although all efforts have been made to ensure its accuracy at time of print dimensions, fixtures, fittings, finishes and specifications are subject to change without notice. The properties are sold unfurnished.

