



ALEX BRITEZ CABRAL

exp[®] uk

@ alex.cabral@exp.uk.com

alexbritezcabral.exp.uk.com

07774 123 444

Halton Road, London, N1

Guide Price £550,000 - £600,000

2 1

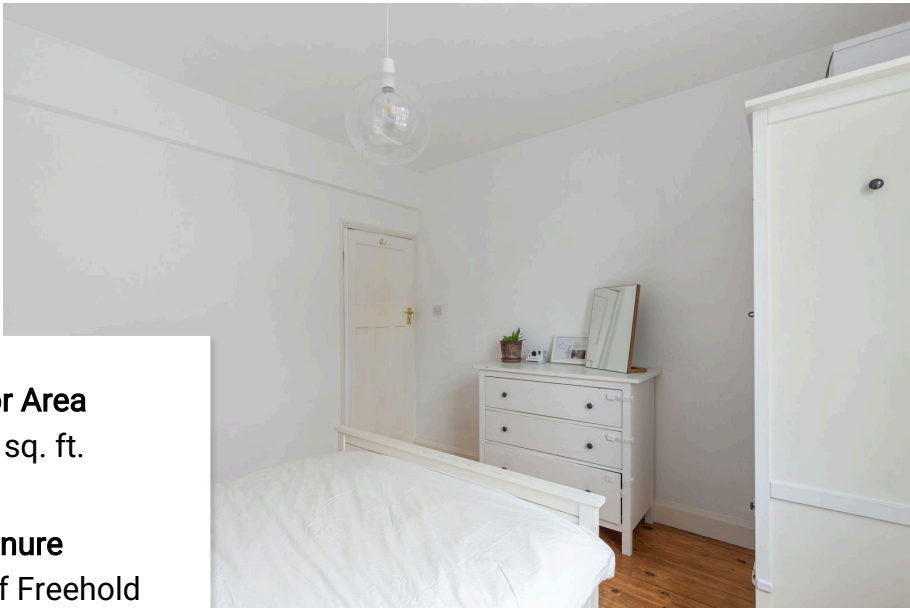


QUOTE AB0697

Guide Price - £550,000 - £600,000

Offering almost 500 Sq Ft of living space, this is an incredibly well finished two bedroom flat situated in the heart of Islington. Lovingly modernised and improved by the current owners, this property arrives to market in turn key condition, and would be ideal for first time buyers or investors alike. Essex Road Station (Overground) is just minutes away, while Highbury & Islington (Tube & Overground) is also close by. Further transport links are also offer by Angel Station (Tube) which is also easily accessible. The many local amenities of Essex Road and Upper Street are less than a mile away, as are the green open spaces of Caledonian Park.





Floor Area
481 sq. ft.

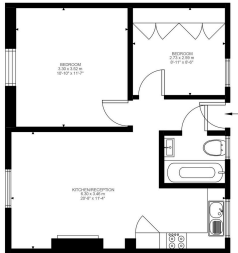
Tenure
Share Of Freehold

Service Charge
£2441.64 per annum

Ground Rent
£0 per annum



Halton Road, N1
2 Bedroom Flat
Approximate internal area: 481 sqft 45 sqm



First Floor

While we do try our very best, floor plans are produced as a guide only and we take no responsibility for the precise accuracy with which any property is represented.

